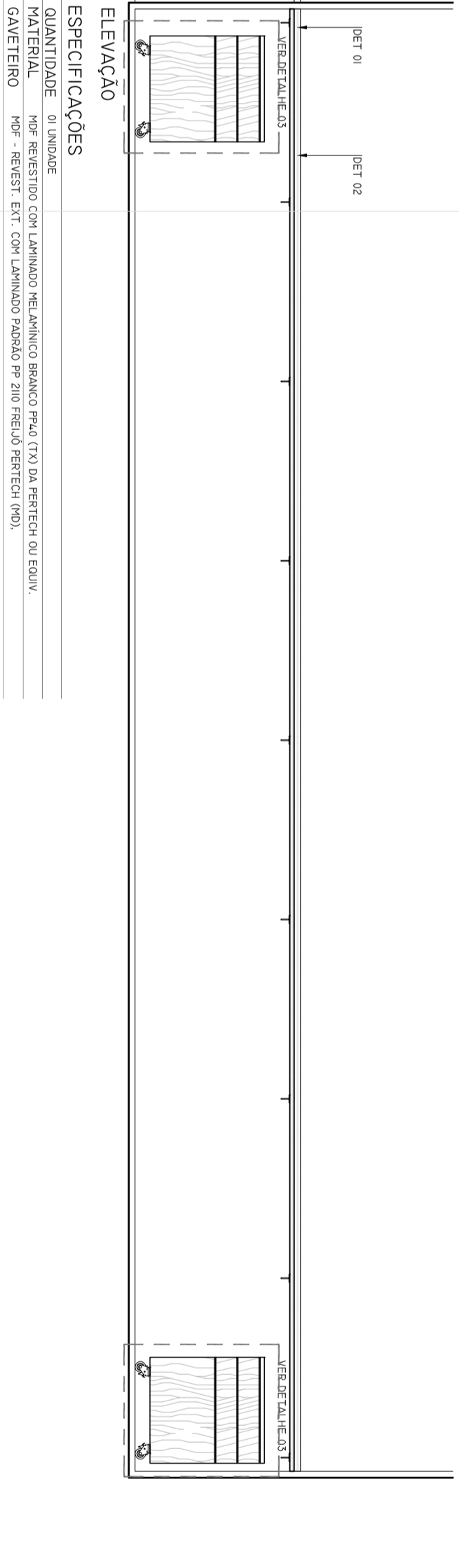
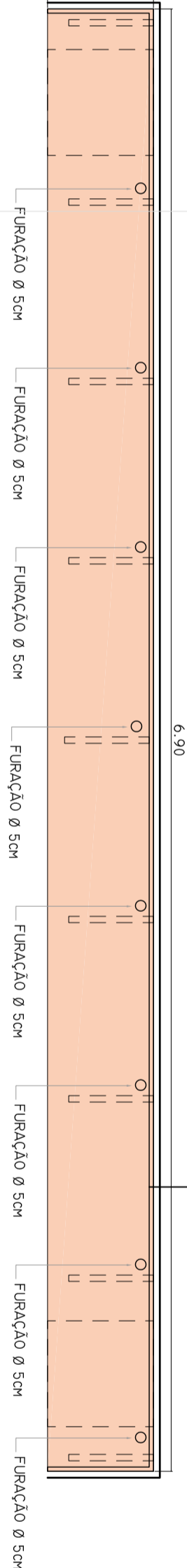
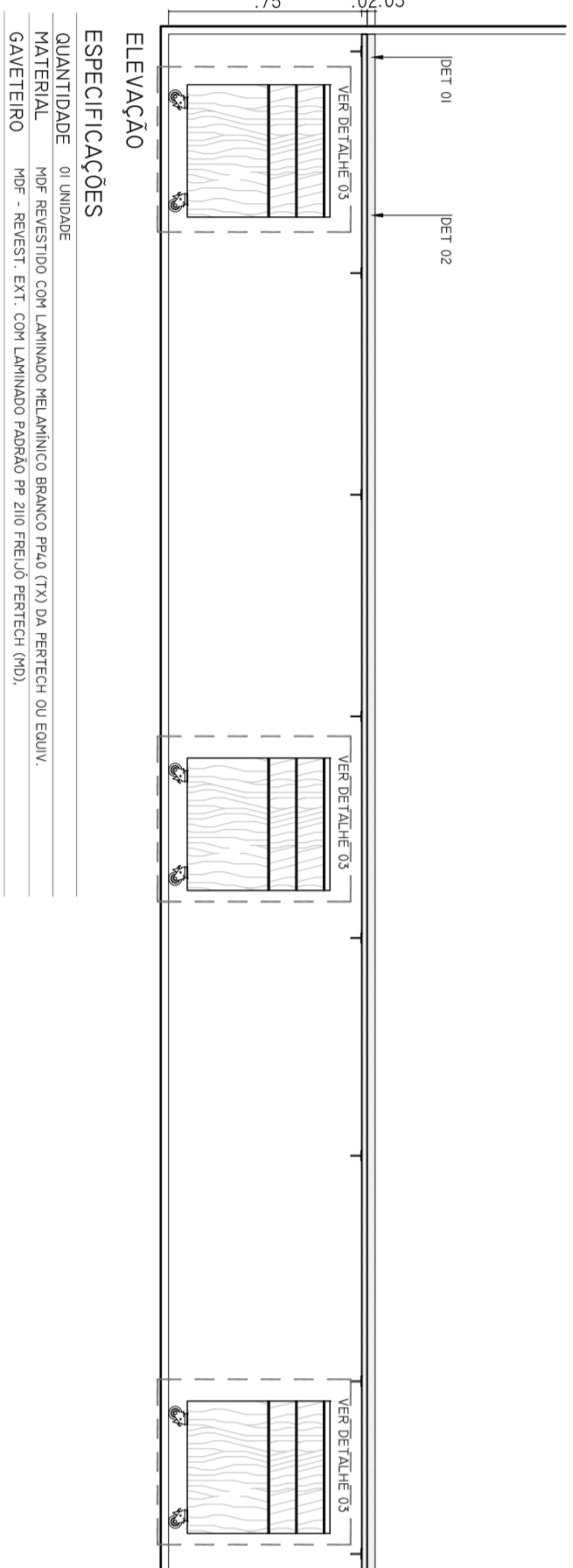
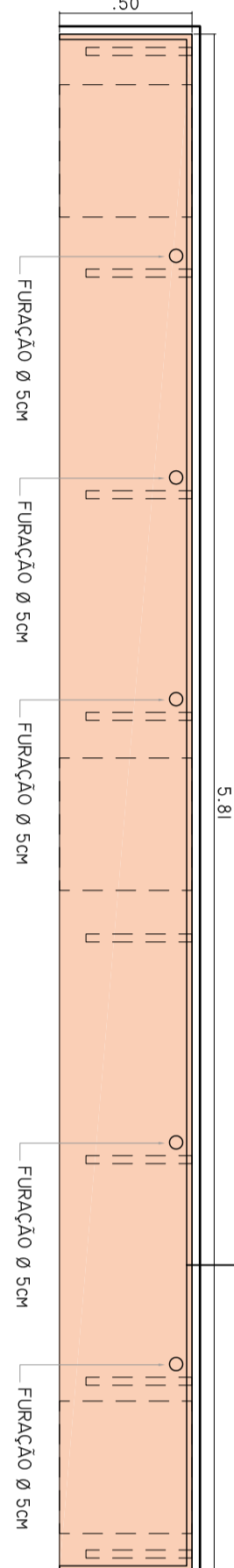
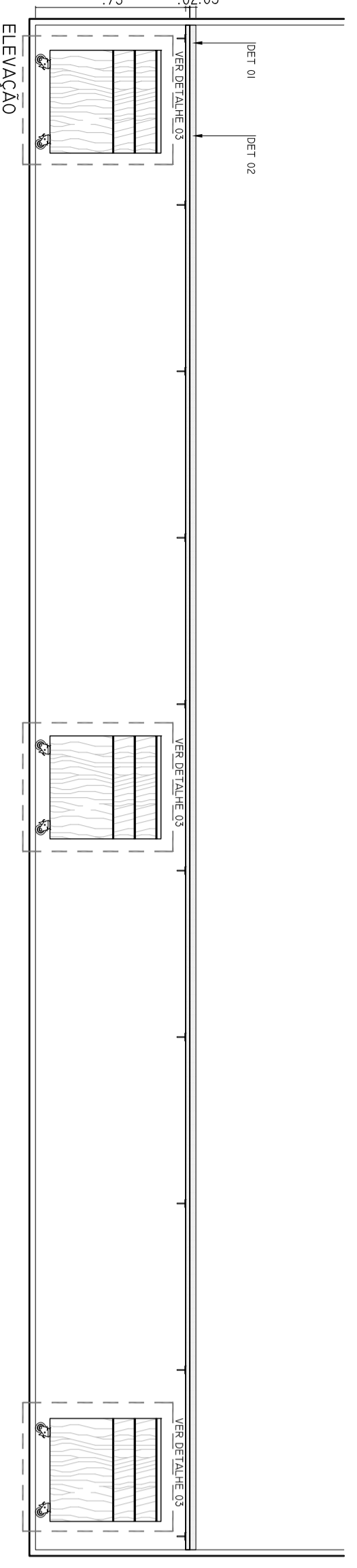
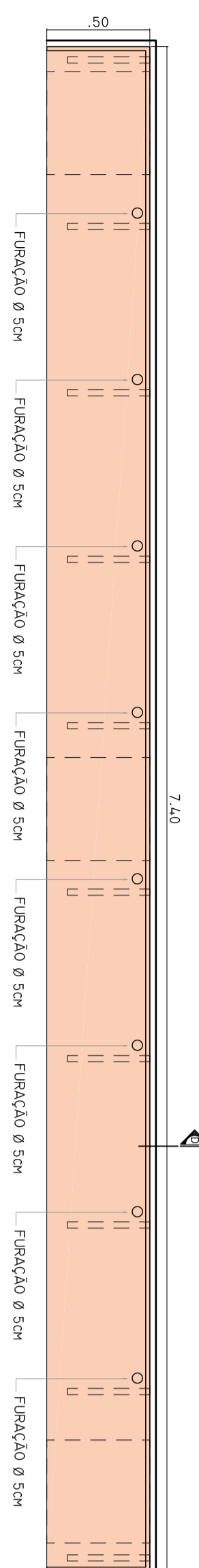
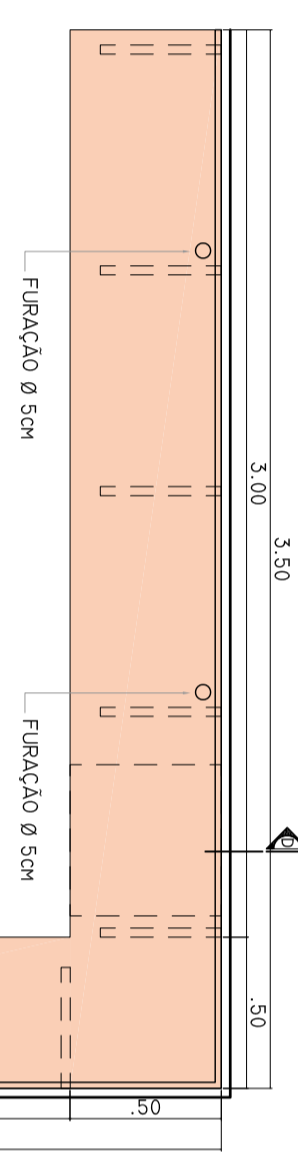


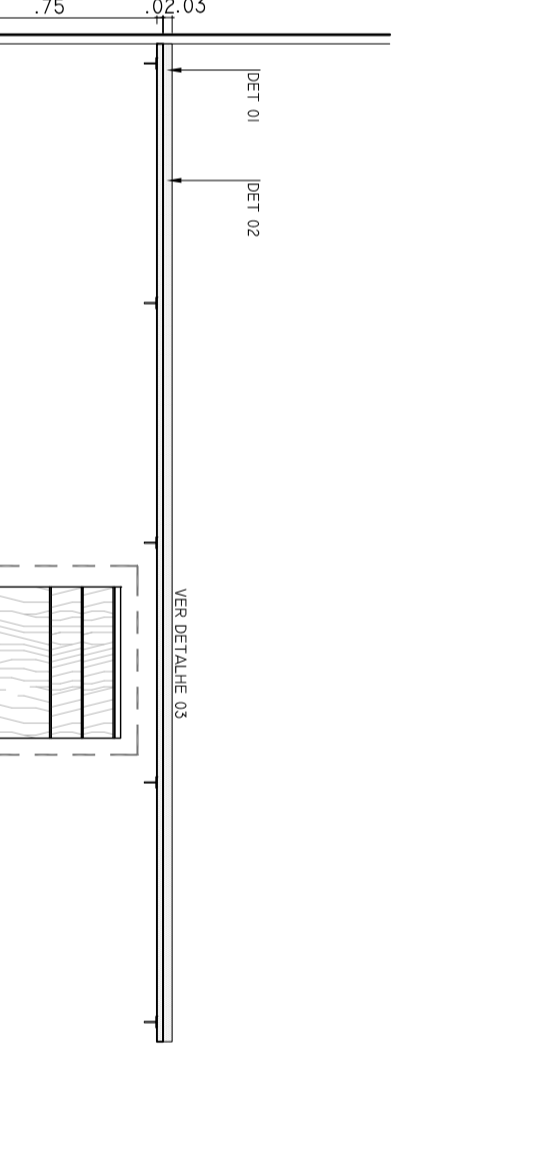
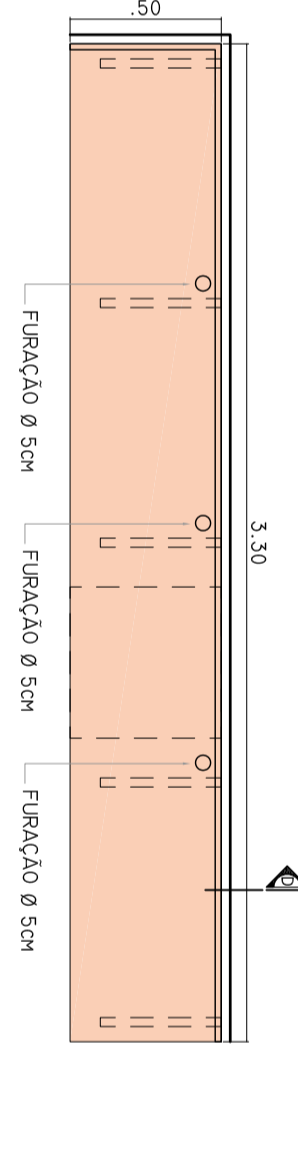
BL-05- LABORATORIO MECANICA (LABORATÓRIOS E MANUTENÇÃO) - 2º SÍSBOO



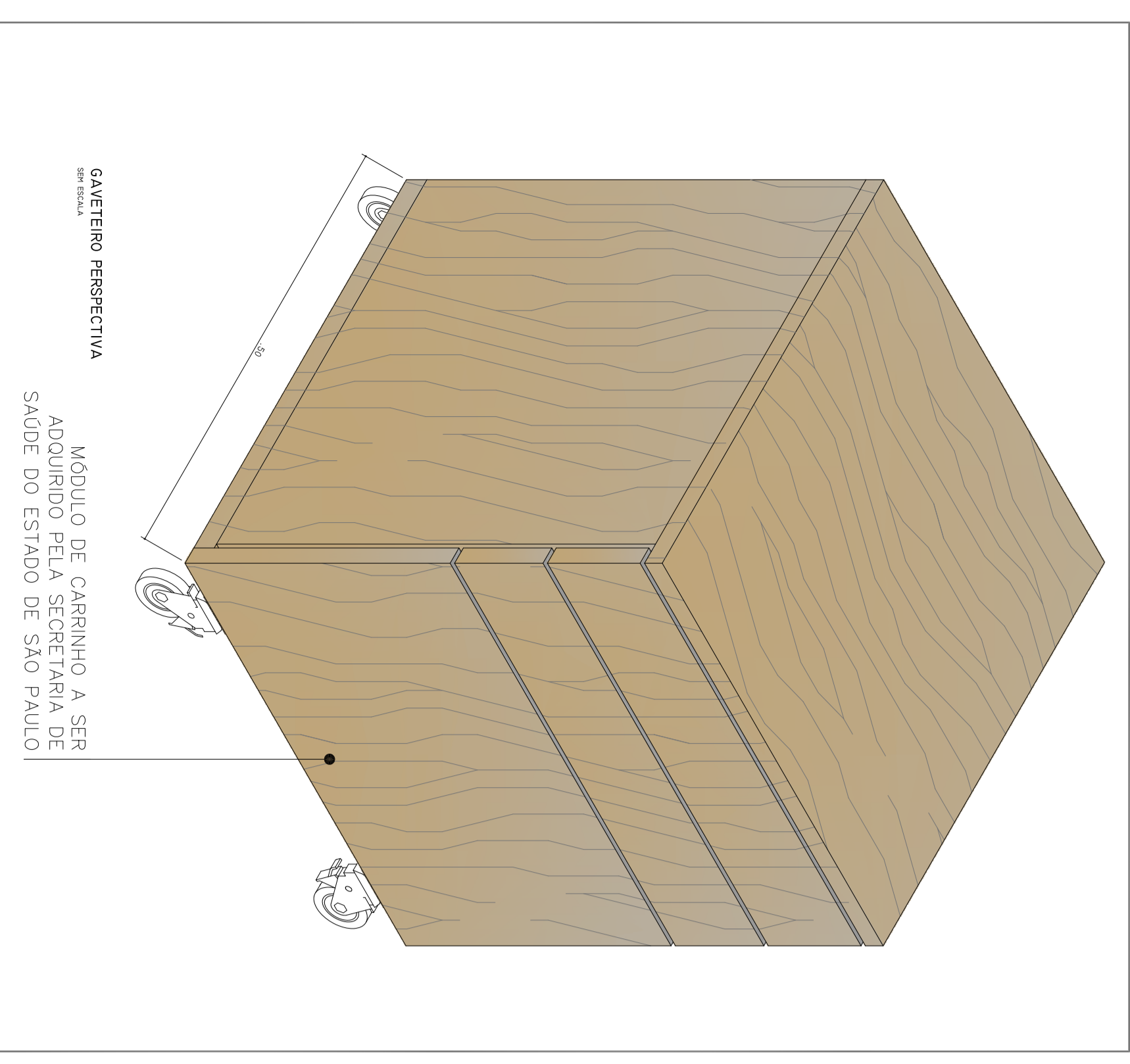
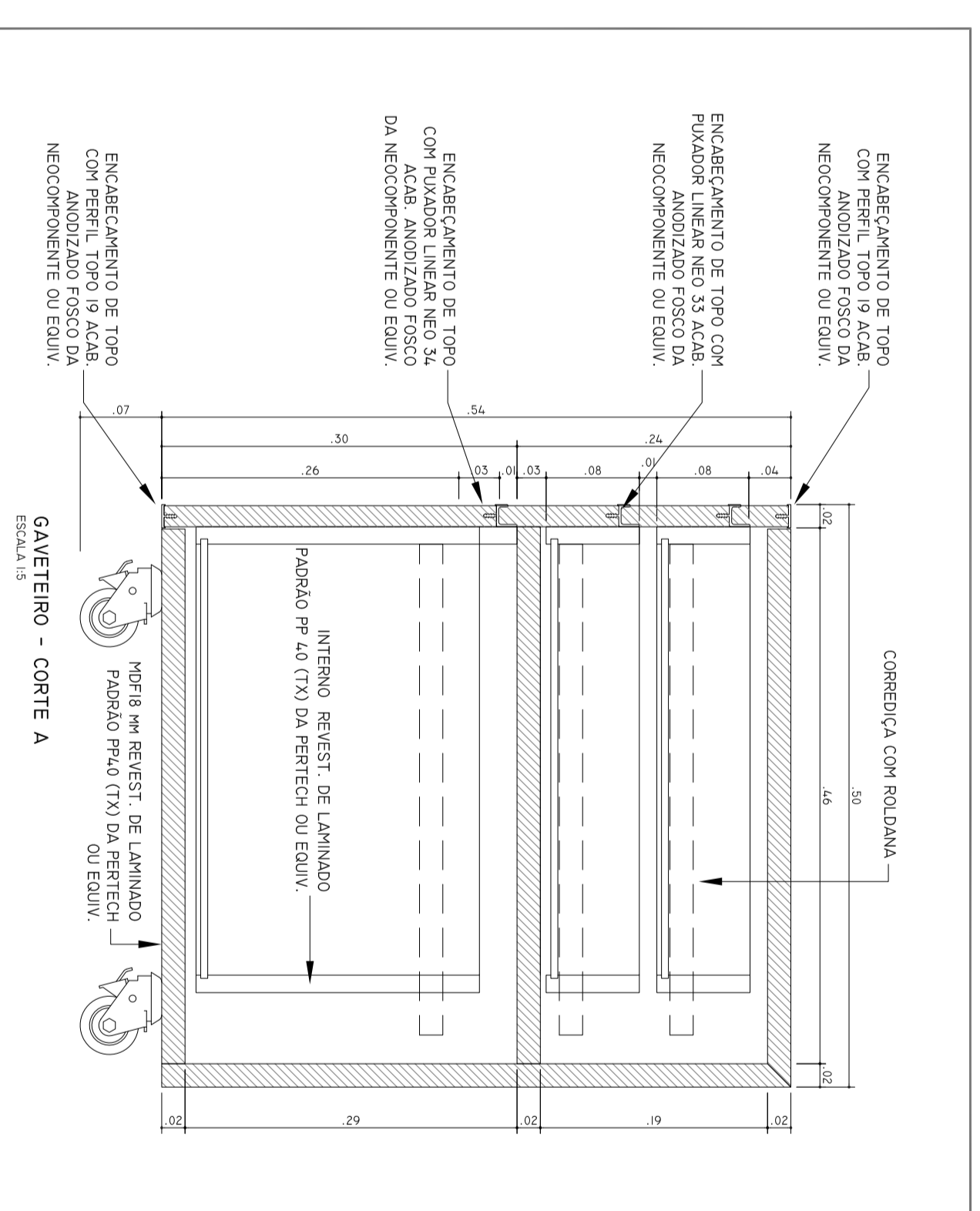
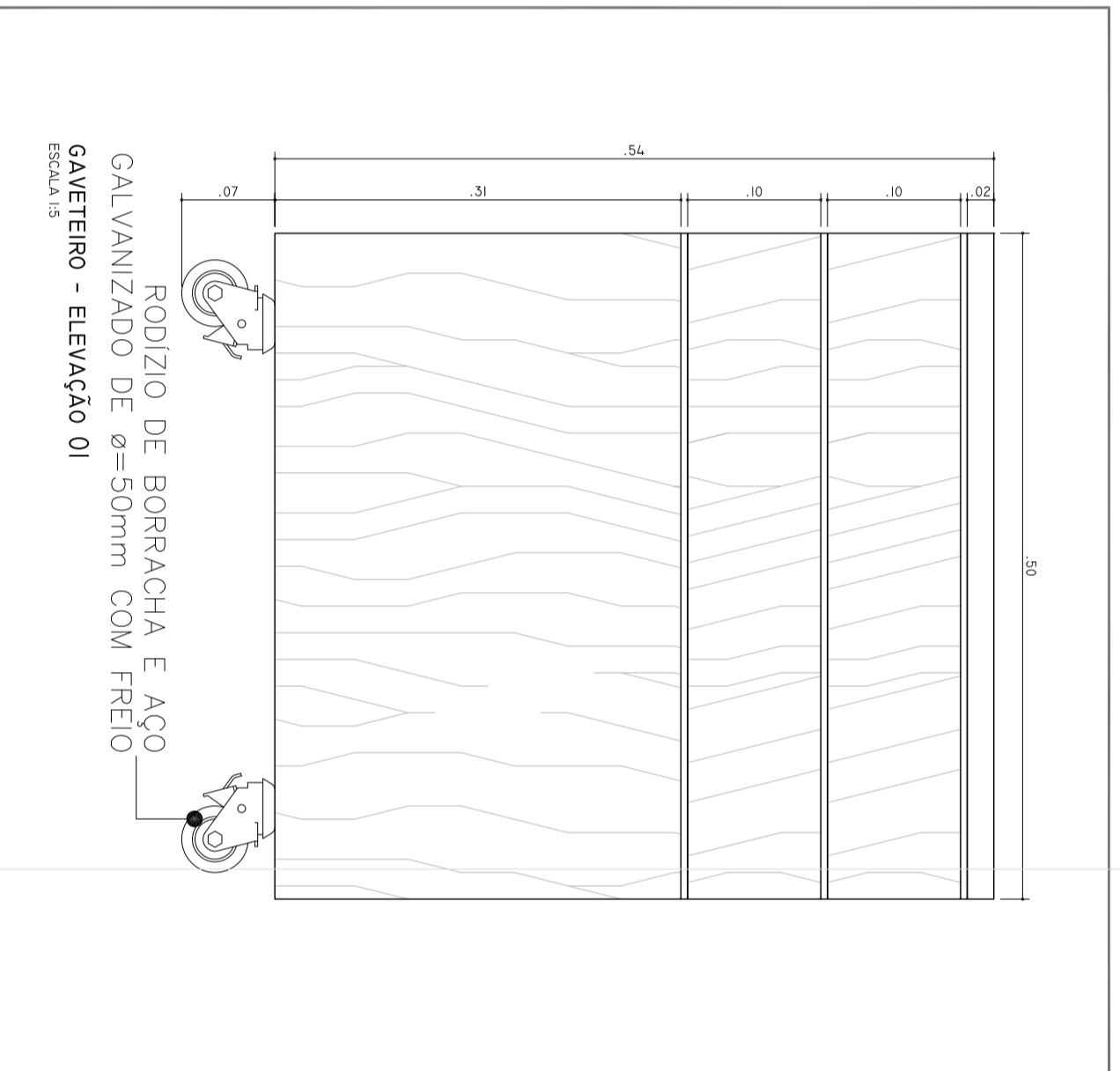
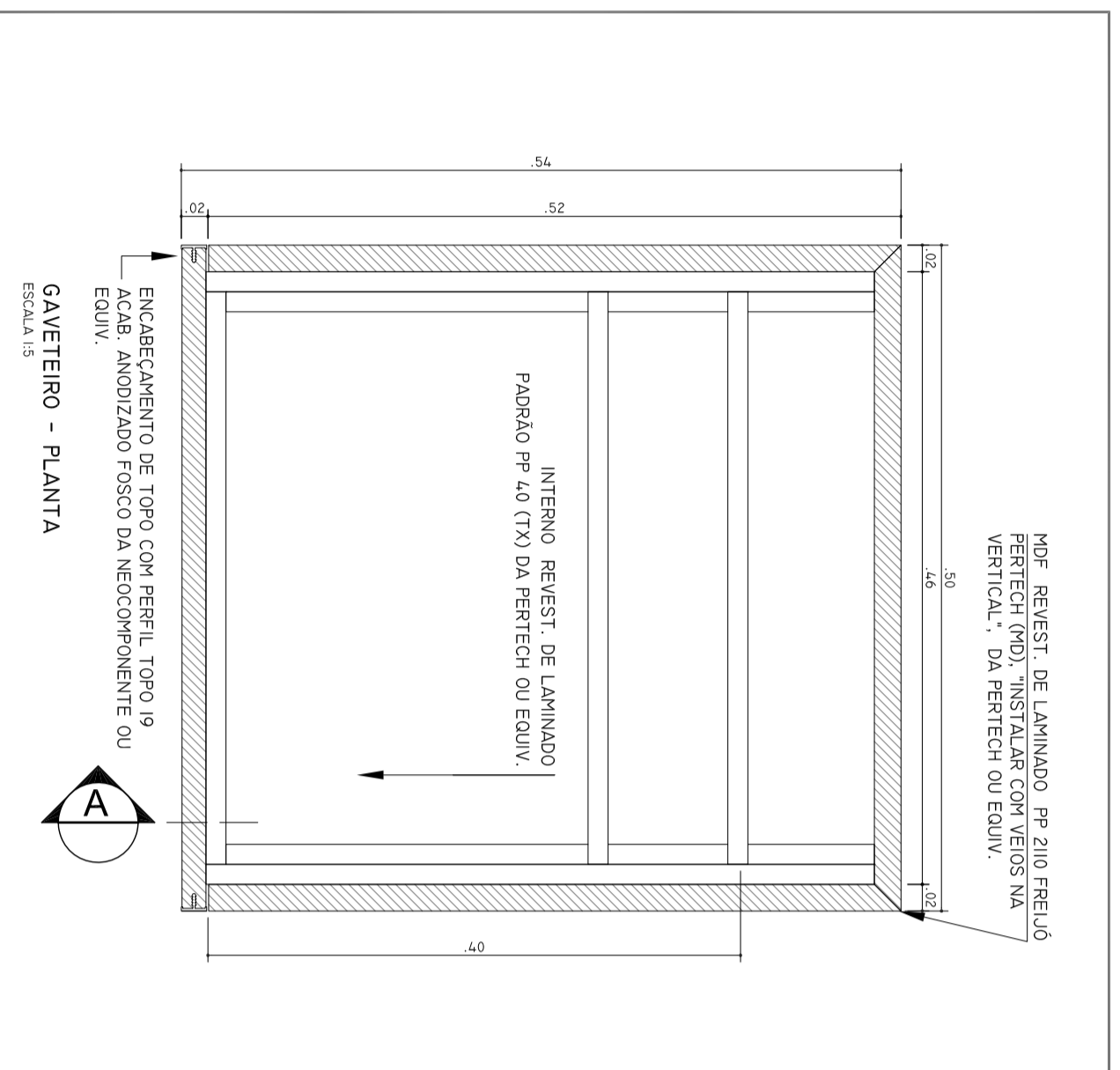
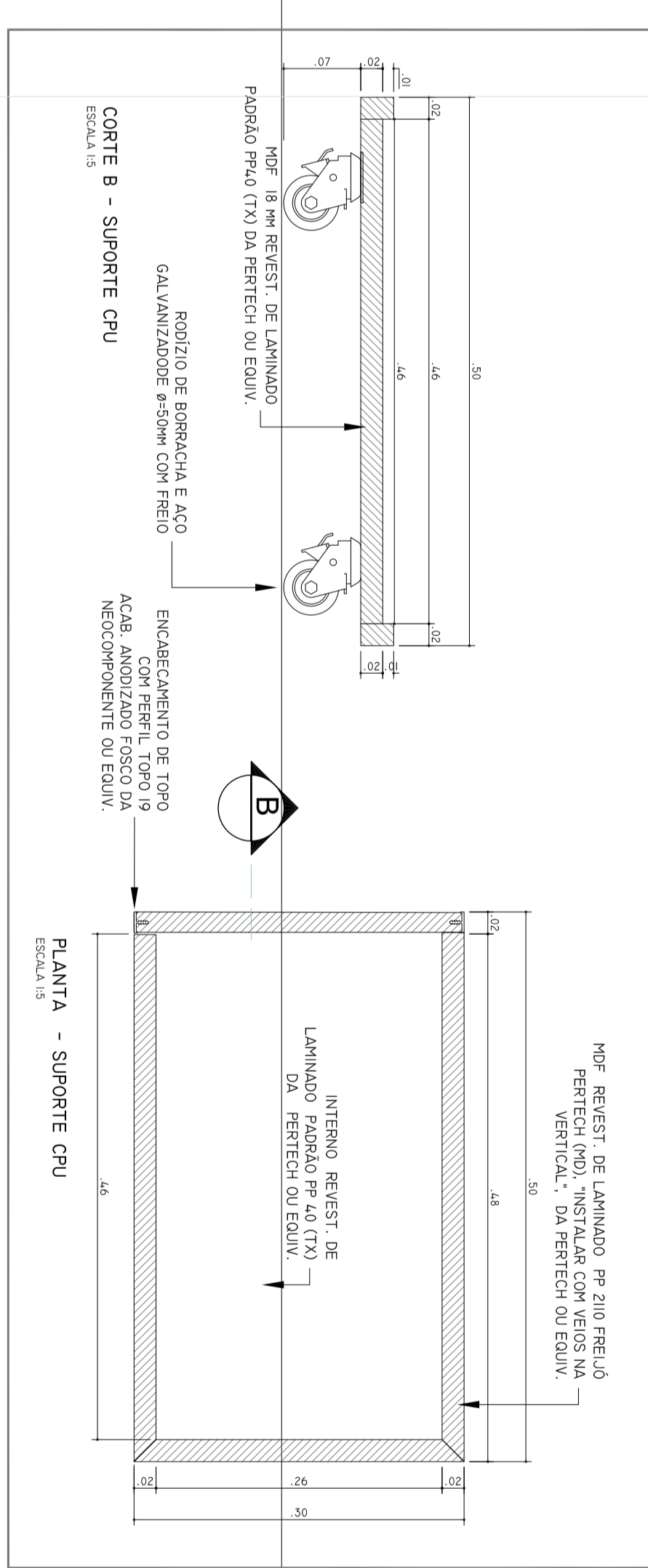
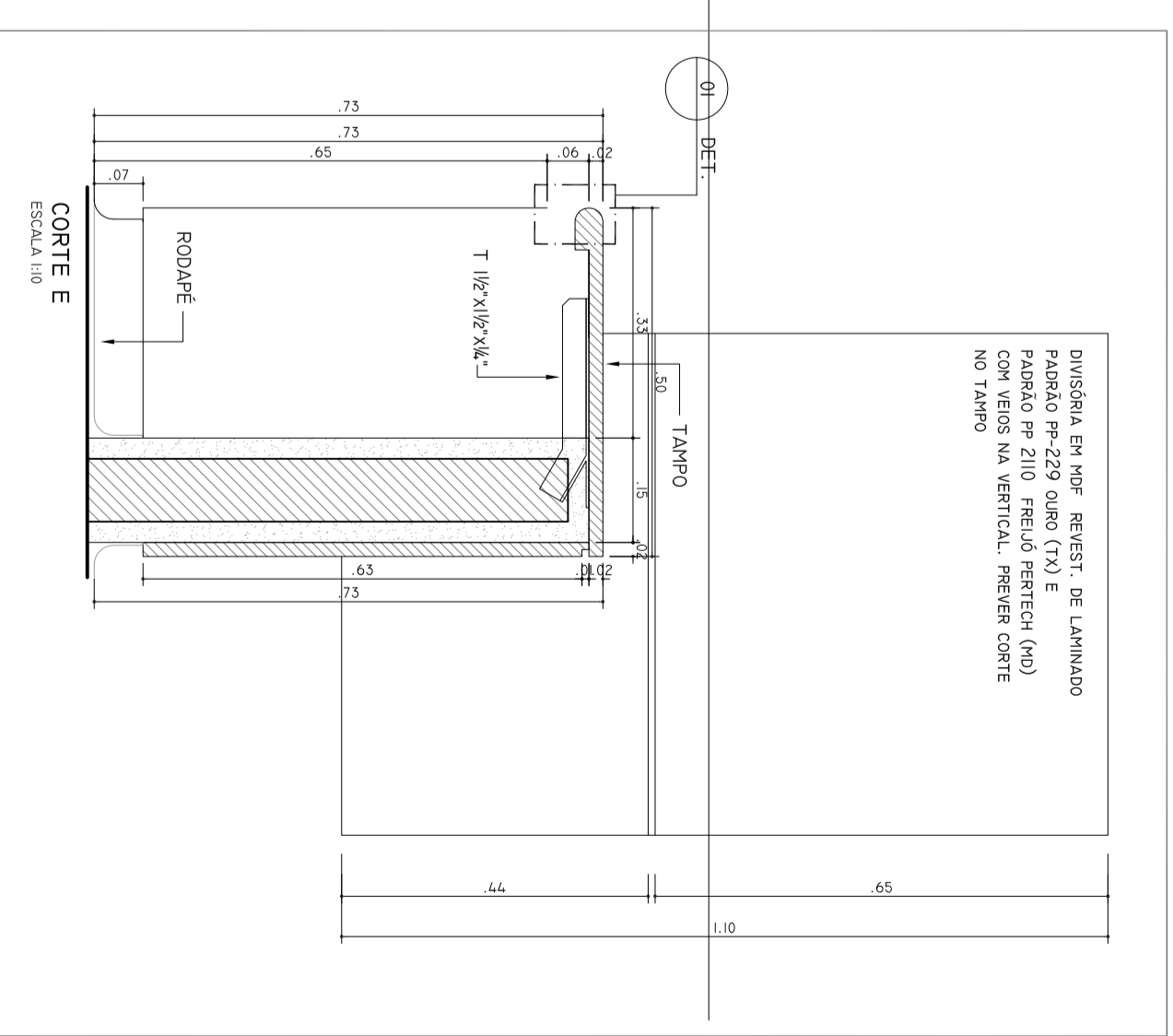
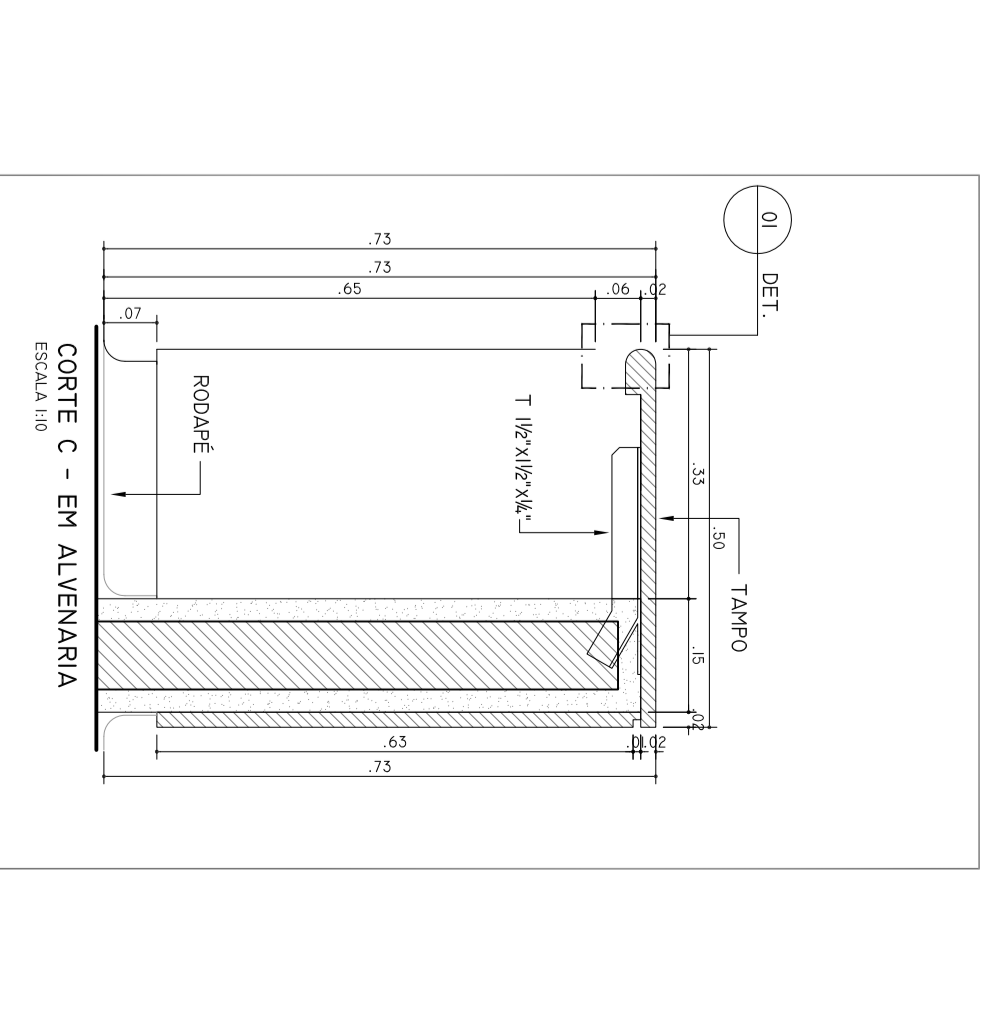
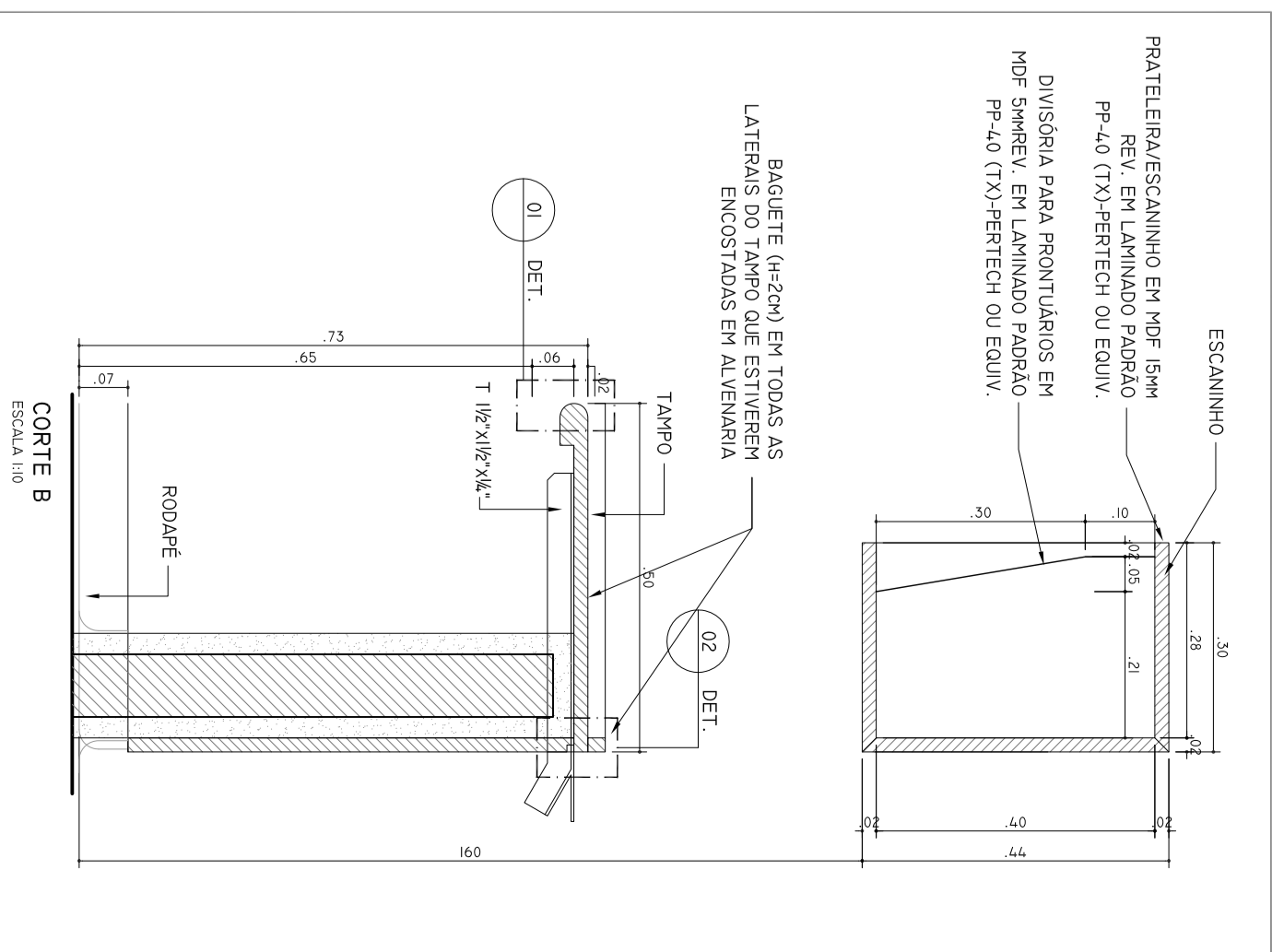
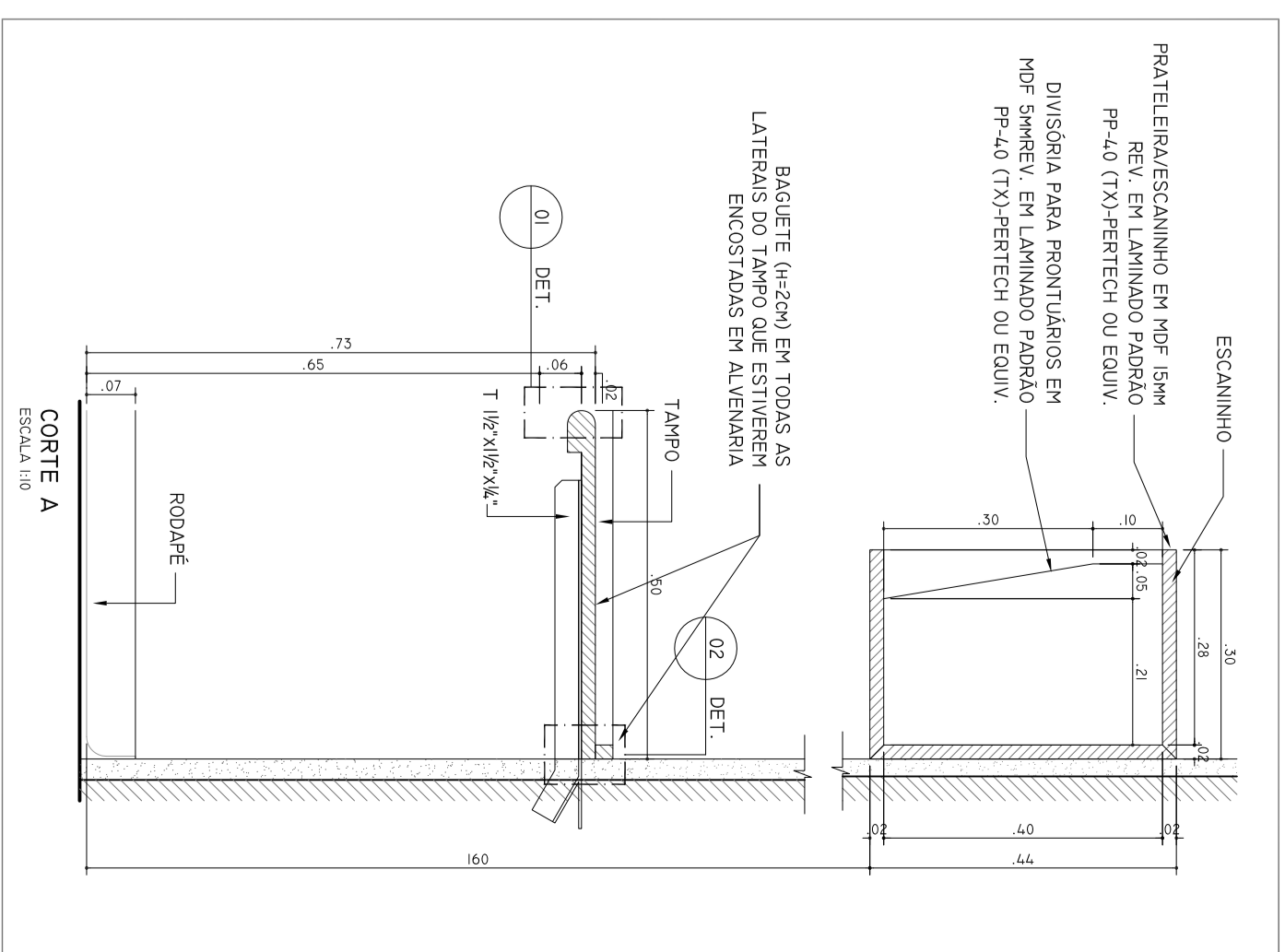
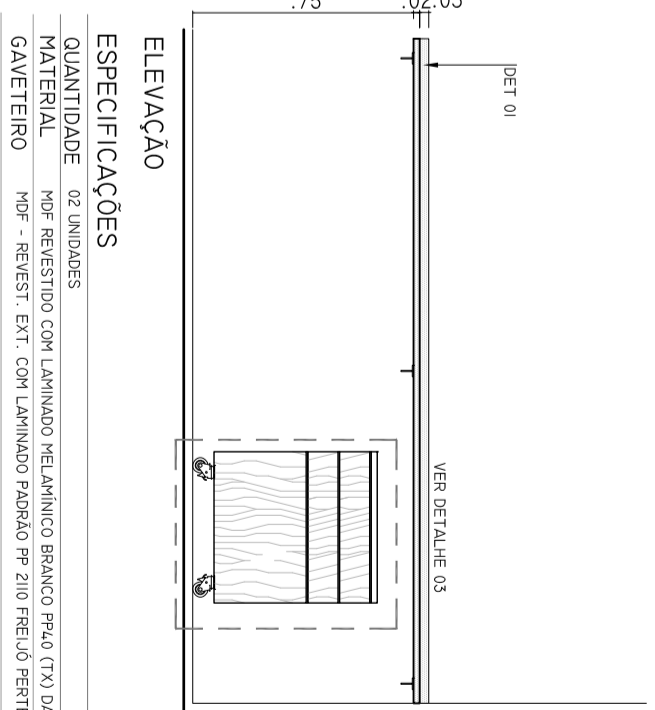
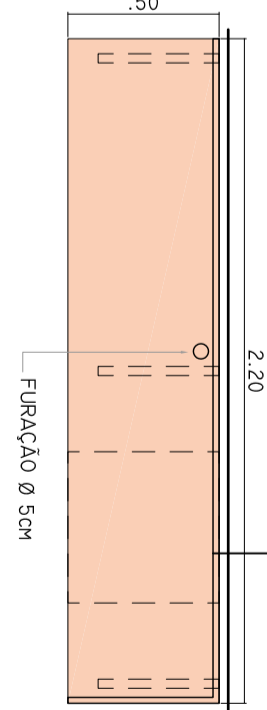
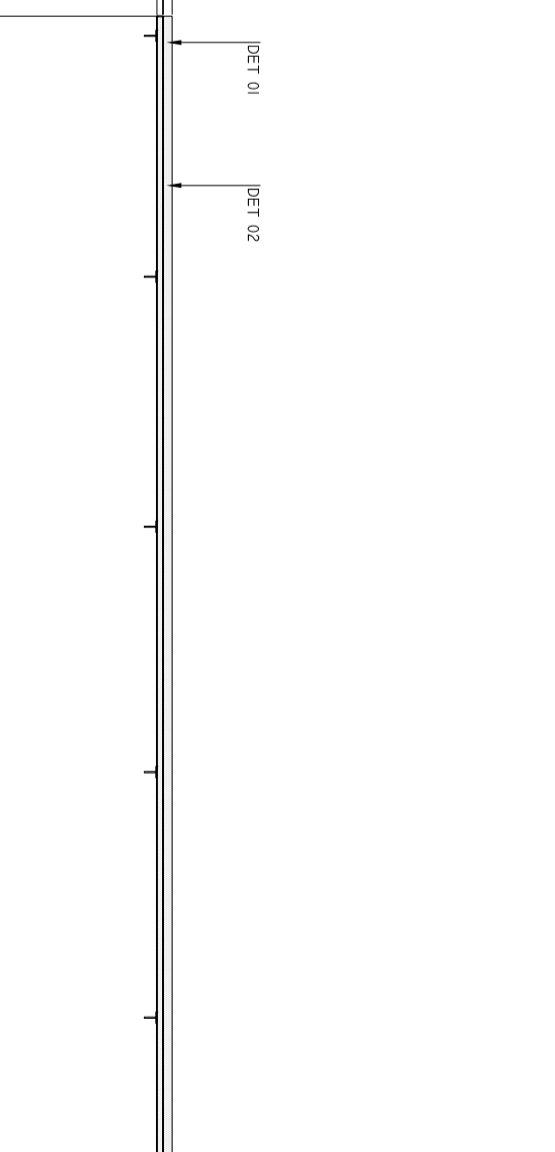
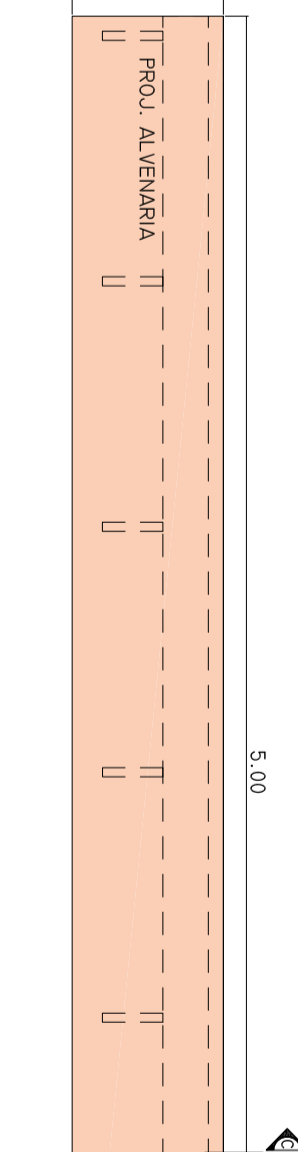
BL-06 - MANUTENÇÃO ELÉTRICA E PREGAL (LABORATÓRIOS E MANUTENÇÃO) - 2º SÍSBOO



BL-07 - MANUTENÇÃO ELÉTRICA E PREGAL (LABORATÓRIOS E MANUTENÇÃO) - 2º SÍSBOO - EXTERNO (FRONTO)



BL-08 - MANUTENÇÃO ELÉTRICA E PREGAL (LABORATÓRIOS E MANUTENÇÃO) - 2º SÍSBOO



NOTAS: 1. REVISAR MEDIDAS NO LOCAL. 2. MEDIDAS EM METRO, EXCETO ONDE INDICADO. 3. ...

SECRETARIA DE ESTADO DA SAUDE - SUS/SP INSTITUTO DE TECNOLOGIA EMILIO RIBAS PROJETO EXECUTIVO

valdeci ferreira & associados

Av. Dr. Faria Lima, 1188 - Jd. Paulista - São Paulo - SP - CEP: 05508-900