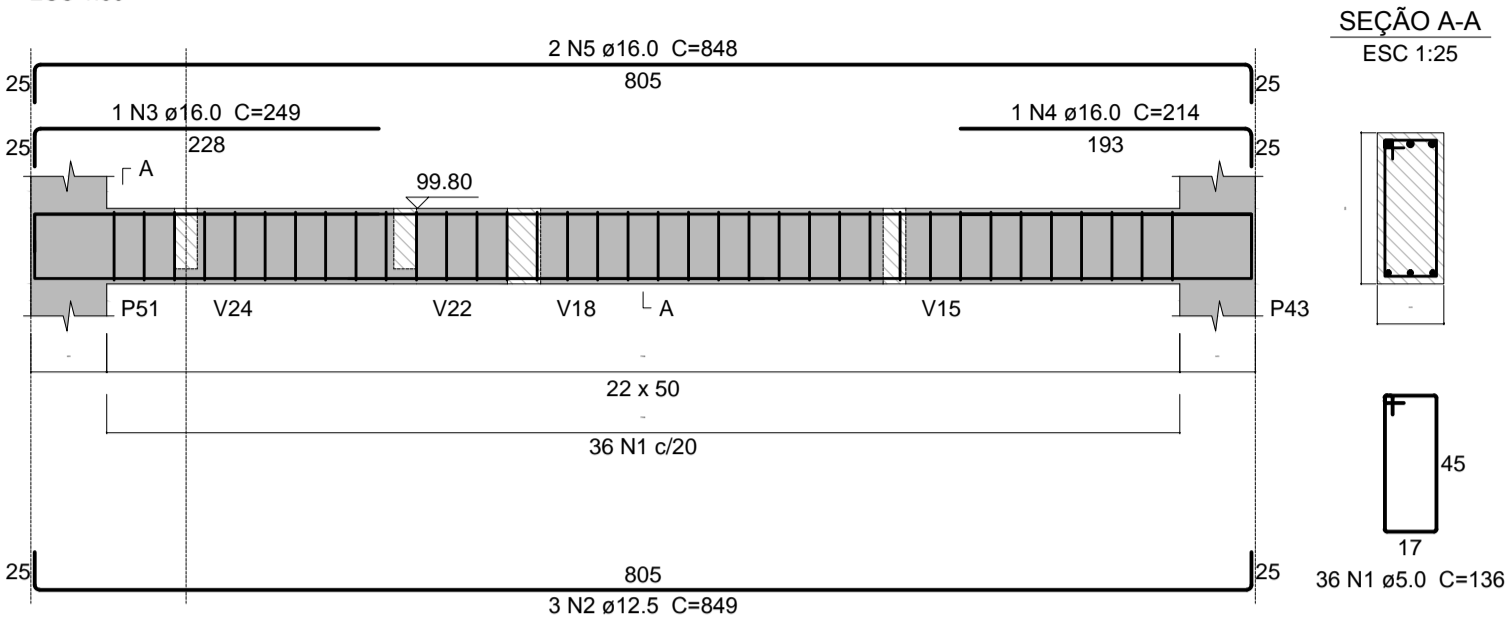
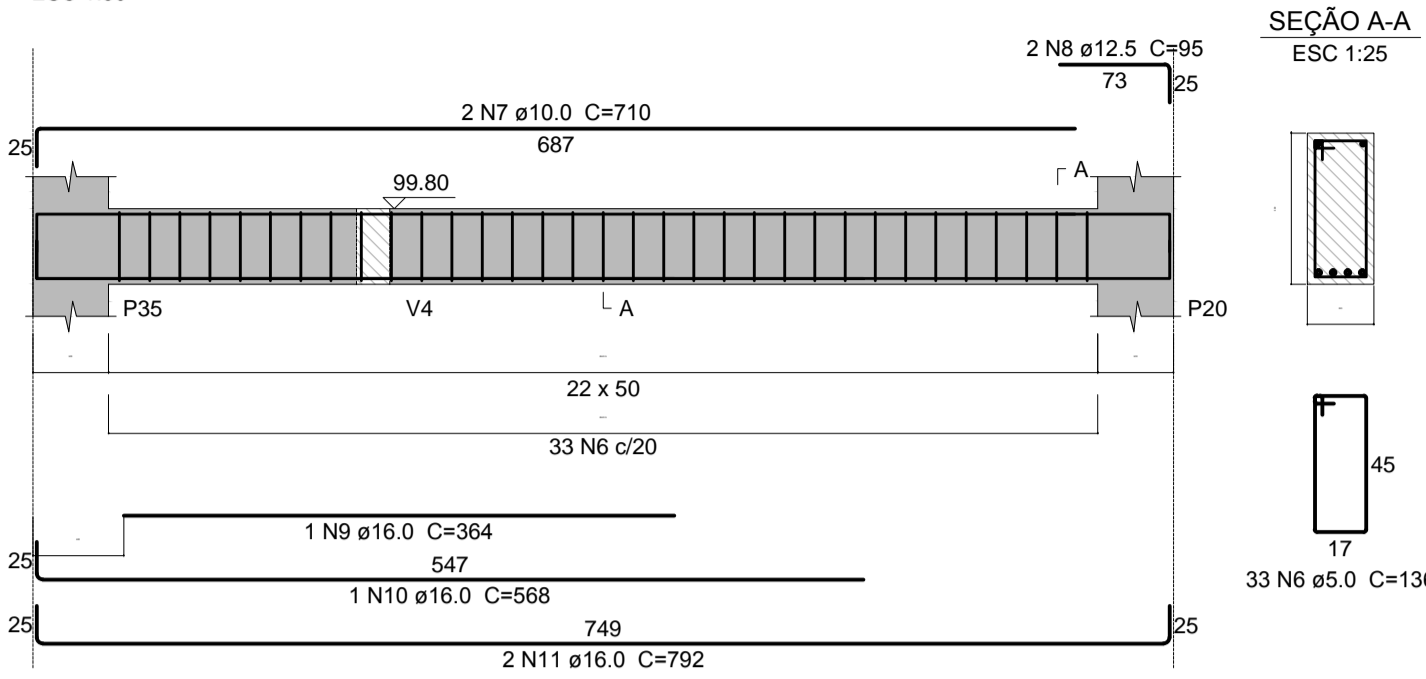


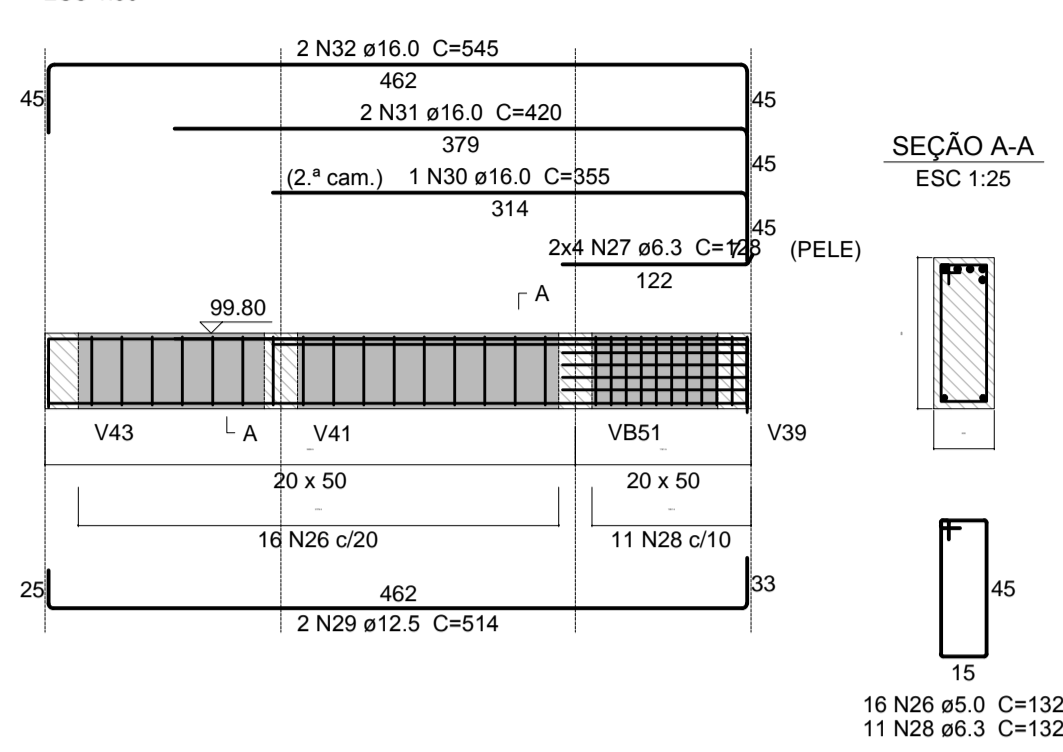
V73 (22 x 50)



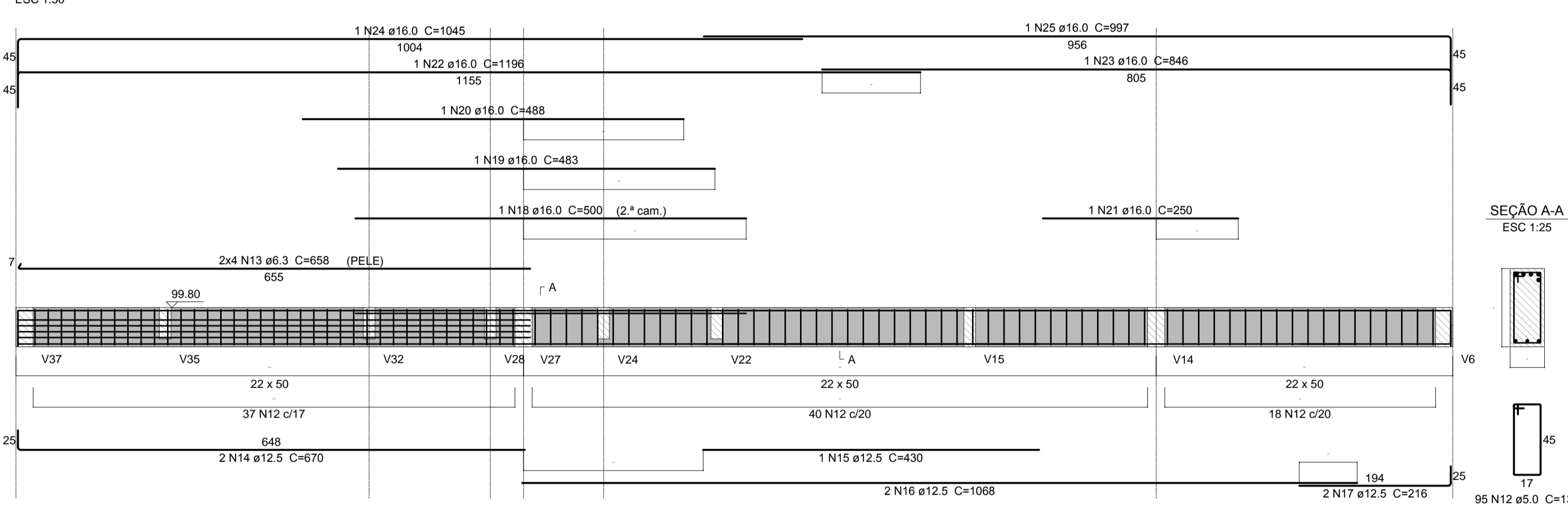
V74 (22 x 50)



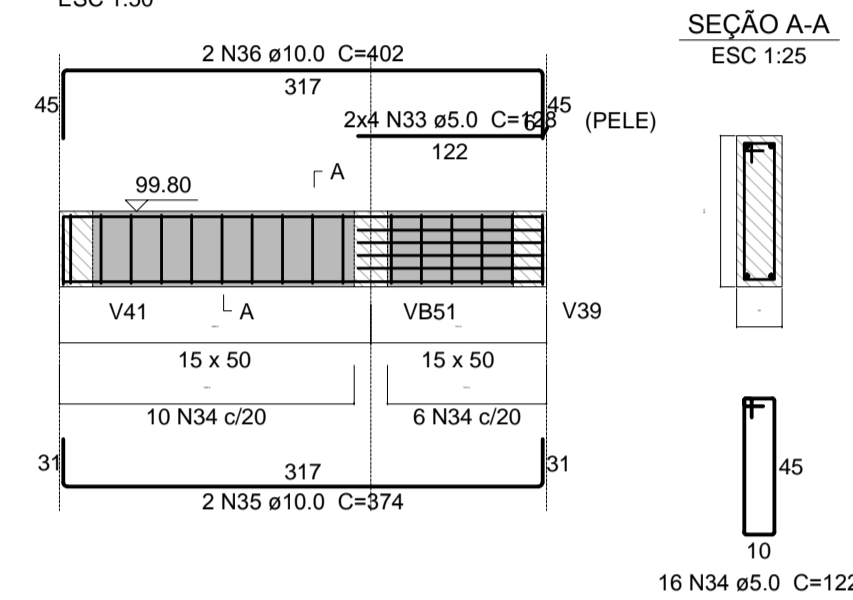
V76 (20 x 50)



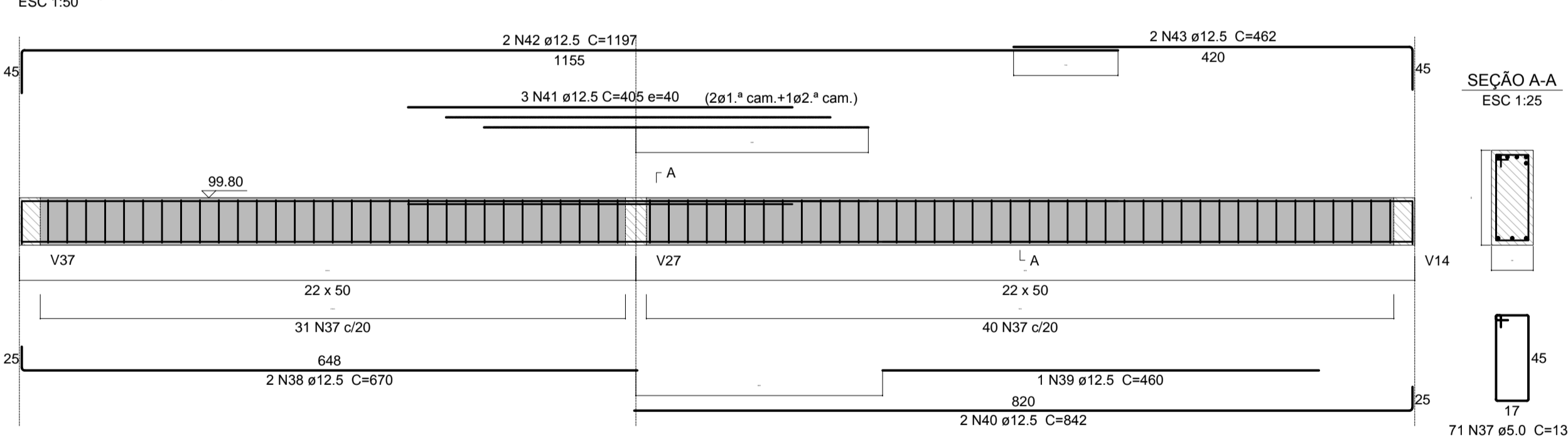
V75 (22 x 50)



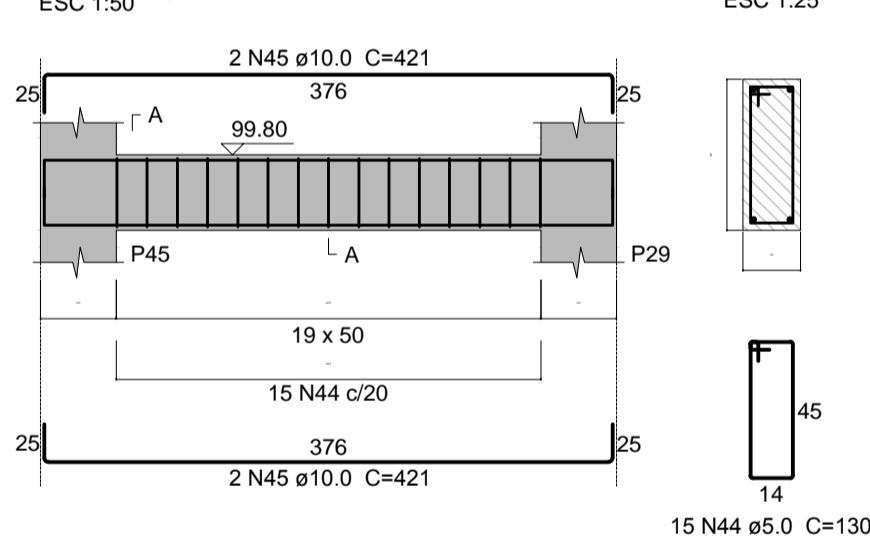
V77 (15 x 50)



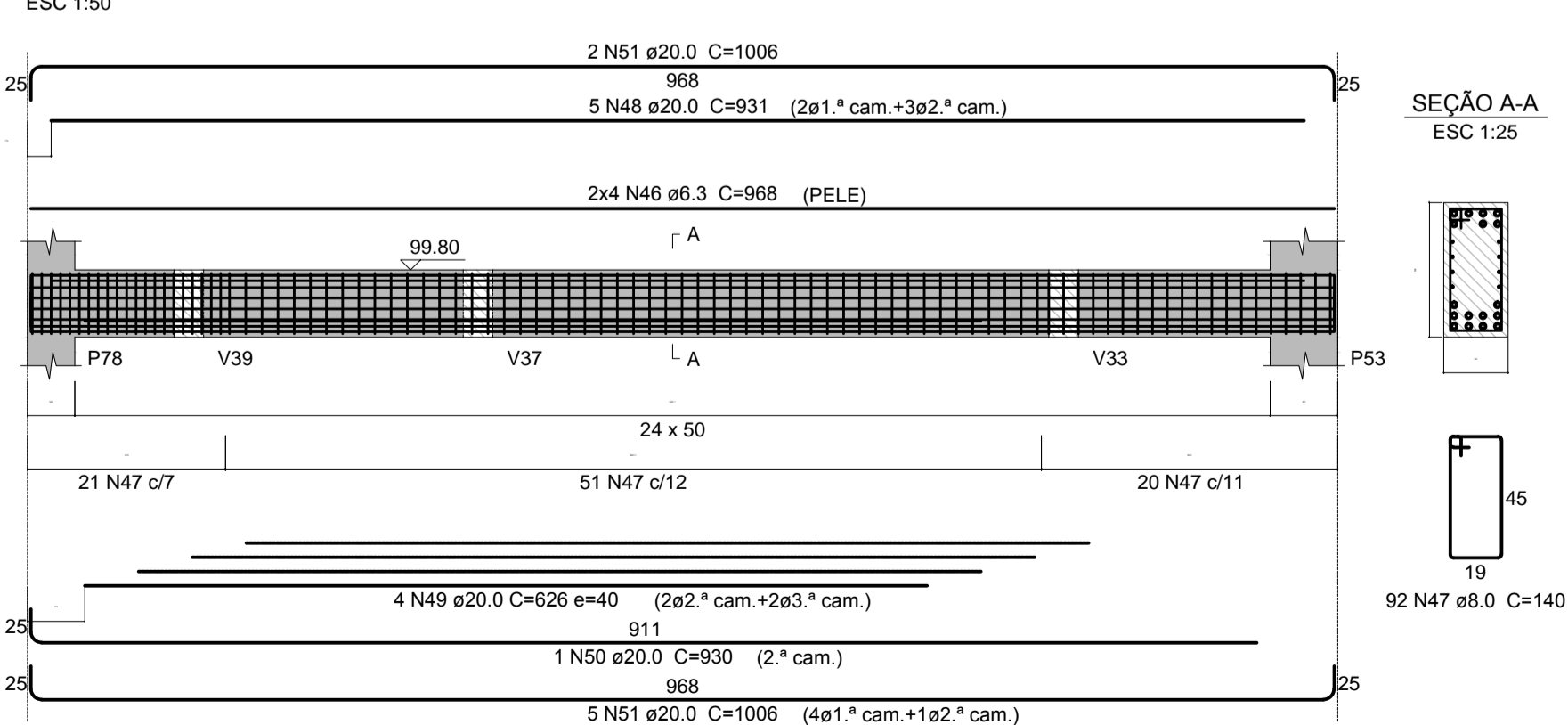
V78 (22 x 50)



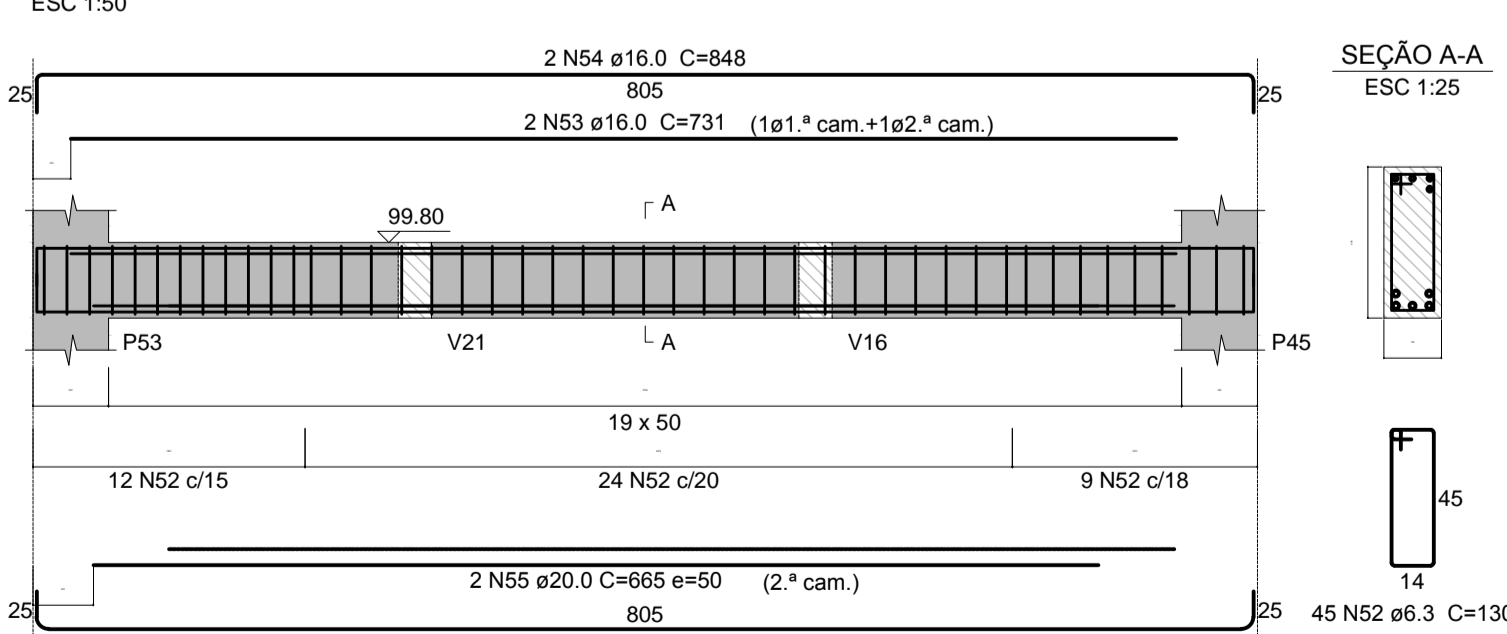
V81 (19 x 50)



V82 (24 x 50)



V83 (19 x 50)



Relação do aço

ELEMENTO	AÇO	N	DIAM (mm)	QUANT	C.UNIT (cm)	C.TOTAL (cm)
V73	CA60	1	5.0	36	136	4896
	CA50	2	12.5	3	849	2547
	CA50	3	16.0	1	249	249
	CA50	4	16.0	1	214	214
V74	CA50	5	16.0	2	848	1696
	CA60	6	5.0	33	136	4488
	CA50	7	10.0	2	710	1420
	CA50	8	12.5	2	95	190
	CA50	9	16.0	1	364	364
	CA50	10	16.0	1	568	568
	CA50	11	16.0	2	792	1584
V75	CA60	12	5.0	95	136	12920
	CA50	13	6.3	8	658	5264
	CA50	14	12.5	2	670	1340
	CA50	15	12.5	1	430	430
	CA50	16	12.5	2	1068	2136
	CA50	17	12.5	2	216	432
	CA50	18	16.0	1	500	500
	CA50	19	16.0	1	483	483
	CA50	20	16.0	1	488	488
	CA50	21	16.0	1	250	250
	CA50	22	16.0	1	1196	1196
V76	CA50	23	16.0	1	946	946
	CA50	24	16.0	1	1045	1045
	CA50	25	16.0	1	997	997
	CA60	26	5.0	16	132	2112
	CA50	27	6.3	8	128	1024
V77	CA50	28	6.3	11	132	1452
	CA50	29	12.5	2	514	1028
	CA50	30	16.0	1	355	355
	CA50	31	16.0	2	420	840
	CA50	32	16.0	2	545	1090
	CA60	33	5.0	8	128	1024
	CA60	34	5.0	16	122	1952
	CA50	35	10.0	2	374	748
	CA50	36	10.0	2	402	804
	CA60	37	5.0	71	136	9656
V78	CA50	38	12.5	2	670	1340
	CA50	39	12.5	1	460	460
	CA50	40	12.5	2	842	1684
	CA50	41	12.5	3	405	1215
V81	CA50	42	12.5	2	1197	2394
	CA50	43	12.5	2	462	924
	CA60	44	5.0	15	130	1950
	CA50	45	10.0	4	421	1684
	V82	CA50	46	6.3	8	968
CA50		47	8.0	92	140	12880
CA50		48	20.0	5	931	4655
CA50		49	20.0	4	626	2504
CA50		50	20.0	1	930	930
CA50		51	20.0	7	1006	7042
V83	CA50	52	6.3	45	130	5850
	CA50	53	16.0	2	731	1462
	CA50	54	16.0	2	848	1696
	CA50	55	20.0	2	665	1330
CA50	56	20.0	3	843	2529	

Resumo do aço

AÇO	DIAM (mm)	C.TOTAL (m)	QUANT + 5 % (Barras)	UNIT	PESO + 5 % (kg)
CA50	6.3	213.4	19	12 m	55
	8.0	128.8	12	12 m	53
	10.0	46.6	5	12 m	30
	12.5	161.2	15	12 m	163
	16.0	159.3	14	12 m	264
CA60	5.0	189.9	17	12 m	492
CA60	5.0	390	35	12 m	63
PESO TOTAL (kg)					
CA50		1057			
CA60		63			

Volume de concreto (C-25) = 8.37 m³
Área de forma = 94.99 m²

00	EMISSÃO INICIAL		
REV.	DESCRIÇÃO	RESPONSÁVEL	DATA
Secretaria de Estado da Saúde		GOVERNO DO ESTADO SÃO PAULO	
HOSPITAL REGIONAL DR. LEOPOLDO BEVILACQUA		BLOCO PRINCIPAL	
ARMADURA DAS VIGAS BALDRAMES - 6 / 7		PROJETO DE ESTRUTURAS	
H-040		EST-07 00	
Av. Dr. Enéas Carvalho de Aguiar, nº188, 3º andar		SÃO PAULO, 12/2018	
Tel. (11)3066 8420 Fax (11)3066 8482		Arq. M. CRISTINA GOMES JOTTEN	