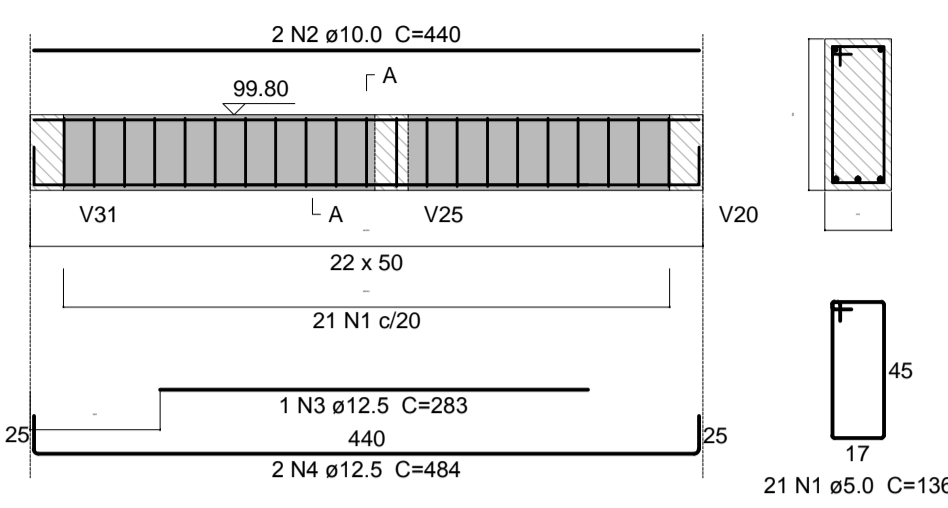
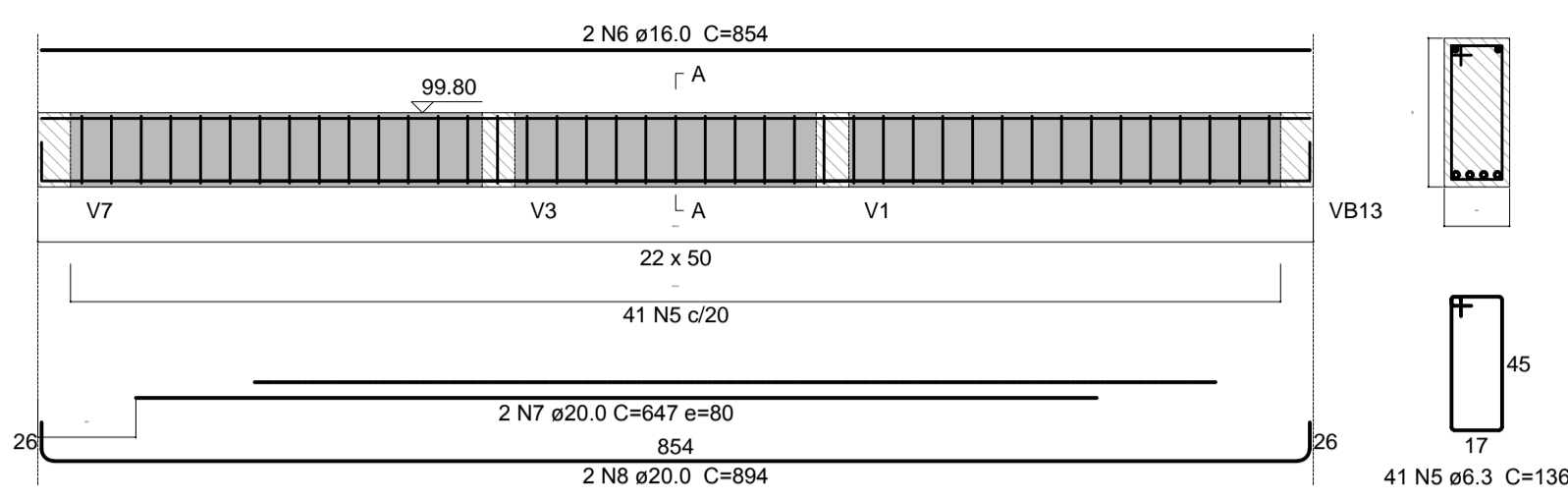


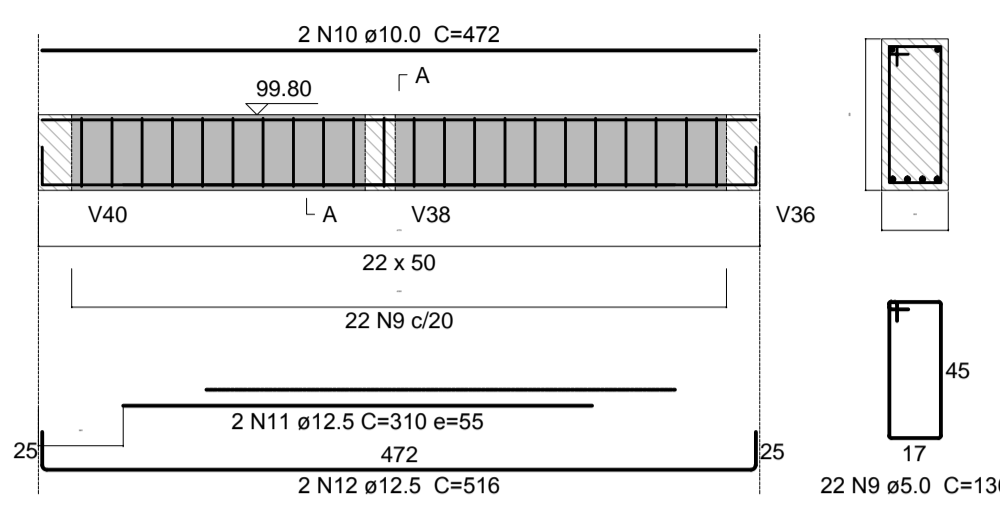
V53 (22 x 50)
ESC 1:50



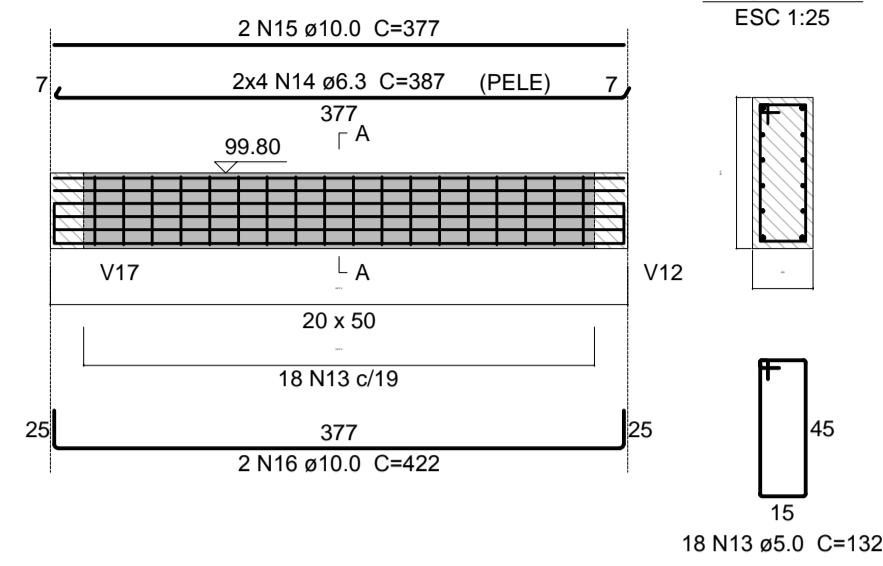
V56 (22 x 50)
ESC 1:50



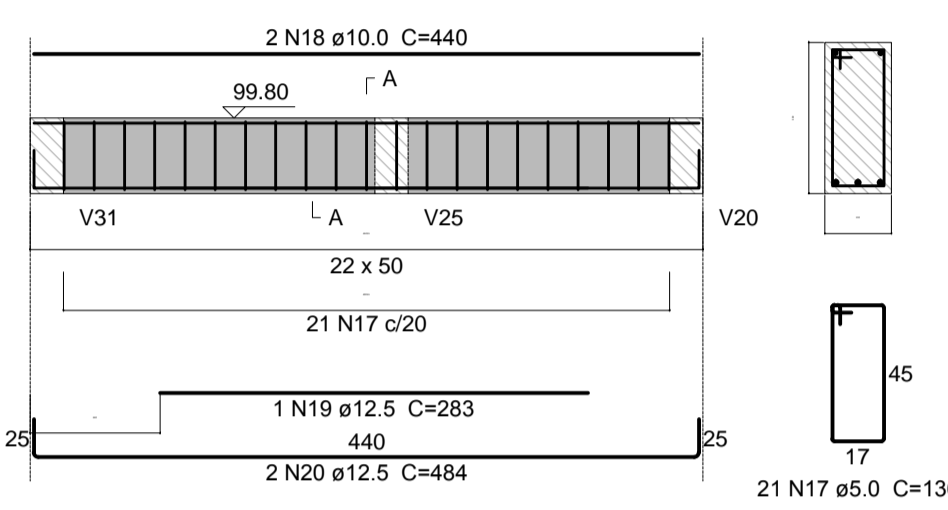
V57 (22 x 50)
ESC 1:50



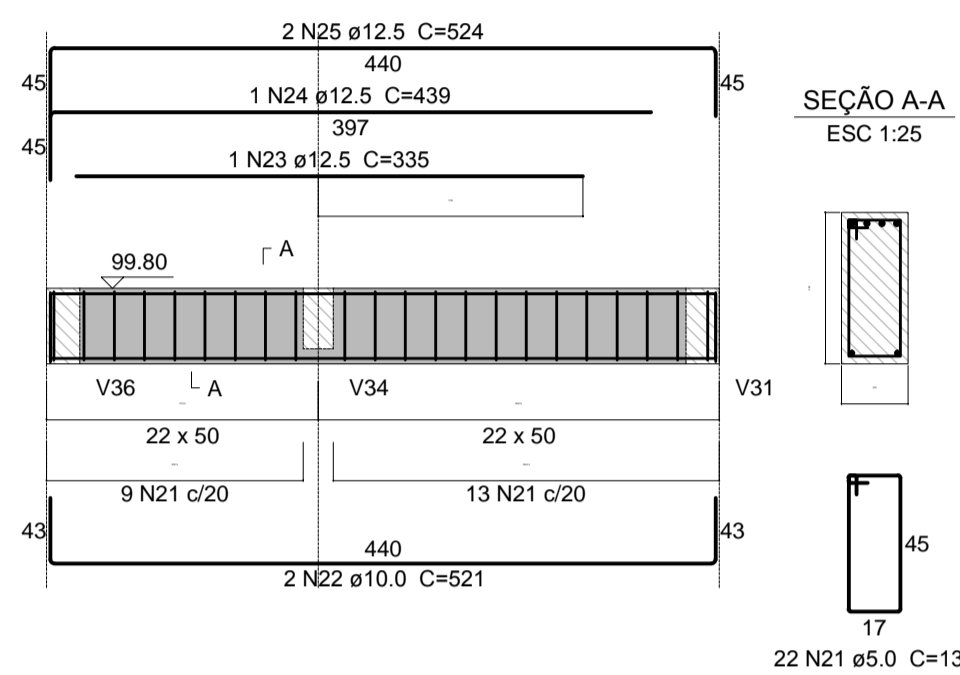
V58 (20 x 50)
ESC 1:50



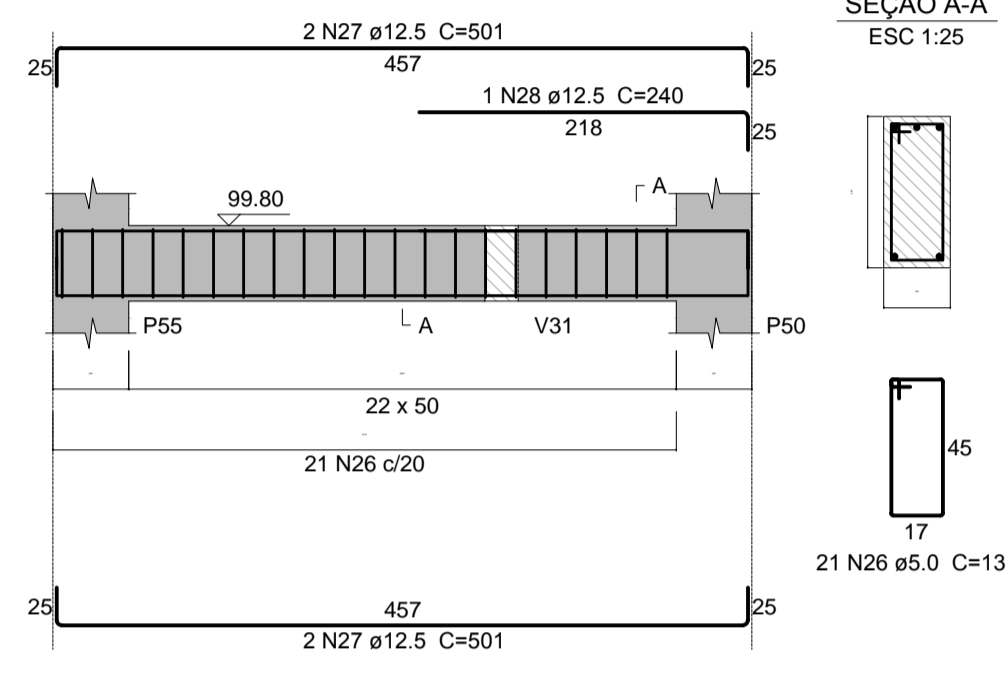
V59 (22 x 50)
ESC 1:50



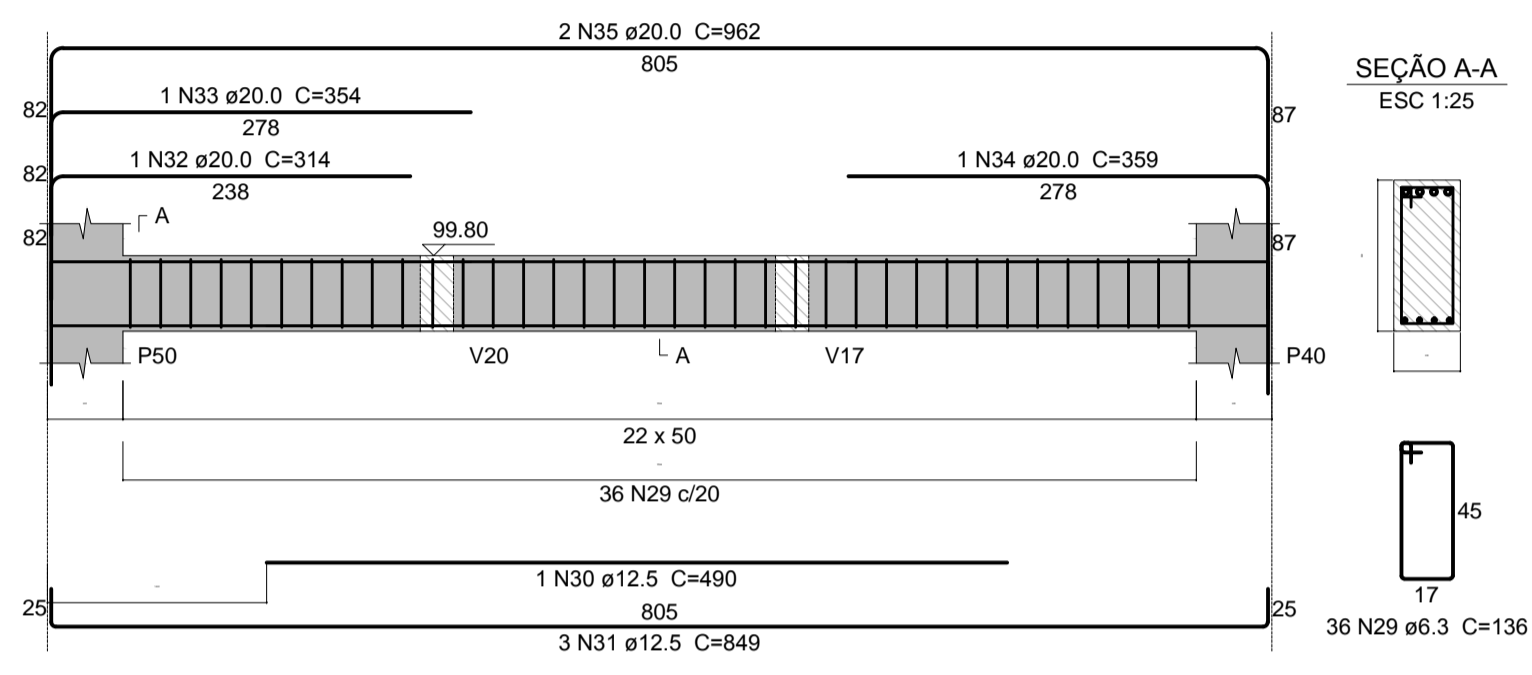
V60 (22 x 50)
ESC 1:50



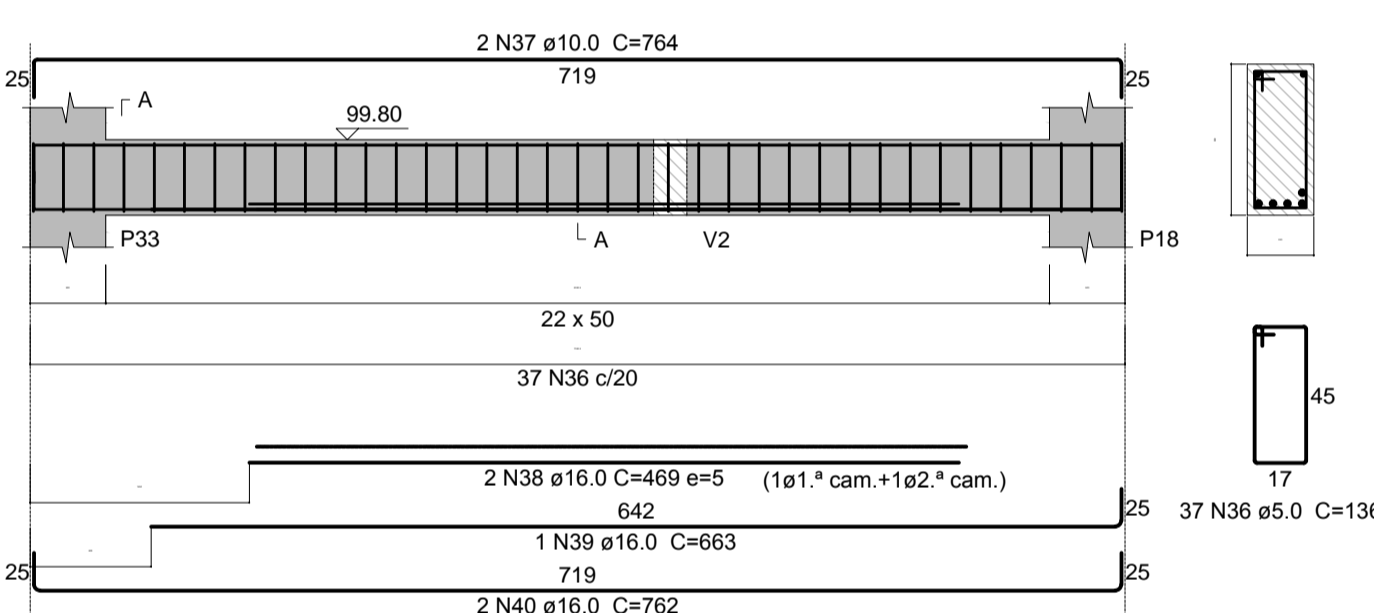
V61 (22 x 50)
ESC 1:50



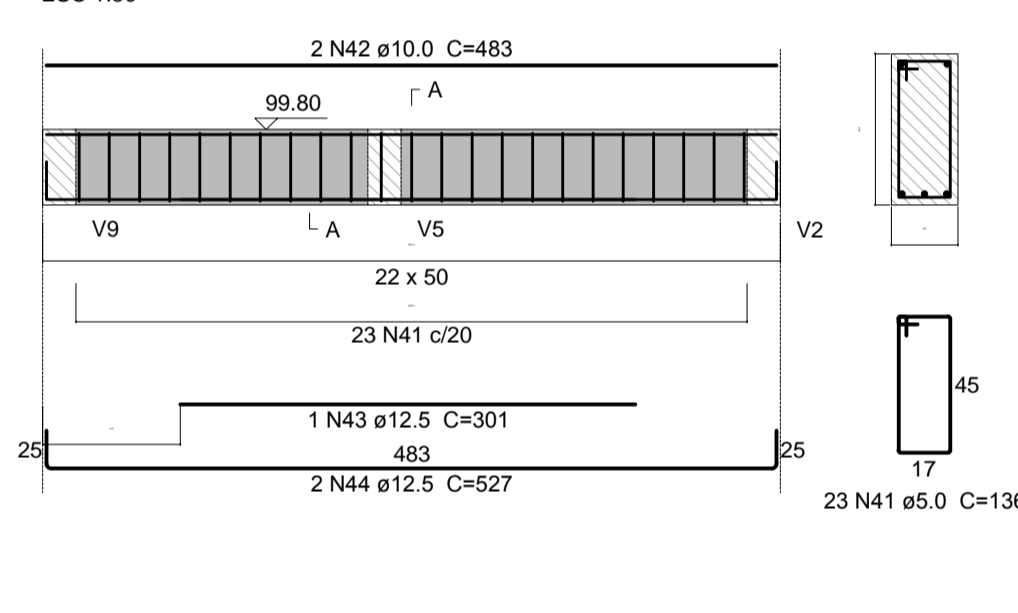
V62 (22 x 50)
ESC 1:50



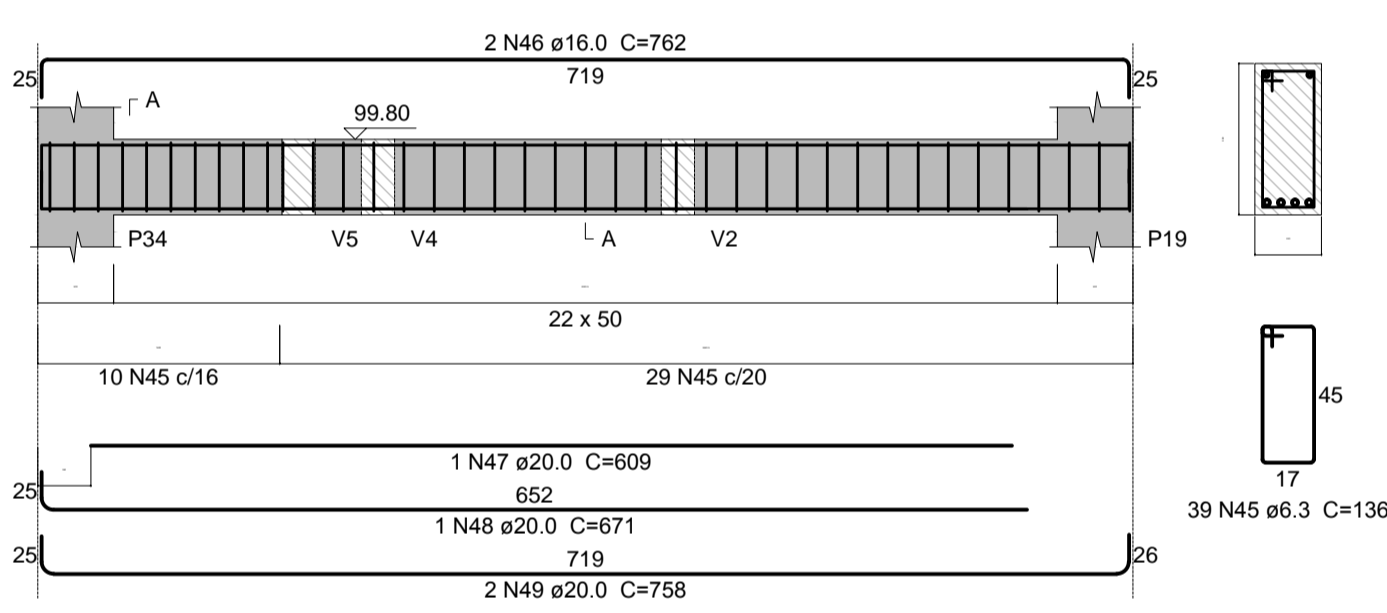
V63 (22 x 50)
ESC 1:50



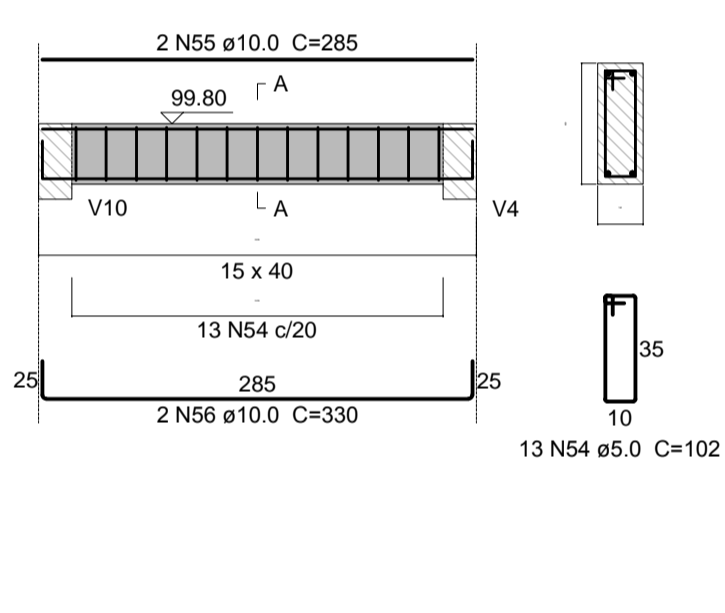
V64 (22 x 50)
ESC 1:50



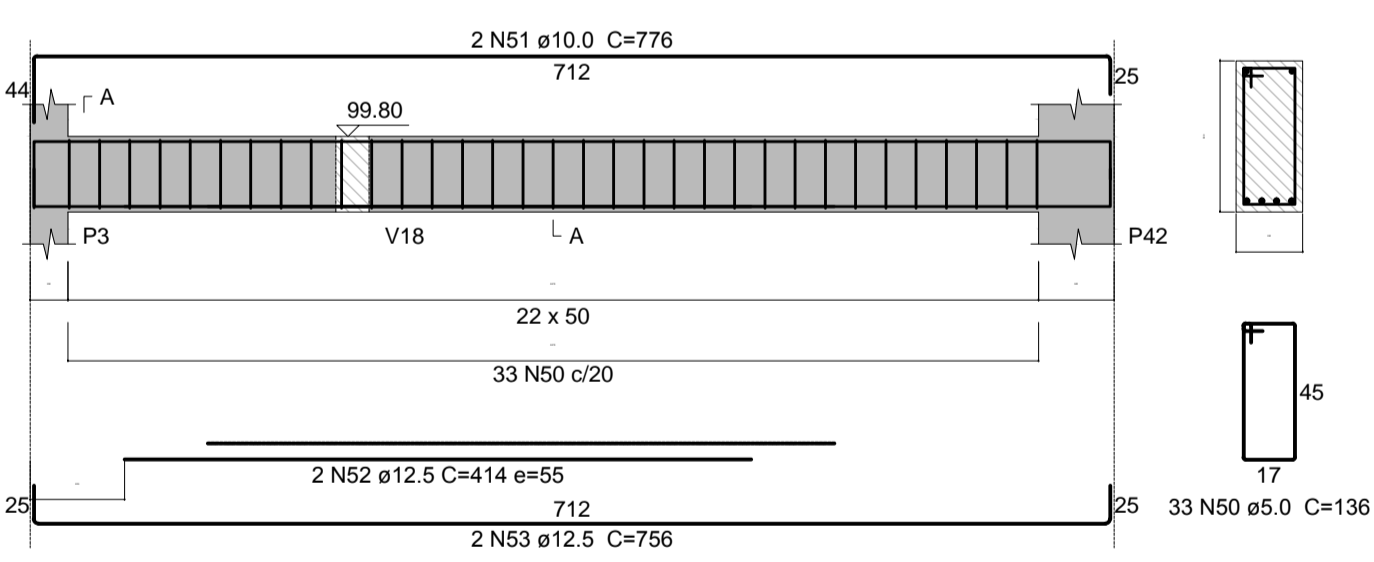
V65 (22 x 50)
ESC 1:50



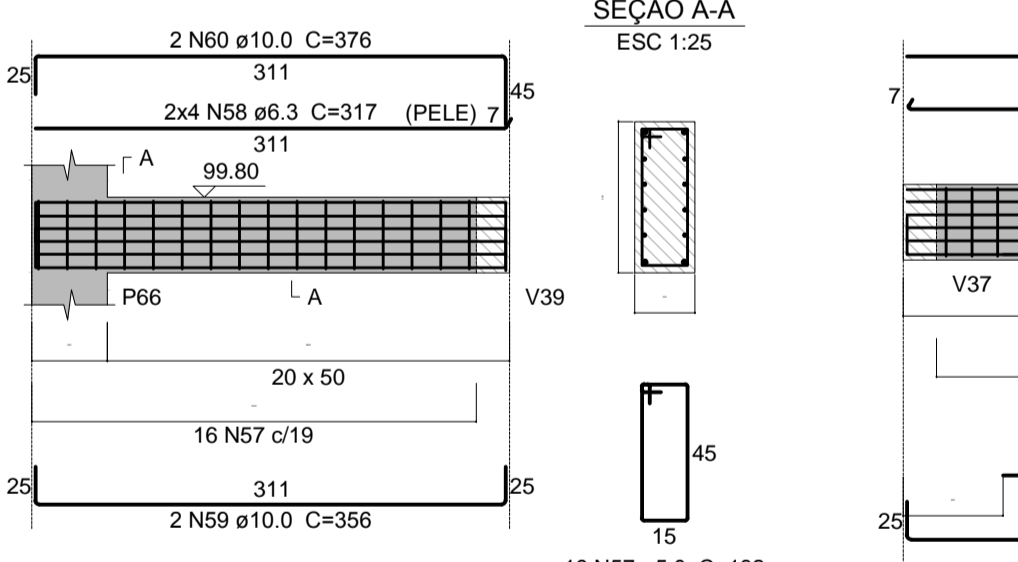
V67 (15 x 40)
ESC 1:50



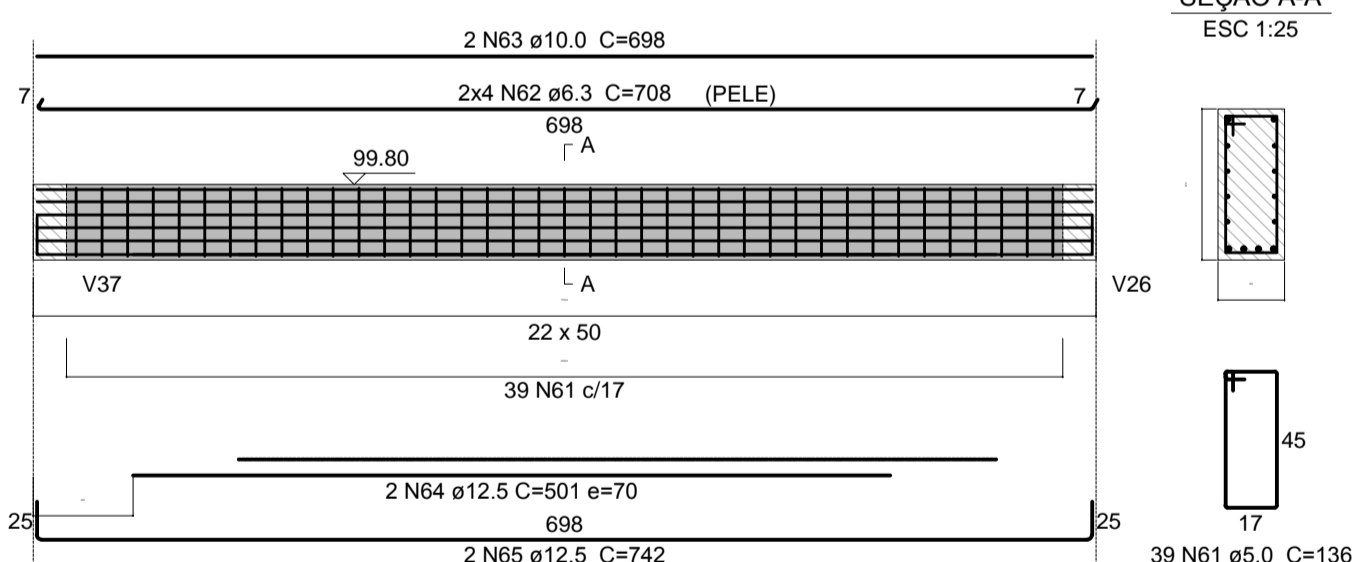
V66 (22 x 50)
ESC 1:50



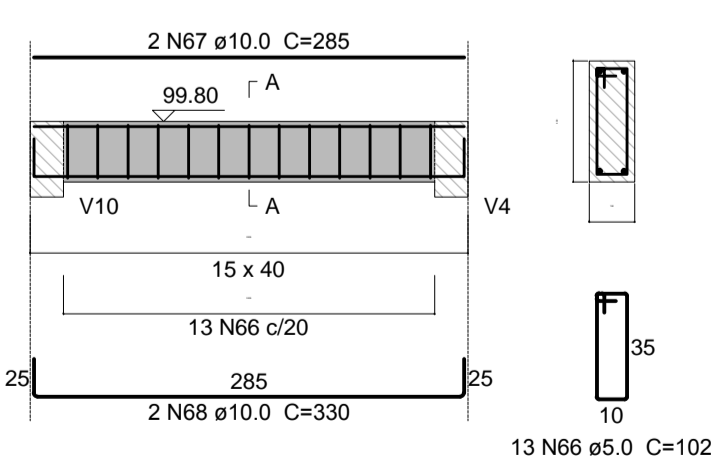
V68 (20 x 50)
ESC 1:50



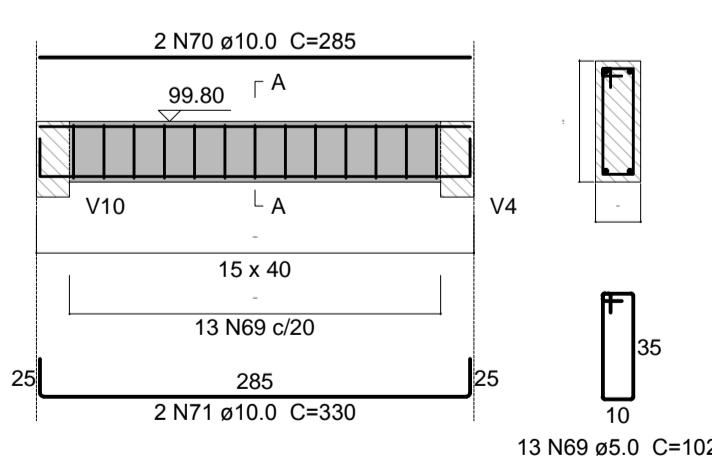
V69 (22 x 50)
ESC 1:50



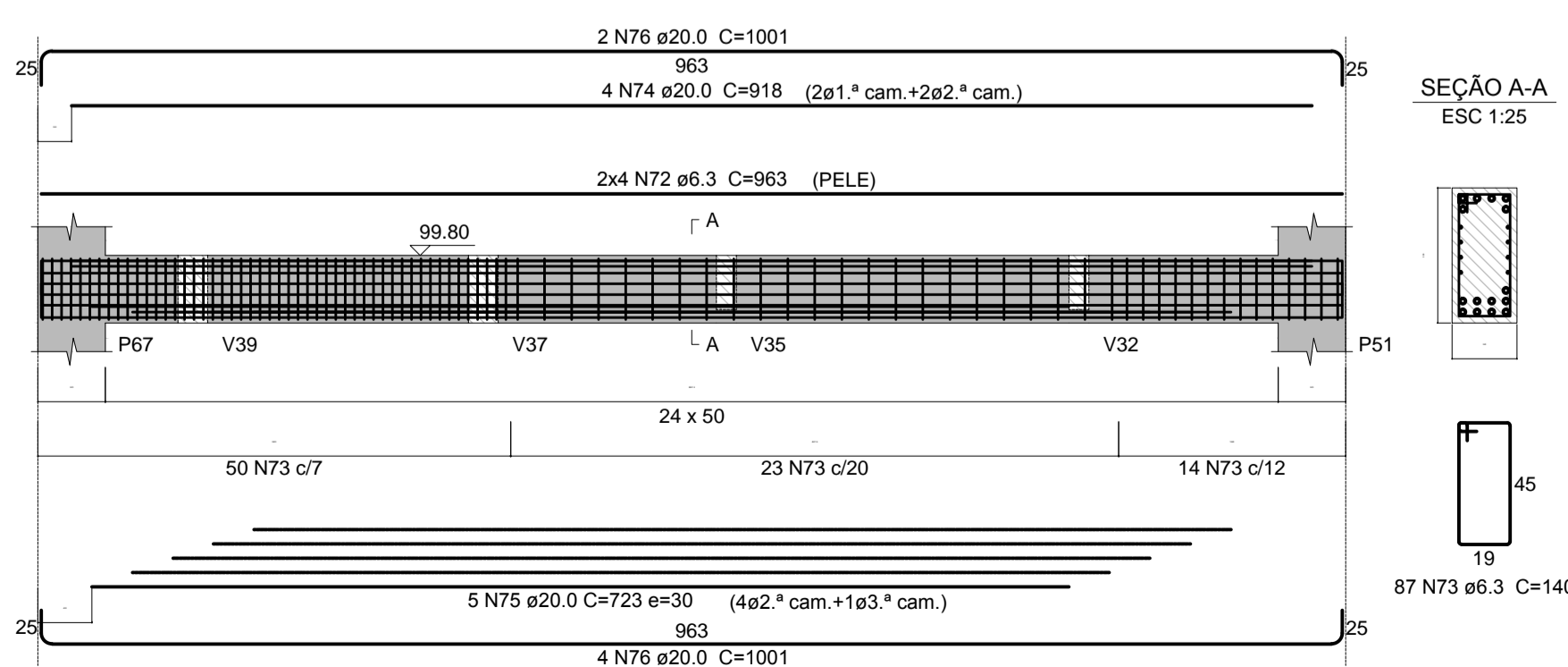
V70 (15 x 40)
ESC 1:50



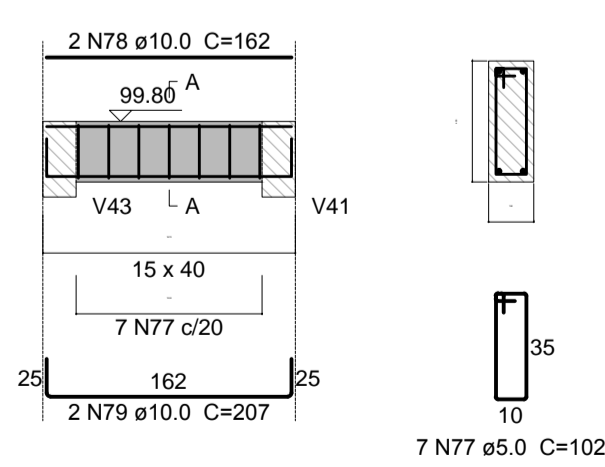
V71 (15 x 40)
ESC 1:50



V72 (24 x 50)
ESC 1:50



V80 (15 x 40)
ESC 1:50



Relação do aço

ELEMENTO	AÇO	N	DIAM (mm)	QUANT	C.UNIT (cm)	C.TOTAL (cm)
V53	CA60	1	5.0	21	136	2856
	CA50	2	10.0	2	440	880
	CA50	3	12.5	1	283	283
	CA50	4	12.5	2	484	968
V56	CA50	5	6.3	41	136	5576
	CA50	6	16.0	2	854	1708
	CA50	7	20.0	2	647	1294
	CA50	8	20.0	2	894	1788
V57	CA60	9	5.0	22	136	2992
	CA50	10	10.0	2	472	944
	CA50	11	12.5	2	310	620
	CA50	12	12.5	2	516	1032
V58	CA60	13	5.0	18	132	2376
	CA50	14	6.3	8	387	3096
	CA50	15	10.0	2	377	754
	CA50	16	10.0	2	422	844
V59	CA60	17	5.0	21	136	2856
	CA50	18	10.0	2	440	880
	CA50	19	12.5	1	283	283
	CA50	20	12.5	2	484	968
V60	CA60	21	5.0	22	136	2992
	CA50	22	10.0	2	521	1042
	CA50	23	12.5	1	335	335
	CA50	24	12.5	1	439	439
V61	CA60	25	12.5	2	524	1048
	CA60	26	5.0	21	136	2856
	CA50	27	12.5	4	501	2004
	CA50	28	12.5	1	240	240
V62	CA50	29	6.3	36	136	4896
	CA50	30	12.5	1	490	490
	CA50	31	12.5	3	849	2547
	CA50	32	20.0	1	314	314
V63	CA50	33	20.0	1	354	354
	CA50	34	20.0	1	359	359
	CA50	35	20.0	2	962	1924
	CA60	36	5.0	37	136	5032
V64	CA50	37	10.0	2	764	1528
	CA50	38	16.0	2	469	938
	CA50	39	16.0	1	663	663
	CA50	40	16.0	2	762	1524
V65	CA60	41	5.0	23	136	3128
	CA50	42	10.0	2	483	966
	CA50	43	12.5	1	301	301
	CA50	44	12.5	2	527	1054
V66	CA50	45	6.3	39	136	5304
	CA50	46	16.0	2	762	1524
	CA50	47	20.0	1	609	609
	CA50	48	20.0	1	671	671
V67	CA50	49	20.0	2	758	1516
	CA60	50	5.0	33	136	4488
	CA50	51	10.0	2	776	1552
	CA50	52	12.5	2	414	828
V68	CA50	53	12.5	2	756	1512
	CA60	54	5.0	13	102	1326
	CA50	55	10.0	2	285	570
	CA50	56	10.0	2	330	660
V69	CA60	57	5.0	16	132	2112
	CA50	58	6.3	8	317	2536
	CA50	59	10.0	2	356	712
	CA50	60	10.0	2	376	752
V70	CA60	61	5.0	39	136	5304
	CA50	62	6.3	8	708	5664
	CA50	63	10.0	2	698	1396
	CA50	64	12.5	2	501	1002
V71	CA50	65	12.5	2	742	1484
	CA60	66	5.0	13	102	1326
	CA50	67	10.0	2	285	570
	CA50	68	10.0	2	330	660
V72	CA60	69	5.0	13	102	1326
	CA50	70	10.0	2	285	570
	CA50	71	10.0	2	330	660
	CA50	72	6.3	8	963	7704
V80	CA50	73	6.3	87	140	12180
	CA50	74	20.0	4	918	3672
	CA50	75	20.0	5	723	3615
	CA50	76	20.0	6	1001	6006
V80	CA60	77	5.0	7	102	714
	CA50	78	10.0	2	162	324
	CA50	79	10.0	2	207	414

Resumo do aço

AÇO	DIAM (mm)	C.TOTAL (m)	QUANT + 5% (Barras)	UNIT	PESO + 5% (kg)
CA50	6.3	469.6	42	12 m	121
	10.0	166.8	15	12 m	108
	12.5	174.4	16	12 m	176
	16.0	63.6	6	12 m	105
CA60	5.0	221.3	20	12 m	573
	5.0	416.9	37	12 m	68
PESO TOTAL (kg)					
CA50					1083
CA60					68

Volume de concreto (C-25) = 10.51 m³
Área de forma = 119.27 m²

00 EMISSÃO INICIAL
REV. DESCRIÇÃO
RESPONSÁVEL DATA

Secretaria de Estado da Saúde
GOVERNO DO ESTADO
SÃO PAULO

HOSPITAL REGIONAL DR. LEOPOLDO BEVILACQUA
RUA DOS EXPEDIENTÁRIOS, 140 - PARQUERA-AGU - SP

GRUPO TÉCNICO DE EDIFICAÇÕES

PROJETO DE ESTRUTURAS
H-040 EST-06 00

Av. Dr. Enéas Carvalho de Aguiar, nº.188, 3º andar
050 Paulo-SP Cep 05403-000
Tel: (11)3066-8420 Fax: (11)3066-8482

Arq. ADHEMAR DIZIOLI FERNANDES
Arq. M. CRISTINA GOMES JOTTEN

TODOS OS DIREITOS RESERVADOS. PROIBIDA TODA A REPRODUÇÃO OU ALTERAÇÃO SEM PRÉVIA AUTORIZAÇÃO.