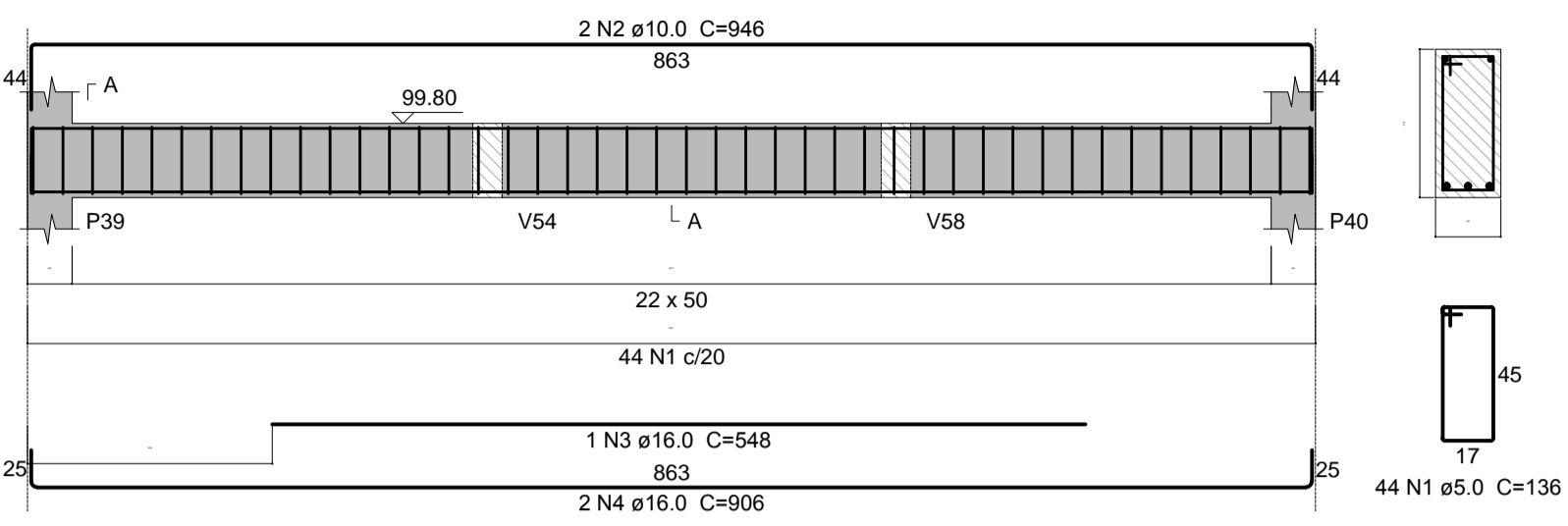
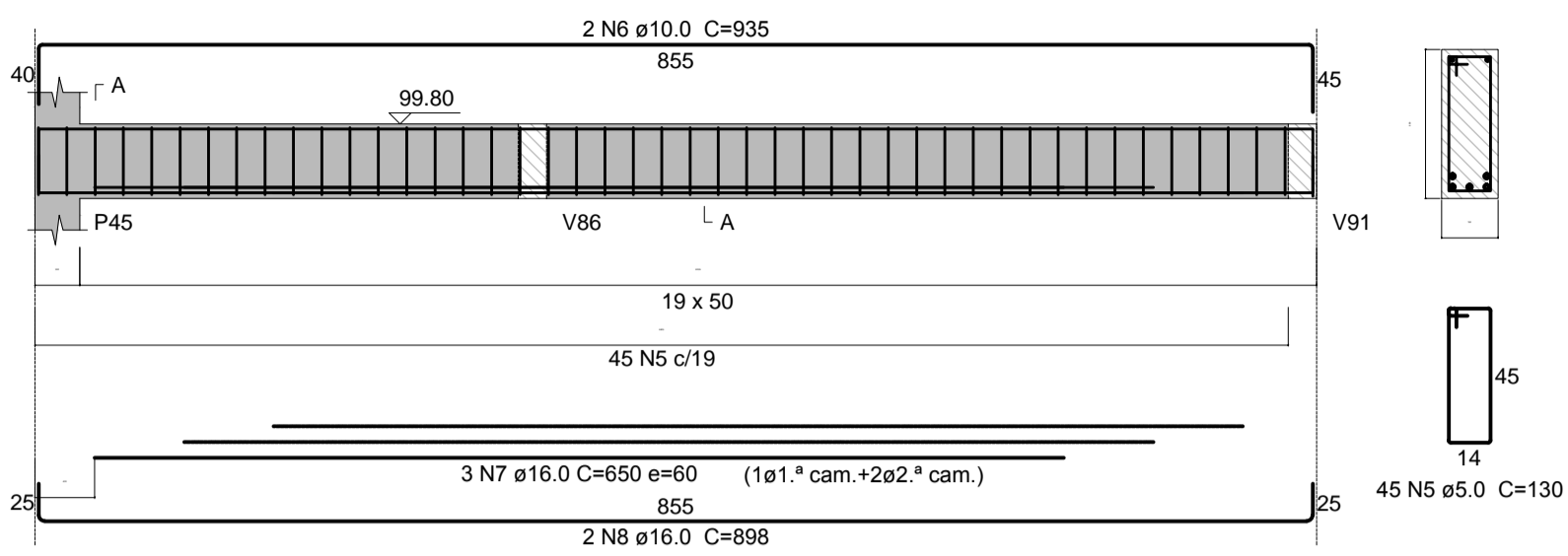


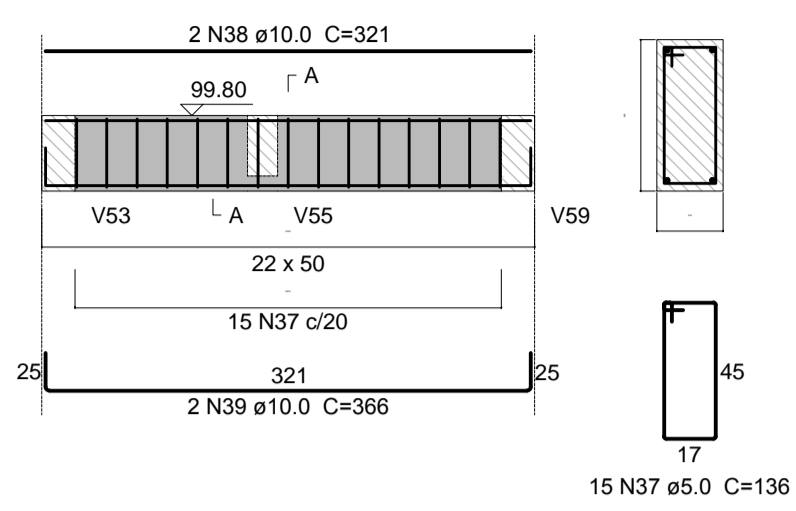
V12 (22 x 50)  
ESC 1:50



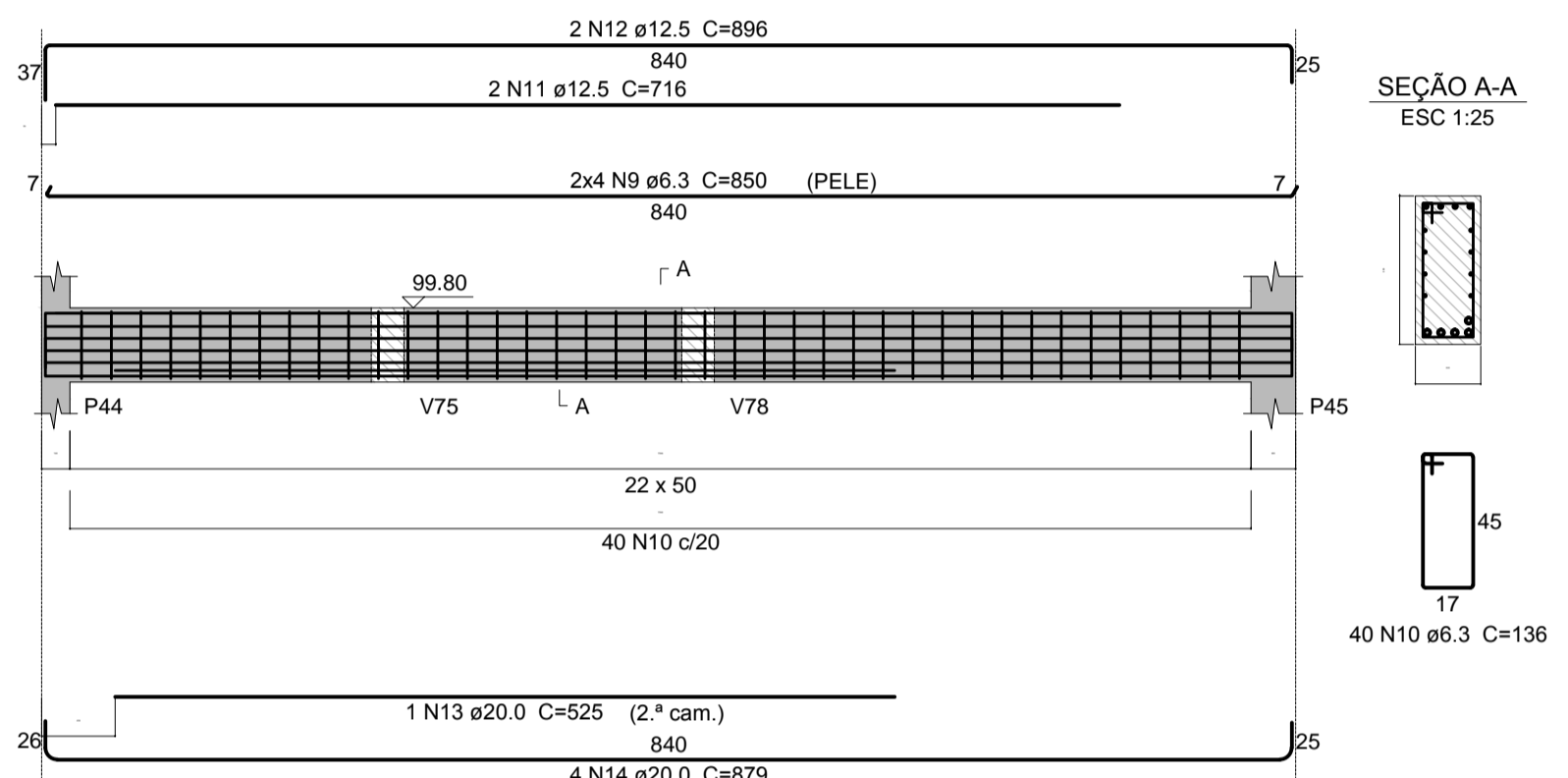
V13 (19 x 50)  
ESC 1:50



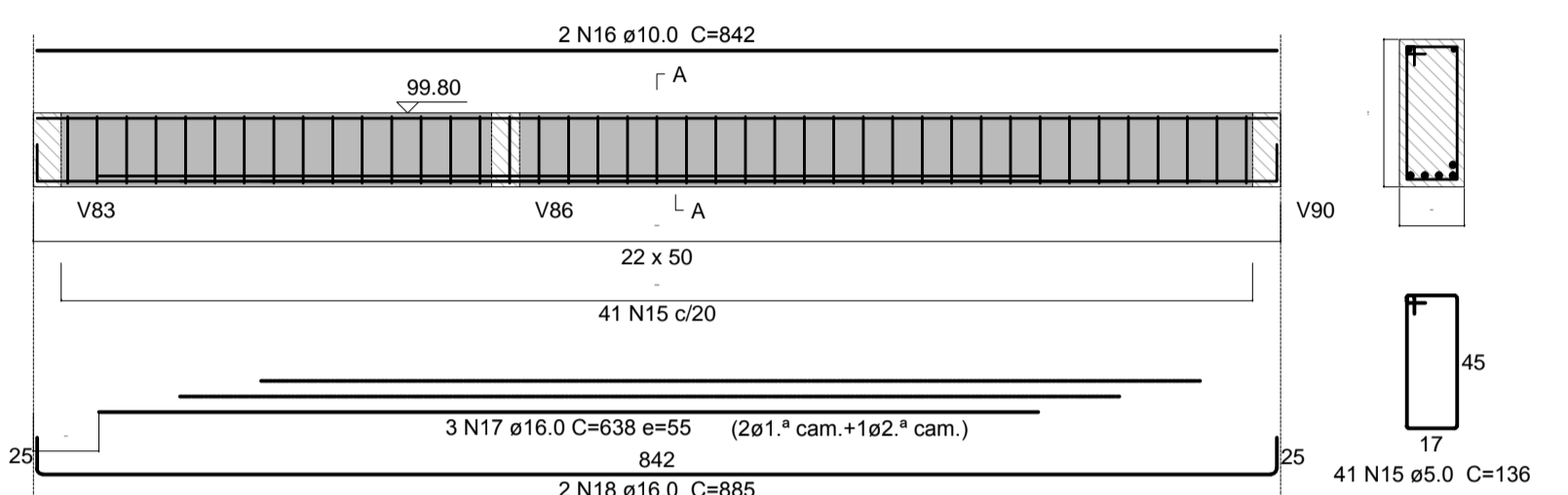
V25 (22 x 50)  
ESC 1:50



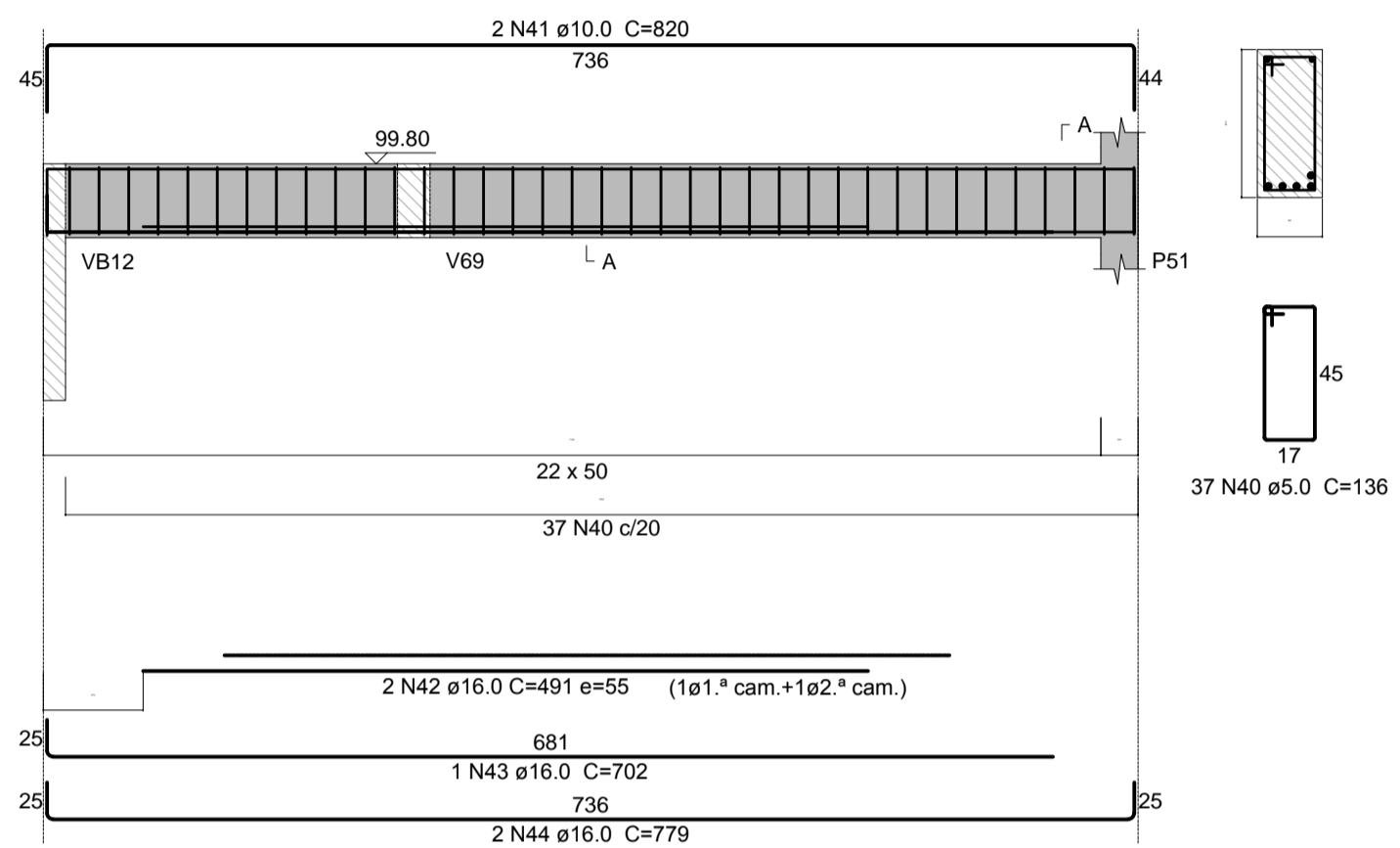
V14 (22 x 50)  
ESC 1:50



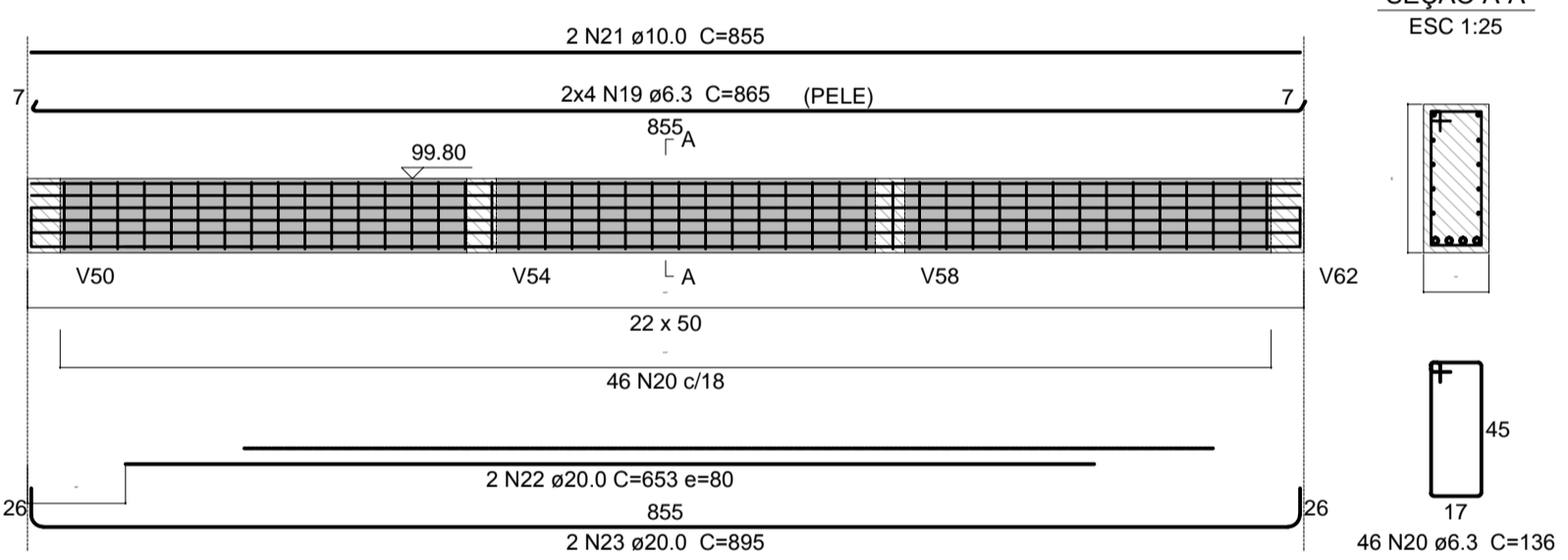
V16 (22 x 50)  
ESC 1:50



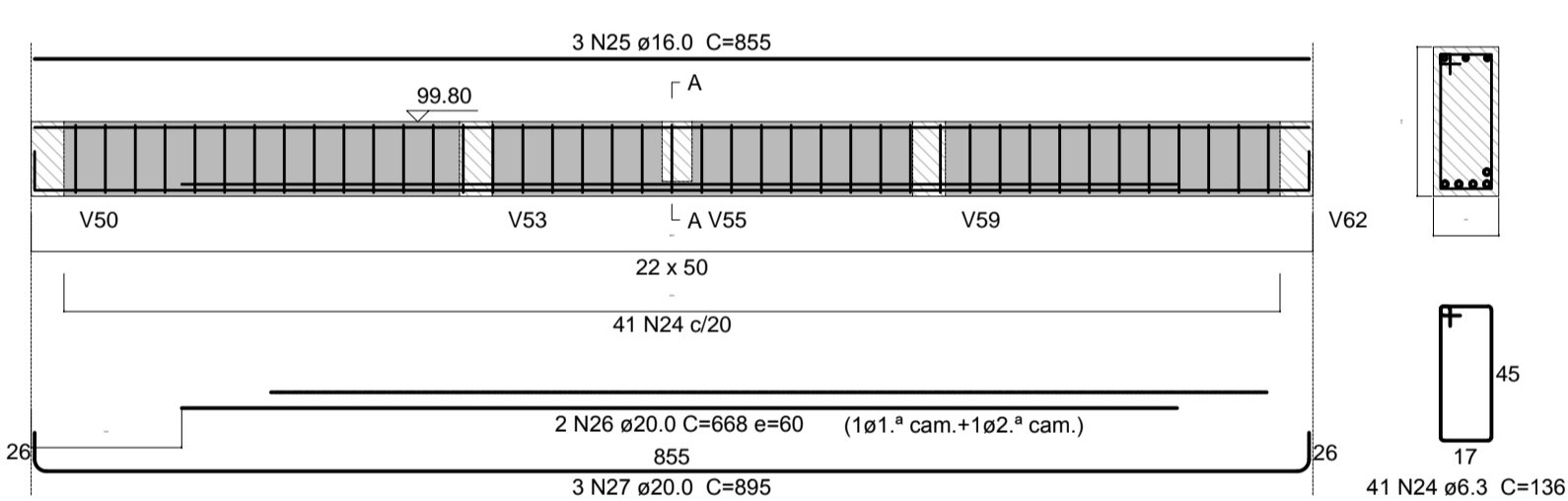
V26 (22 x 50)  
ESC 1:50



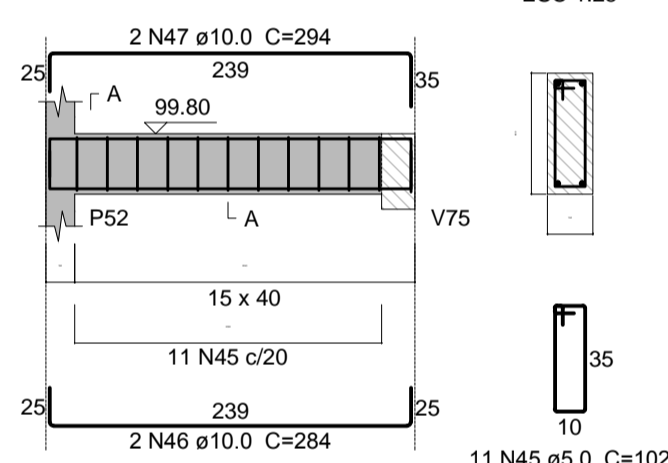
V17 (22 x 50)  
ESC 1:50



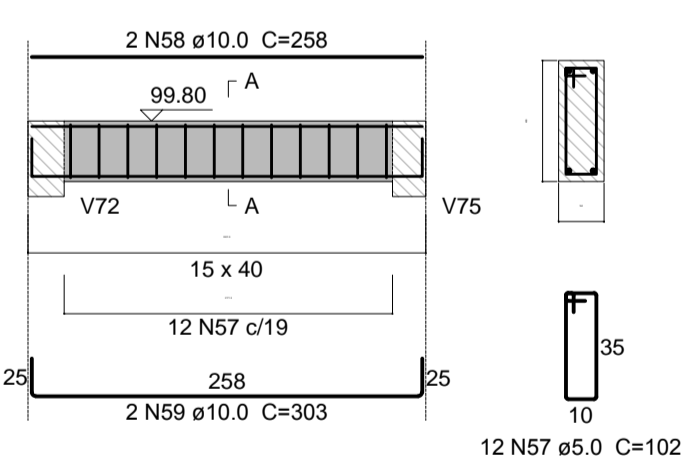
V20 (22 x 50)  
ESC 1:50



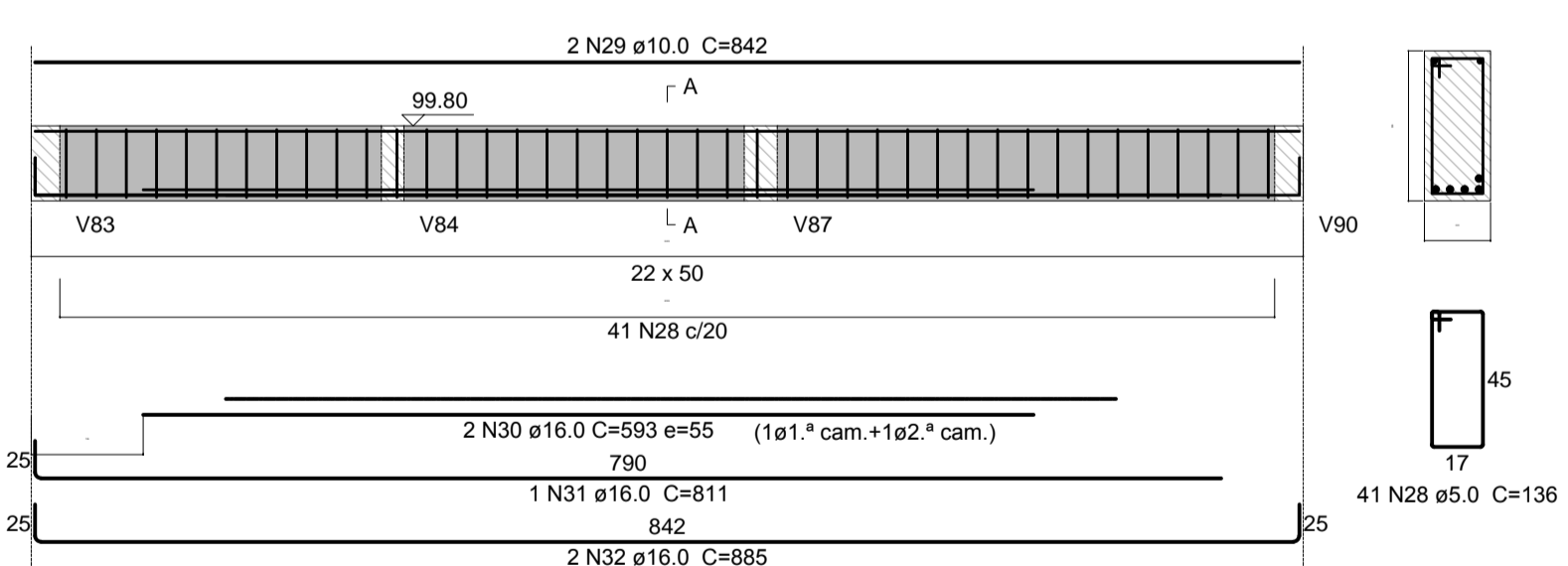
V28 (15 x 40)  
ESC 1:50



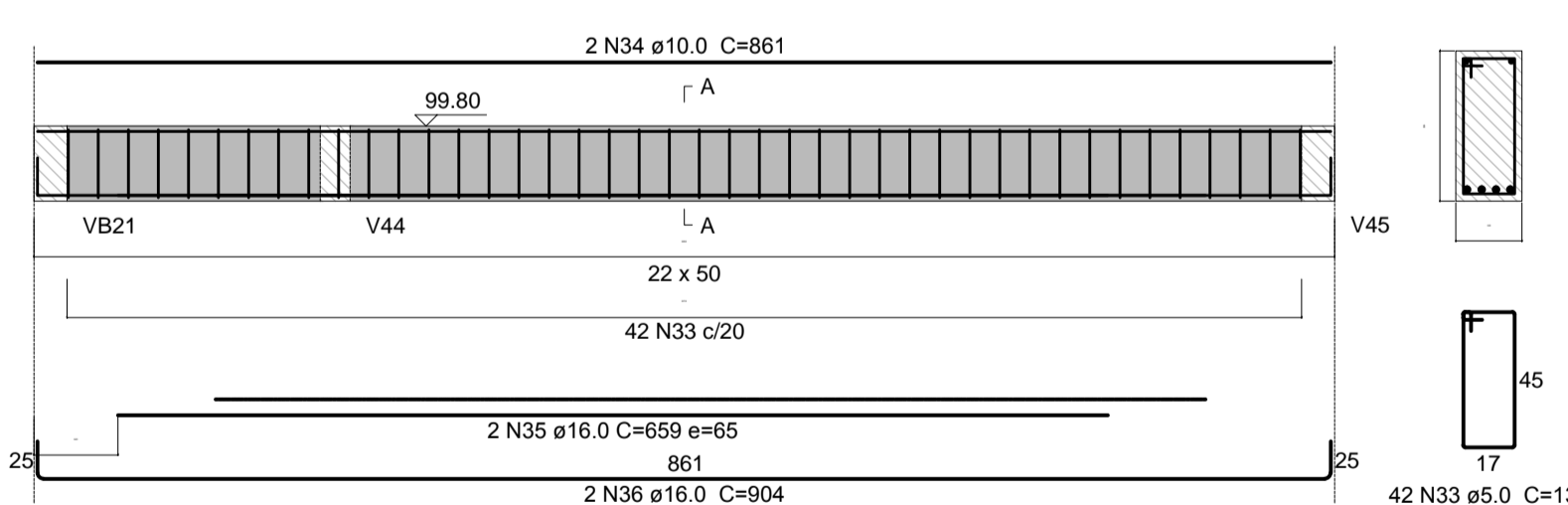
V32 (15 x 40)  
ESC 1:50



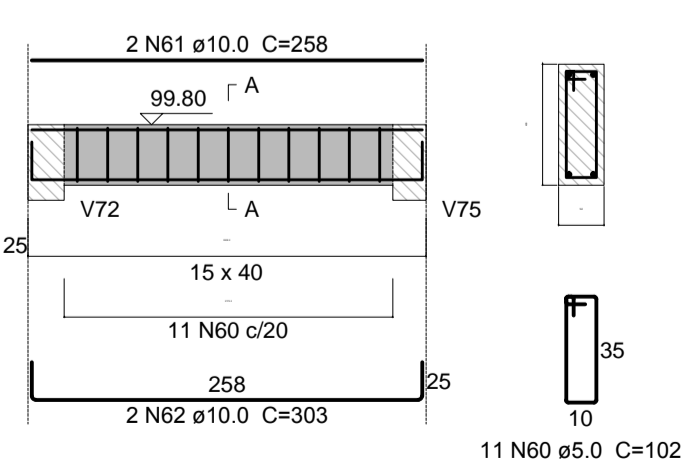
V21 (22 x 50)  
ESC 1:50



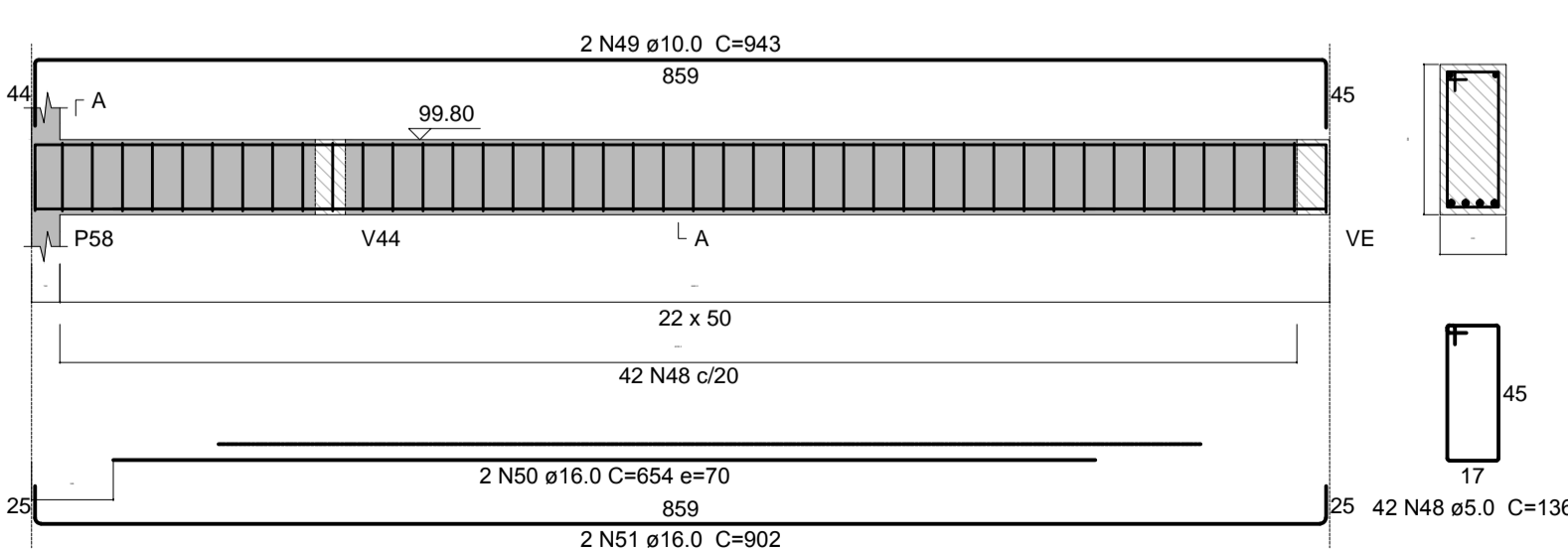
V23 (22 x 50)  
ESC 1:50



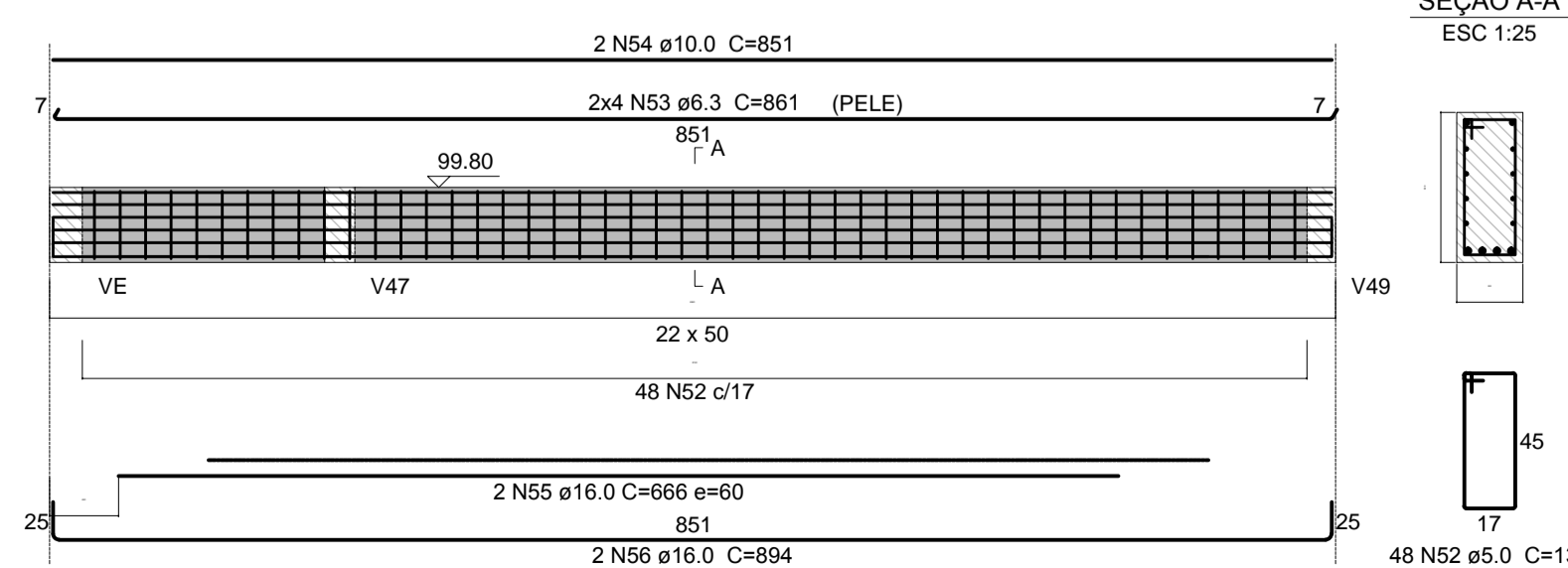
V35 (15 x 40)  
ESC 1:50



V29 (22 x 50)  
ESC 1:50



V30 (22 x 50)  
ESC 1:50



Relação do aço

ELEMENTO	AÇO	N	DIAM (mm)	QUANT	C.UNIT (cm)	C.TOTAL (cm)
V12	CA60	1	5.0	44	136	5984
	CA50	2	10.0	2	946	1892
	CA50	3	16.0	1	548	548
V13	CA50	4	16.0	2	906	1812
	CA60	5	5.0	45	130	5850
	CA50	6	10.0	2	935	1870
	CA50	7	16.0	3	650	1950
	CA50	8	16.0	2	898	1796
	CA50	9	6.3	8	850	6800
	CA50	10	6.3	40	136	5440
V14	CA50	11	12.5	2	716	1432
	CA50	12	12.5	2	896	1792
	CA50	13	20.0	1	525	525
	CA50	14	20.0	4	879	3516
	CA60	15	5.0	41	136	5576
	CA50	16	10.0	2	842	1684
	CA50	17	16.0	3	638	1914
	CA50	18	16.0	2	885	1770
	CA50	19	6.3	8	865	6920
	CA50	20	6.3	46	136	6256
	CA50	21	10.0	2	855	1710
	CA50	22	20.0	2	653	1306
V16	CA50	23	20.0	2	895	1790
	CA50	24	6.3	41	136	5576
	CA50	25	16.0	3	855	2565
	CA50	26	20.0	2	668	1336
	CA50	27	20.0	3	895	2685
	CA60	28	5.0	41	136	5576
	CA50	29	10.0	2	842	1684
	CA50	30	16.0	2	593	1186
	CA50	31	16.0	1	811	811
	CA50	32	16.0	2	885	1770
V17	CA60	33	5.0	42	136	5712
	CA50	34	10.0	2	861	1722
	CA50	35	16.0	2	659	1318
	CA50	36	16.0	2	904	1808
	CA60	37	5.0	15	136	2040
V20	CA50	38	10.0	2	321	642
	CA50	39	10.0	2	366	732
	CA60	40	5.0	37	136	5032
	CA50	41	10.0	2	820	1640
	CA50	42	16.0	2	491	982
	CA50	43	16.0	1	702	702
	CA50	44	16.0	2	779	1558
	CA60	45	5.0	11	102	1122
	CA50	46	10.0	2	284	568
	CA50	47	10.0	2	294	588
V21	CA60	48	5.0	42	136	5712
	CA50	49	10.0	2	943	1886
	CA50	50	16.0	2	654	1308
	CA50	51	16.0	2	802	1604
	CA60	52	5.0	48	136	6528
	CA50	53	6.3	8	861	6888
	CA50	54	10.0	2	851	1702
	CA50	55	16.0	2	666	1332
	CA50	56	16.0	2	894	1788
	CA60	57	5.0	12	102	1224
V23	CA50	58	10.0	2	258	516
	CA50	59	10.0	2	303	606
	CA60	60	5.0	11	102	1122
	CA50	61	10.0	2	258	516
	CA50	62	10.0	2	303	606
	CA50	63	10.0	2	303	606

Resumo do aço

AÇO	DIAM (mm)	C.TOTAL (m)	QUANT + 5 % (Barras)	UNIT	PESO + 5 % (kg)
CA50	6.3	378.8	34	12 m	97
	10.0	205.7	18	12 m	133
	12.5	32.3	3	12 m	33
	16.0	287.3	26	12 m	476
	20.0	111.6	10	12 m	289
CA60	5.0	514.8	46	12 m	83
PESO TOTAL (kg)					
CA50					1028
CA60					83

Volume de concreto (C-25) = 10.93 m³  
Área de forma = 124.63 m²

00 EMISSÃO INICIAL  
REV. DESCRIÇÃO

RESPONSÁVEL DATA

GOVERNO DO ESTADO  
SÃO PAULO

HOSPITAL REGIONAL DR. LEOPOLDO BEVILACQUA  
RUA DOS EXPEDICIONÁRIOS, 140 - PARIQUERA-AGUA - SP

GRUPO TÉCNICO DE EDIFICAÇÕES

PROJETO DE ESTRUTURAS

H-040 EST-03 00

Av. Dr. Enéas Carvalho de Aguiar, nº.188, 3º andar  
São Paulo-SP Cep 05403-000  
Tel: (11)3066-8420 Fax: (11)3066-8482

Arq. ADHEMAR DIZIOLI FERNANDES  
Arq. CAMILO CHINGOTTE

Arq. M. CRISTINA GOMES JOTTEN

TODOS OS DIREITOS RESERVADOS. PROIBIDA TODA A REPRODUÇÃO OU ALTERAÇÃO SEM PRÉVIA AUTORIZAÇÃO.