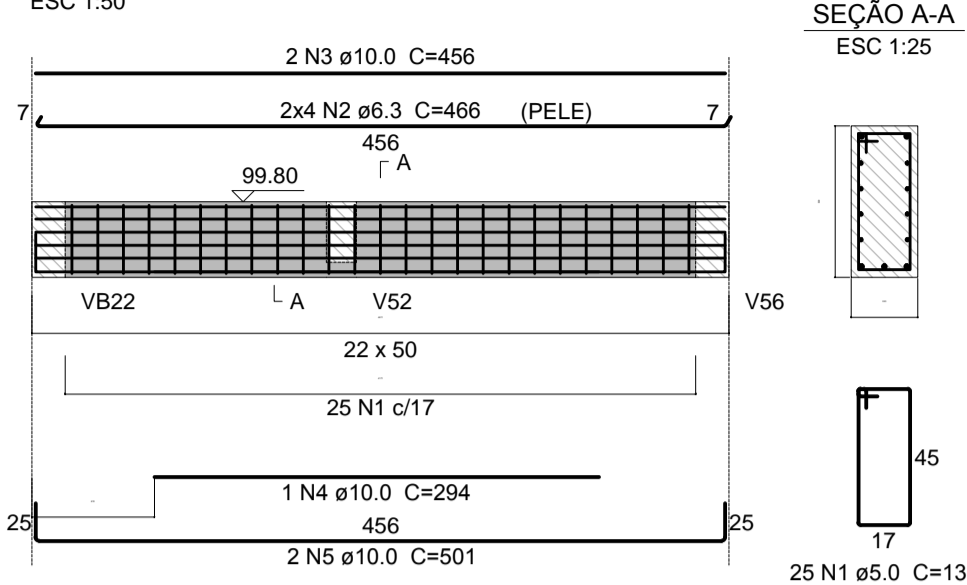
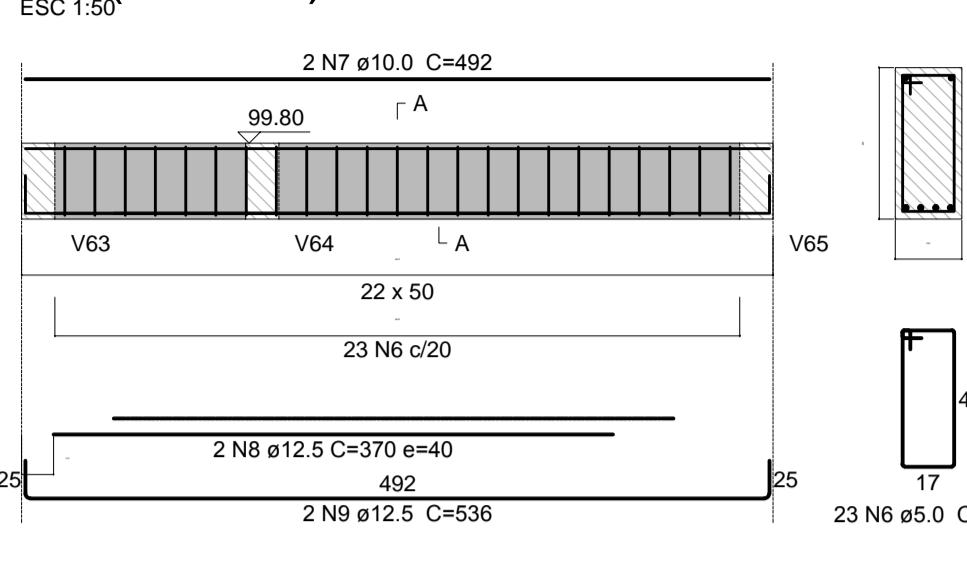


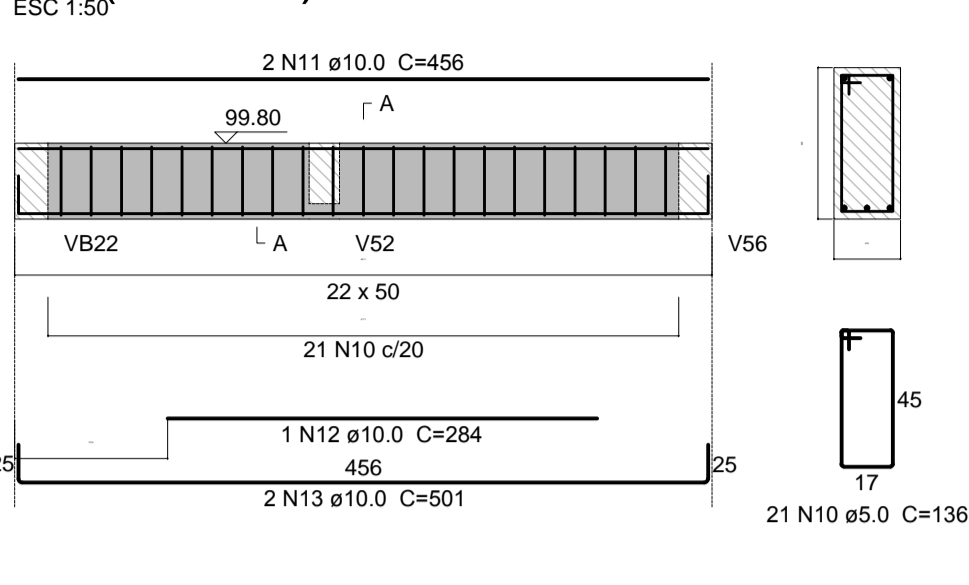
**V1 (22 x 50)**



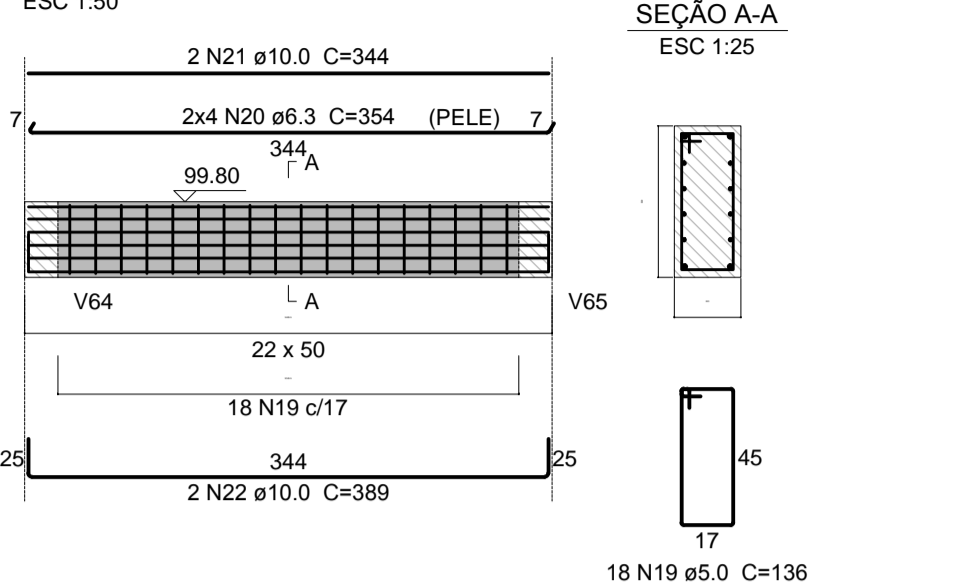
**V2 (22 x 50)**



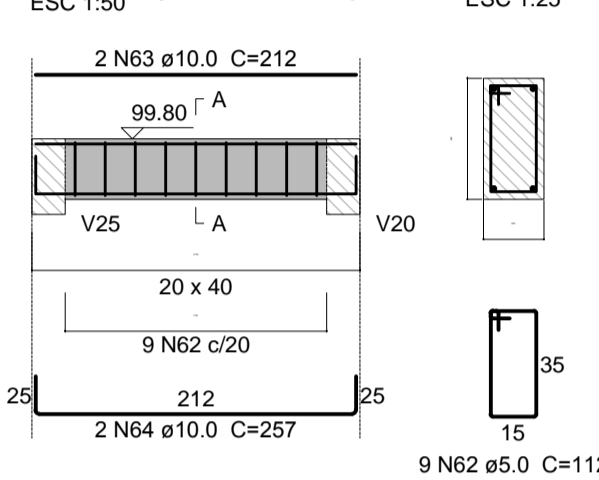
**V3 (22 x 50)**



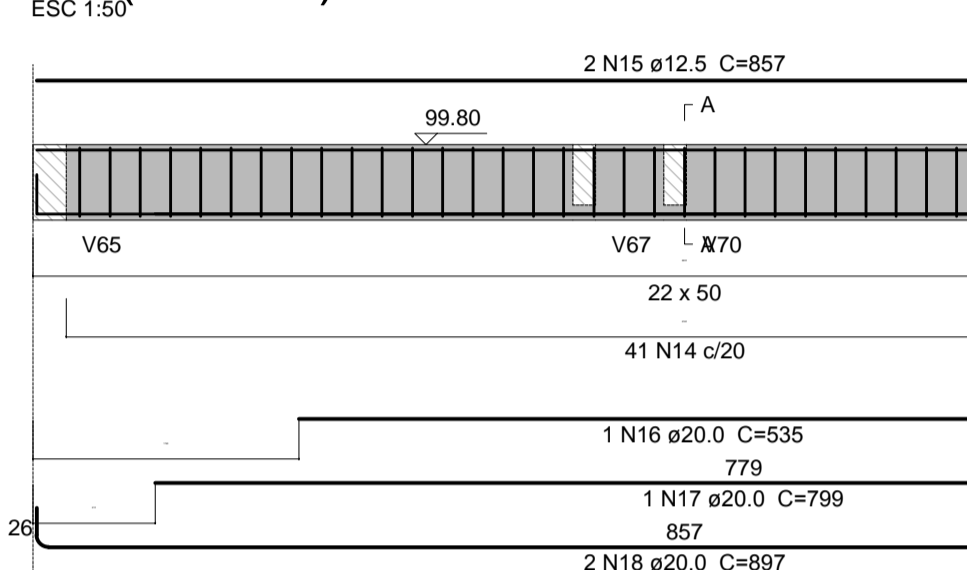
**V5 (22 x 50)**



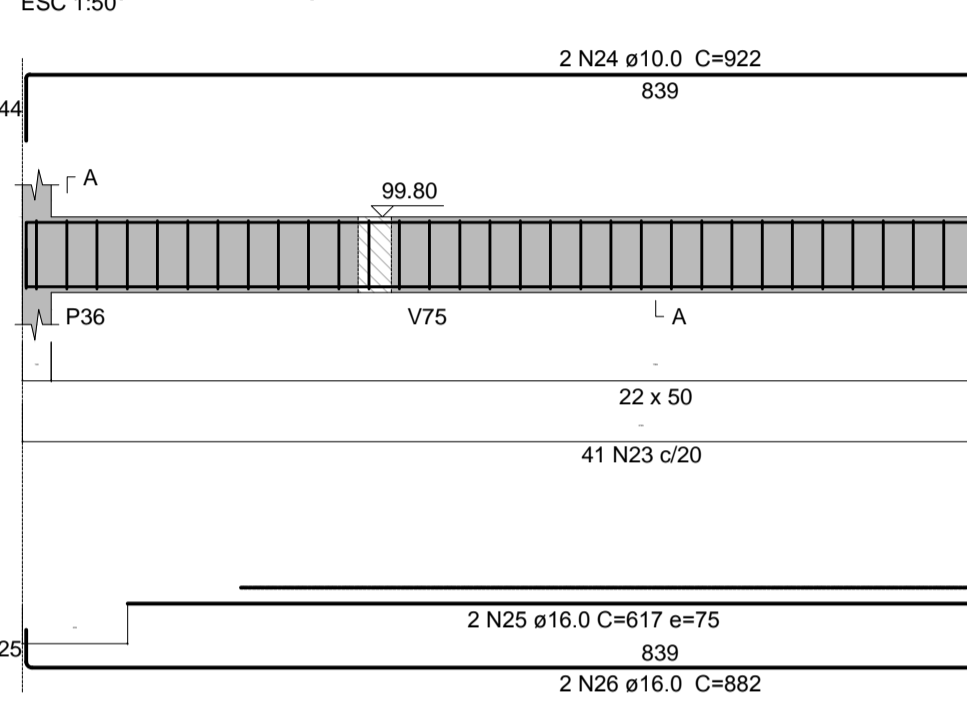
**V55 (20 x 40)**



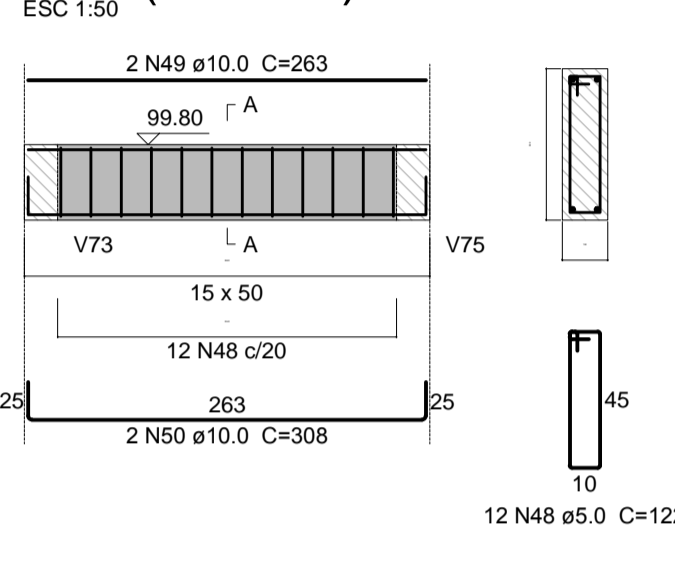
**V4 (22 x 50)**



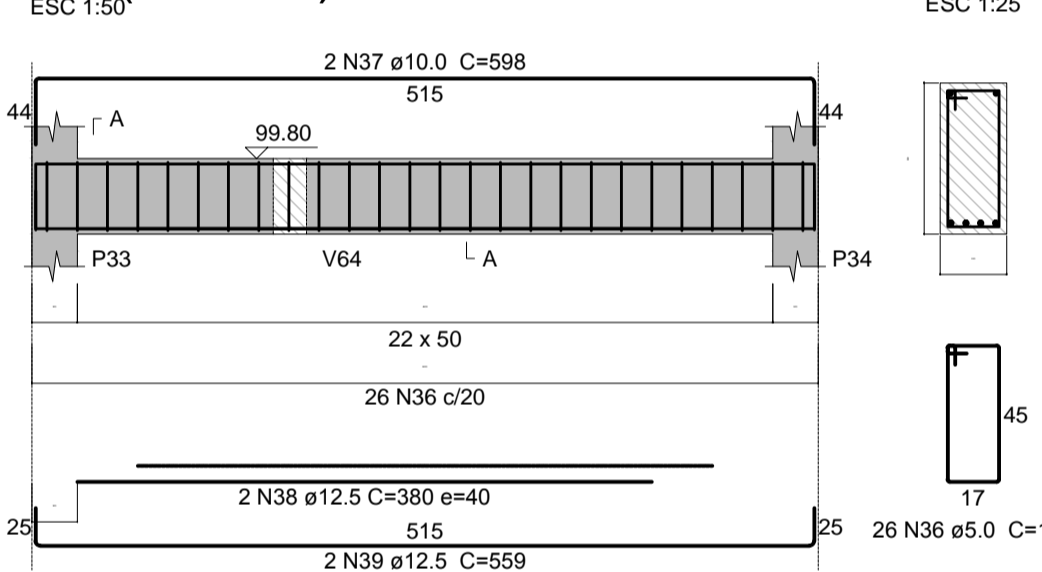
**V6 (22 x 50)**



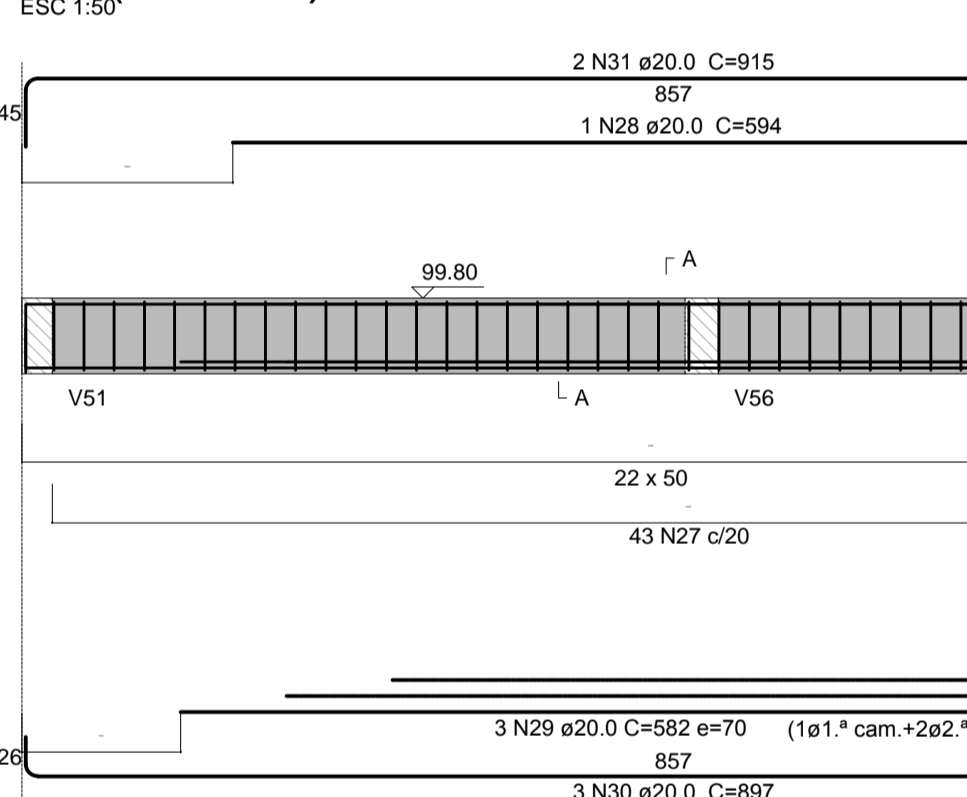
**V15 (15 x 50)**



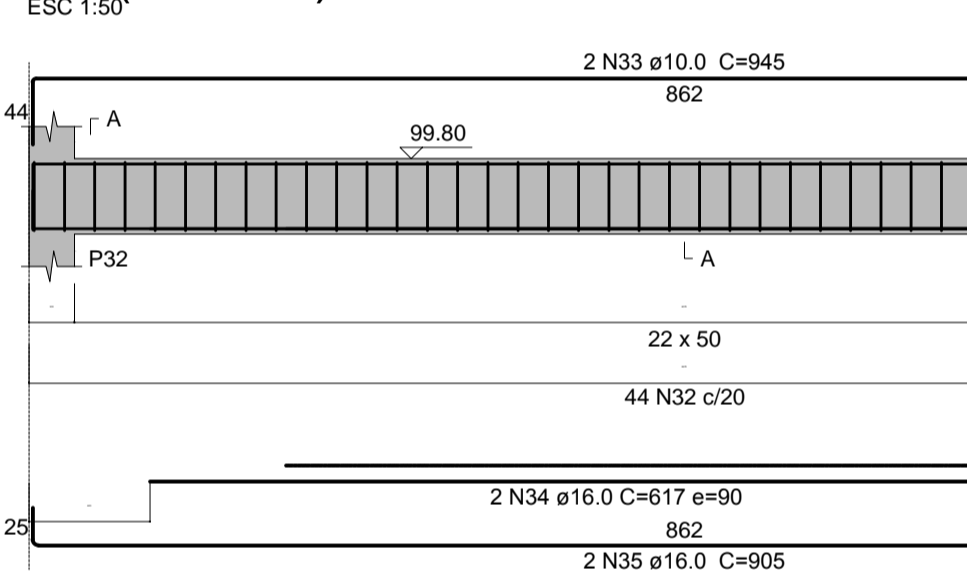
**V9 (22 x 50)**



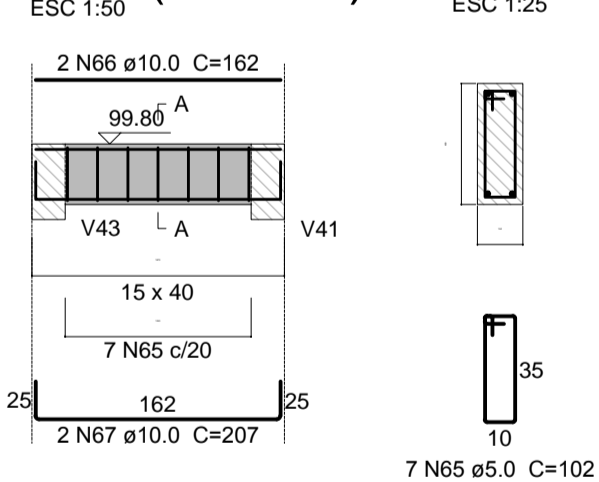
**V7 (22 x 50)**



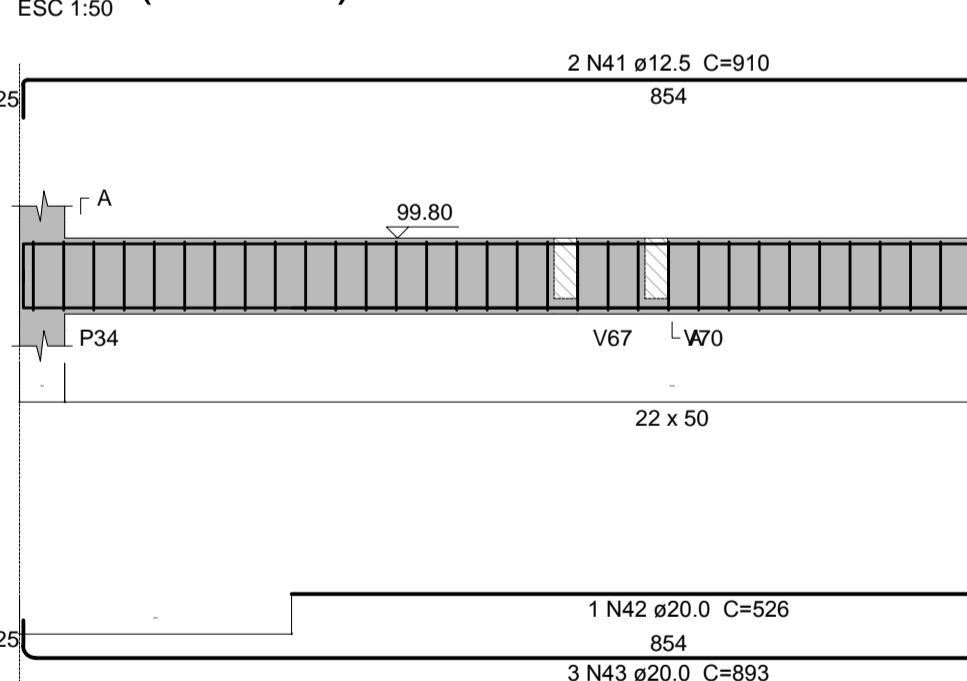
**V8 (22 x 50)**



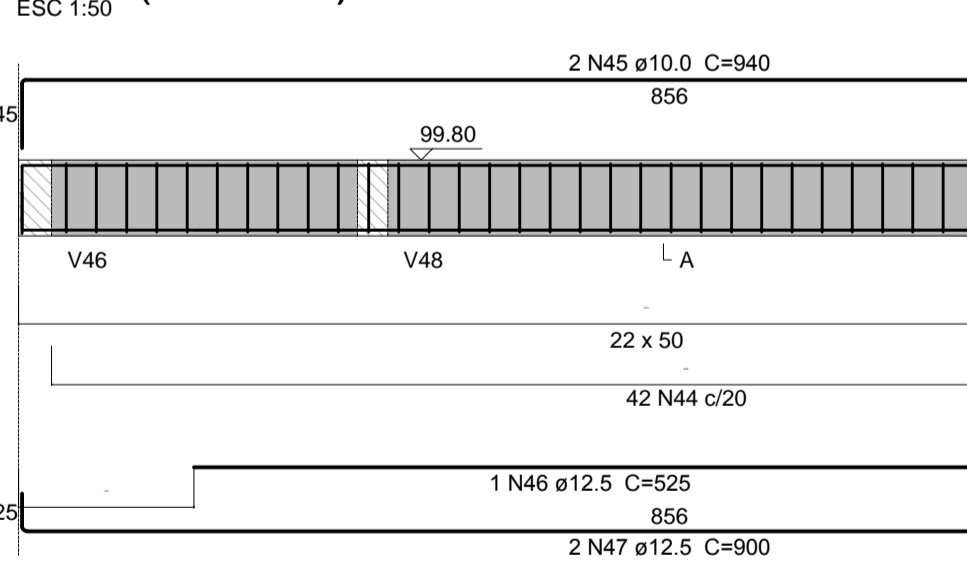
**V79 (15 x 40)**



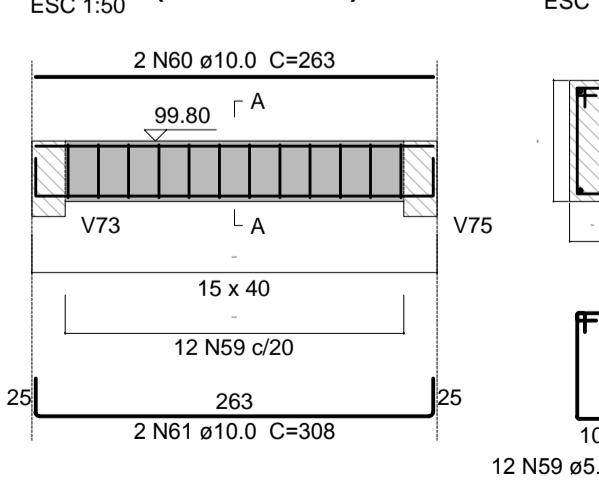
**V10 (22 x 50)**



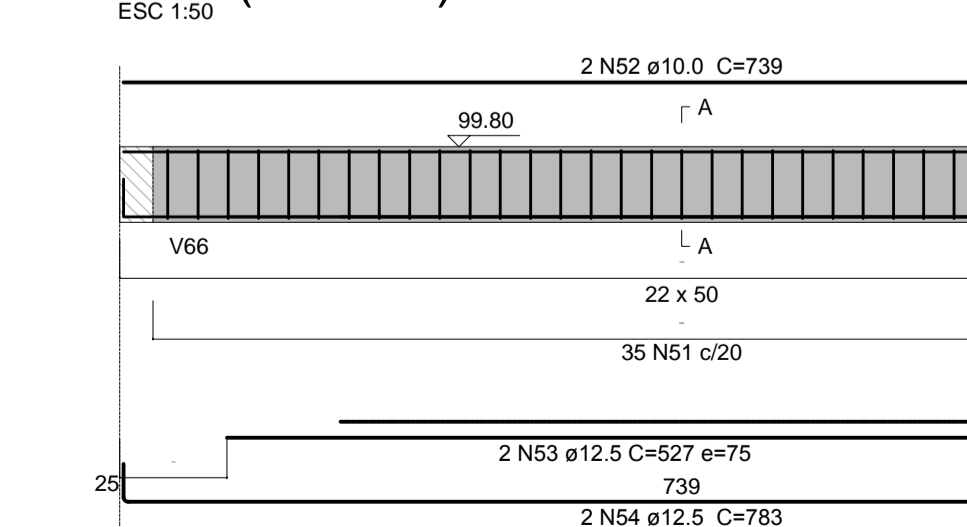
**V11 (22 x 50)**



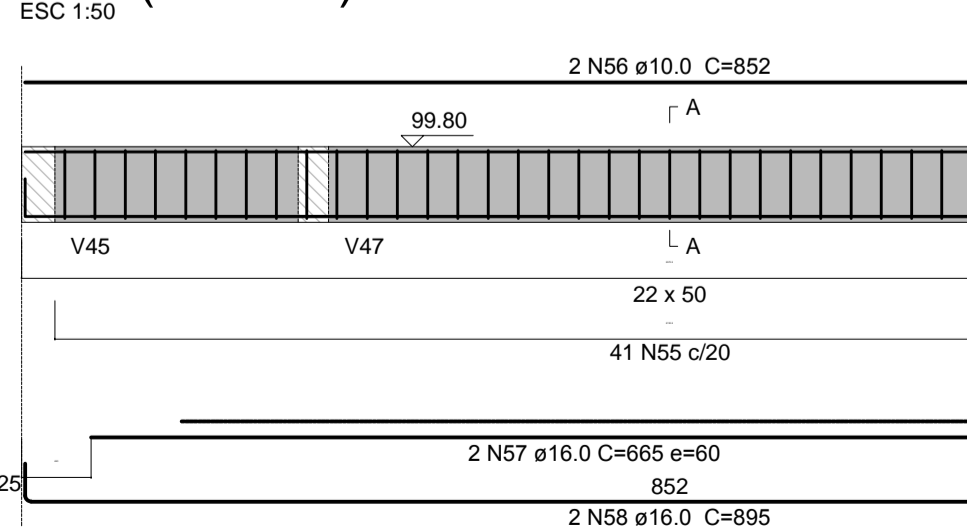
**V22 (15 x 40)**



**V18 (22 x 50)**



**V19 (22 x 50)**



**Relação do aço**

ELEMENTO	AÇO	N	DIAM (mm)	QUANT	C.UNIT (cm)	C.TOTAL (cm)
V1	CA60	1	5.0	25	136	3400
	CA50	2	6.3	8	466	3728
	CA50	3	10.0	2	456	912
	CA50	4	10.0	1	294	294
	CA50	5	10.0	2	501	1002
V2	CA60	6	5.0	23	136	3128
	CA50	7	10.0	2	492	984
	CA50	8	12.5	2	370	740
	CA50	9	12.5	2	536	1072
	CA50	10	5.0	21	136	2856
V3	CA50	11	10.0	2	456	912
	CA50	12	10.0	1	284	284
	CA50	13	10.0	2	501	1002
	CA50	14	6.3	41	136	5576
	CA50	15	12.5	2	857	1714
V4	CA50	16	20.0	1	535	535
	CA50	17	20.0	1	799	799
	CA50	18	20.0	2	897	1794
	CA60	19	5.0	18	136	2448
	CA50	20	6.3	8	354	2832
V5	CA50	21	10.0	2	344	688
	CA50	22	10.0	2	389	778
	CA60	23	5.0	41	136	5576
	CA50	24	10.0	2	922	1844
	CA50	25	16.0	2	617	1234
V6	CA50	26	16.0	2	882	1764
	CA50	27	6.3	43	136	5848
	CA50	28	20.0	1	594	594
	CA50	29	20.0	3	582	1746
	CA50	30	20.0	3	897	2691
V7	CA50	31	20.0	2	915	1830
	CA60	32	5.0	44	136	5984
	CA50	33	10.0	2	945	1890
	CA50	34	16.0	2	617	1234
	CA50	35	16.0	2	905	1810
V8	CA60	36	5.0	26	136	3536
	CA50	37	10.0	2	598	1196
	CA50	38	12.5	2	380	760
	CA50	39	12.5	2	559	1118
	CA50	40	6.3	43	136	5848
V9	CA50	41	12.5	2	910	1820
	CA50	42	20.0	1	526	526
	CA50	43	20.0	3	893	2679
	CA60	44	5.0	42	136	5712
	CA50	45	10.0	2	940	1880
V10	CA50	46	12.5	1	525	525
	CA50	47	12.5	2	900	1800
	CA60	48	5.0	12	122	1464
	CA50	49	10.0	2	263	526
	CA50	50	10.0	2	308	616
V11	CA60	51	5.0	35	136	4760
	CA50	52	10.0	2	739	1478
	CA50	53	12.5	2	527	1054
	CA50	54	12.5	2	783	1566
	CA60	55	5.0	41	136	5576
V12	CA50	56	10.0	2	852	1704
	CA50	57	16.0	2	665	1330
	CA50	58	16.0	2	895	1790
	CA60	59	5.0	12	102	1224
	CA50	60	10.0	2	263	526
V13	CA50	61	10.0	2	308	616
	CA60	62	5.0	9	112	1008
	CA50	63	10.0	2	212	424
	CA50	64	10.0	2	257	514
	CA60	65	5.0	7	102	714
V14	CA50	66	10.0	2	162	324
	CA50	67	10.0	2	207	414

**Resumo do aço**

AÇO	DIAM (mm)	C.TOTAL (m)	QUANT + 5% (Barras)	UNIT	PESO + 5% (kg)
CA50	6.3	238.4	21	12 m	61
	10.0	208.1	19	12 m	135
	12.5	121.7	11	12 m	123
	16.0	91.7	9	12 m	152
	20.0	132	12	12 m	342
CA60	5.0	473.9	42	12 m	77
<b>PESO TOTAL (kg)</b>					
CA50		813			
CA60		77			

Volume de concreto (C-25) = 10.58 m³  
Área de forma = 119.71 m²

00 EMISSÃO INICIAL  
REV. DESCRIÇÃO RESPONSÁVEL DATA

**Secretaria de Estado da Saúde**

**GOVERNO DO ESTADO SÃO PAULO**

**HOSPITAL REGIONAL DR. LEOPOLDO BEVILACQUA**  
RUA DOS EXPEDICIONÁRIOS, 140 - PARQUEIRA-AÇU - SP

**GRUPO TÉCNICO DE EDIFICAÇÕES**

**PROJETO DE ESTRUTURAS**

H-040 EST-02 00

Av. Dr. Enéas Carvalho de Aguiar, nº.188, 3º andar  
São Paulo-SP Cep 05403-000  
Tel. (11)3066-8420 Fax (11)3066-8482

Arq. ADHEMAR DIZIOLI FERNANDES  
Arq. M. CRISTINA GOMES JOTTEN

TODOS OS DIREITOS RESERVADOS. PROIBIDA TODA A REPRODUÇÃO OU ALTERAÇÃO SEM PRÉVIA AUTORIZAÇÃO.