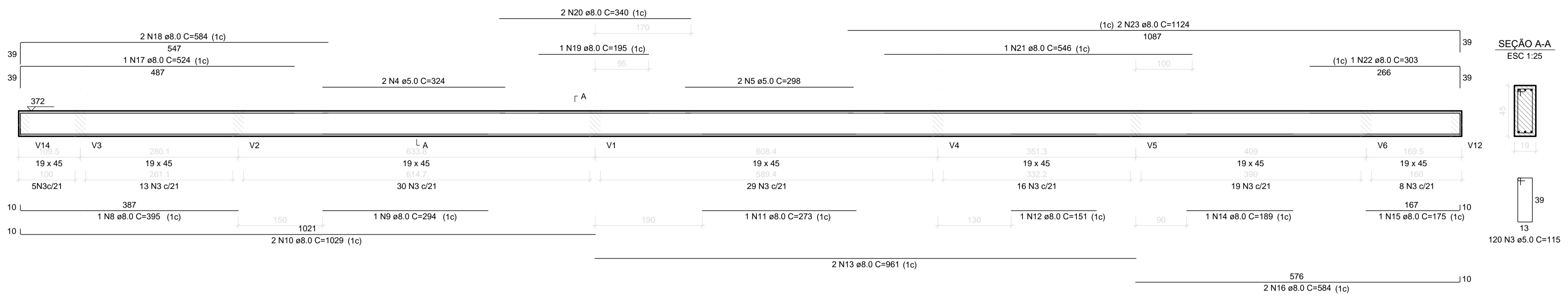
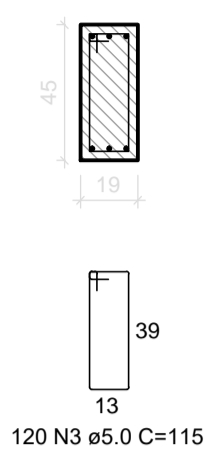


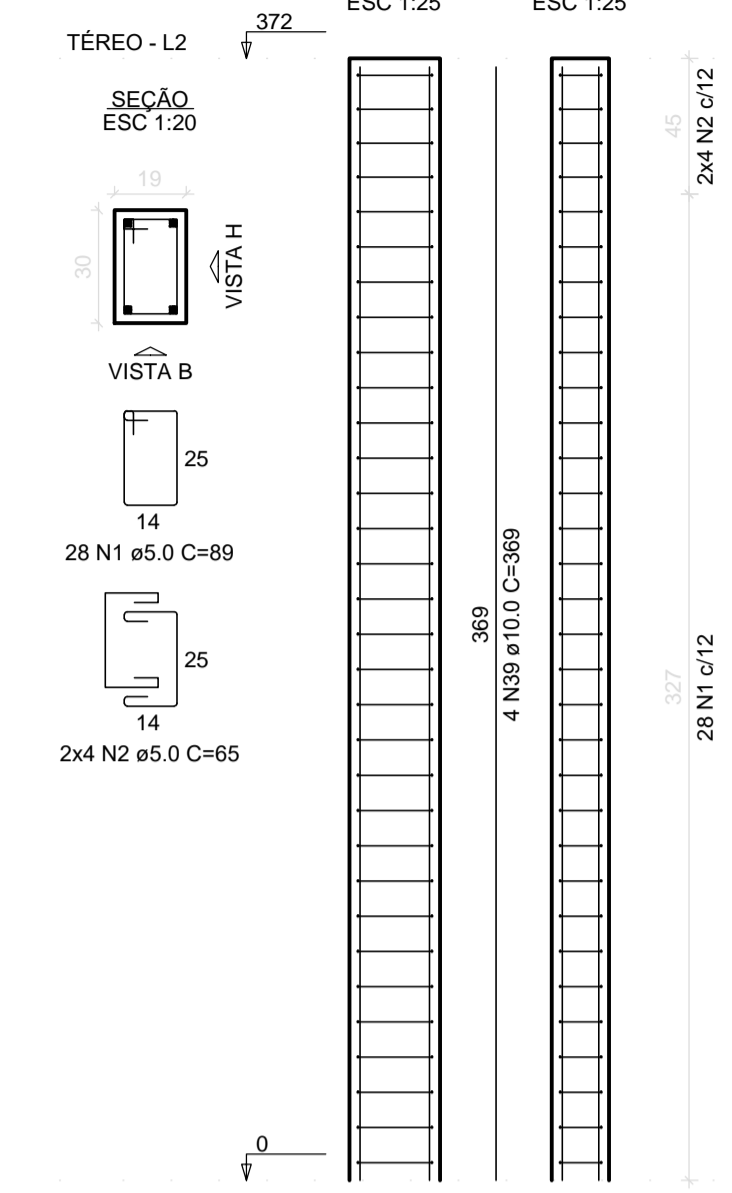
V13
ESC 1:50



SEÇÃO A-A
ESC 1:25



P1=P2=P3=P4=P5=P6=
=P7=P8=P9=P10=P11=
=P12=P13=P14=P15=
=P16=P17=P22=P23=
=P24=P25=P26



RELAÇÃO DO AÇO

ACO	N	DIAM (mm)	QUANT	C UNIT (cm)	C TOTAL (cm)
CA60	1	5.0	616	89	54824
	2	5.0	176	65	11440
	3	5.0	315	115	36225
	4	5.0	2	324	648
	5	5.0	4	298	1192
	6	5.0	2	334	668
	7	5.0	2	338	676
	8	8.0	1	395	395
	9	8.0	1	394	394
	10	8.0	4	1009	4116
	11	8.0	1	273	273
	12	8.0	1	151	151
	13	8.0	2	861	1022
	14	8.0	1	189	189
	15	8.0	2	175	350
	16	8.0	2	584	1168
	17	8.0	2	524	1048
	18	8.0	2	584	1168
	19	8.0	2	195	390
	20	8.0	2	340	680
	21	8.0	1	546	546
	22	8.0	2	303	606
	23	8.0	4	1124	4496
	24	8.0	1	395	395
	25	8.0	1	309	309
	26	8.0	1	278	278
	27	8.0	1	353	353
	28	8.0	2	961	1922
	29	8.0	1	194	194
	30	8.0	2	684	1368
	31	8.0	1	523	523
	32	8.0	2	563	1126
	33	8.0	2	350	700
	34	8.0	1	547	547
	35	8.0	2	334	668
	36	8.0	2	649	1298
	37	8.0	1	141	141
	38	8.0	2	358	716
	39	10.0	88	369	32472
	40	10.0	2	608	1216
	41	10.0	1	195	195
	42	10.0	2	567	1134
	43	12.5	1	230	230
	44	12.5	2	891	1782

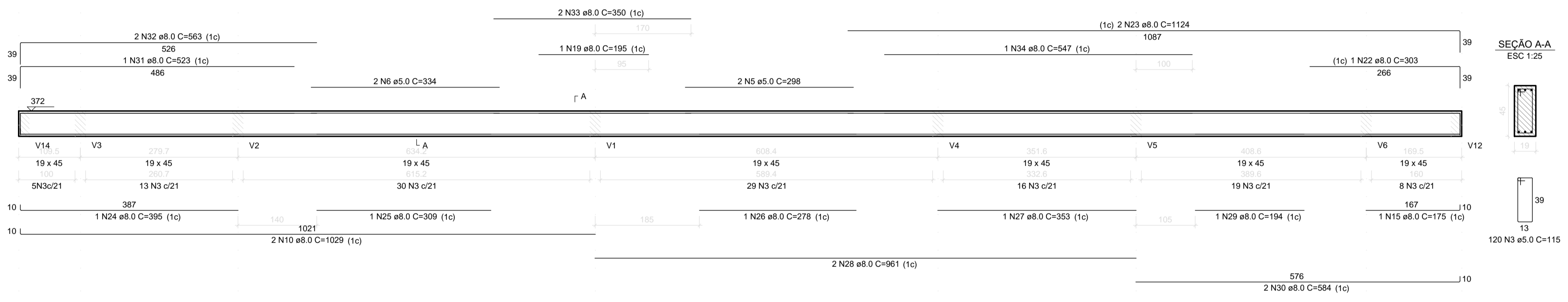
RESUMO DO AÇO

ACO	DIAM (mm)	C TOTAL (m)	PESO + 10% (kg)
CA50	8.0	276.1	119.8
	10.0	350.2	237.5
	12.5	20.7	22
CA60	5.0	1054.7	178.8

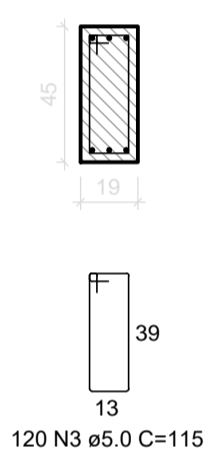
PESO TOTAL (kg)
CA50 379.3
CA60 178.8

Volume de concreto (C-25) = 10.42 m³
Área de forma = 153.62 m²

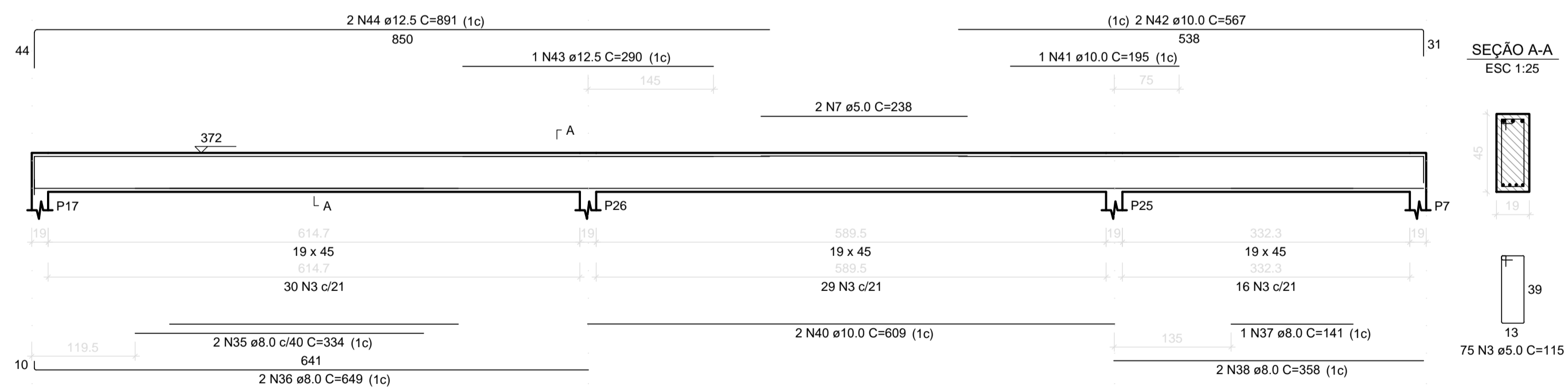
V15
ESC 1:50



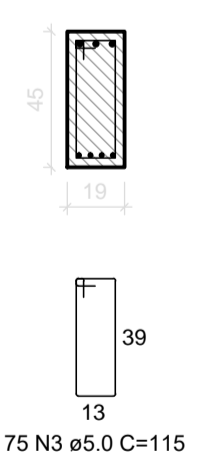
SEÇÃO A-A
ESC 1:25



V16
ESC 1:50



SEÇÃO A-A
ESC 1:25



- NOTAS
1. CONFERIR MEDIDAS NO LOCAL
 2. MEDIDAS EM METRO, EXCETO ONDE INDICADO

construção e projeto:

REV.	DESCRIÇÃO	RESPONSÁVEL	DATA

SÃO PAULO GOVERNO DO ESTADO
Secretaria de Saúde

GRUPO TÉCNICO DE EDIFICAÇÕES

PROJETO EXECUTIVO DE ESTRUTURA
H-016 08/10

Av. Dr. Enéas Carvalho de Aguiar, nº.188, 3º andar
São Paulo-SP Cep 05403-000
Tel. (11)3066 8420 Fax (11)3066 8482

Eng. YUKIO KITAMURA
Arq. CÂMLIO CHINGOTTE