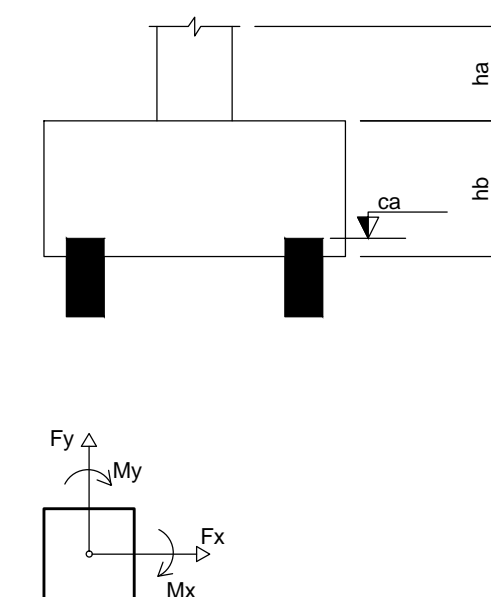
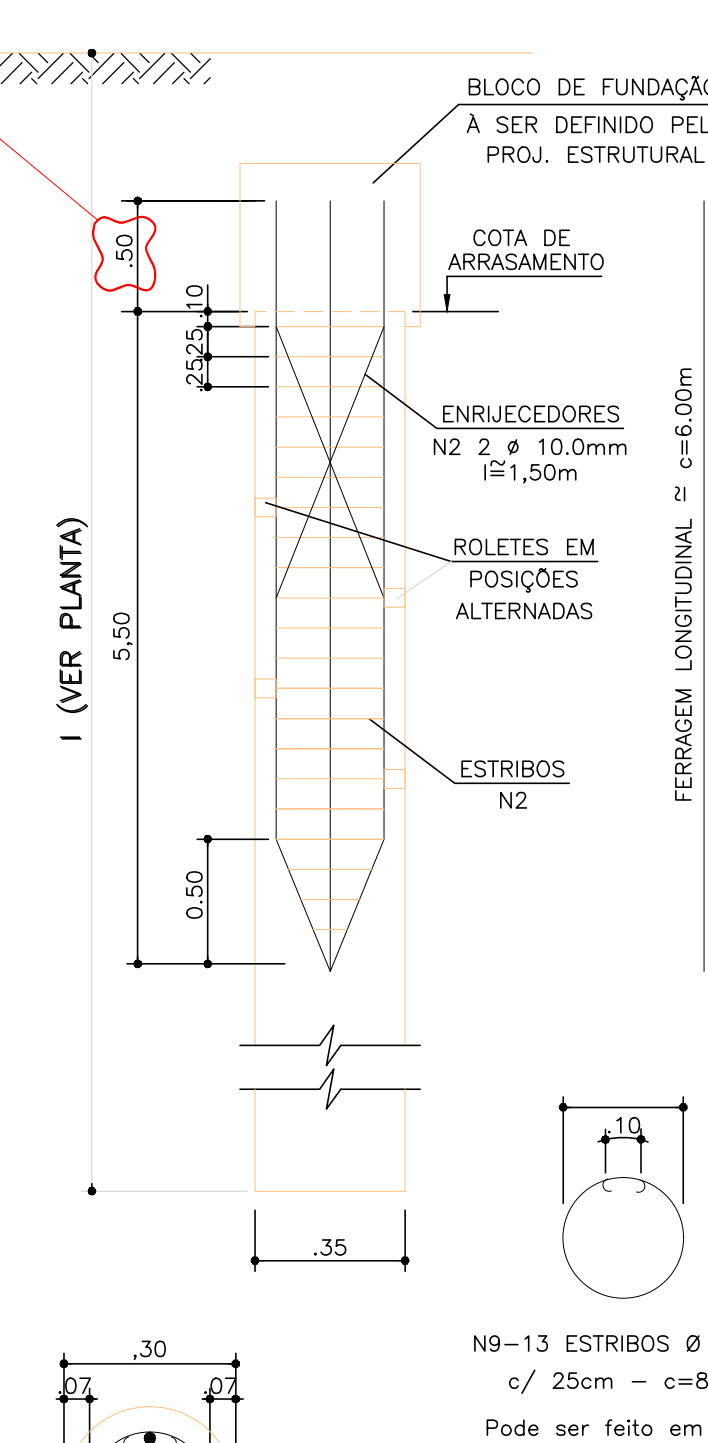


Estacas			
Simbologia	Nome	d (cm)	Quantidade
	E25	25.00	14
	HE 30	30.00	22



DETALHE PARA ARMAÇÃO DAS ESTACAS
TIPO HÉLICE CONTÍNUA 30 cm (16X)
PROFUNDIDADE MINIMA 10,00 METROS

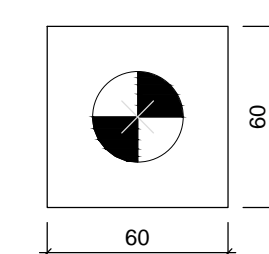
CONFIRMAR COM
PROJETISTA ESTRUTURAL



Planta de localização

escala 1:50

B1=B2=B3=B4=B5=B6=B7
B8=B9=B10=B11=B12
B13=B14=B15=B16=B17
B22=B23=B24=B25=B26 (1xHE 30)



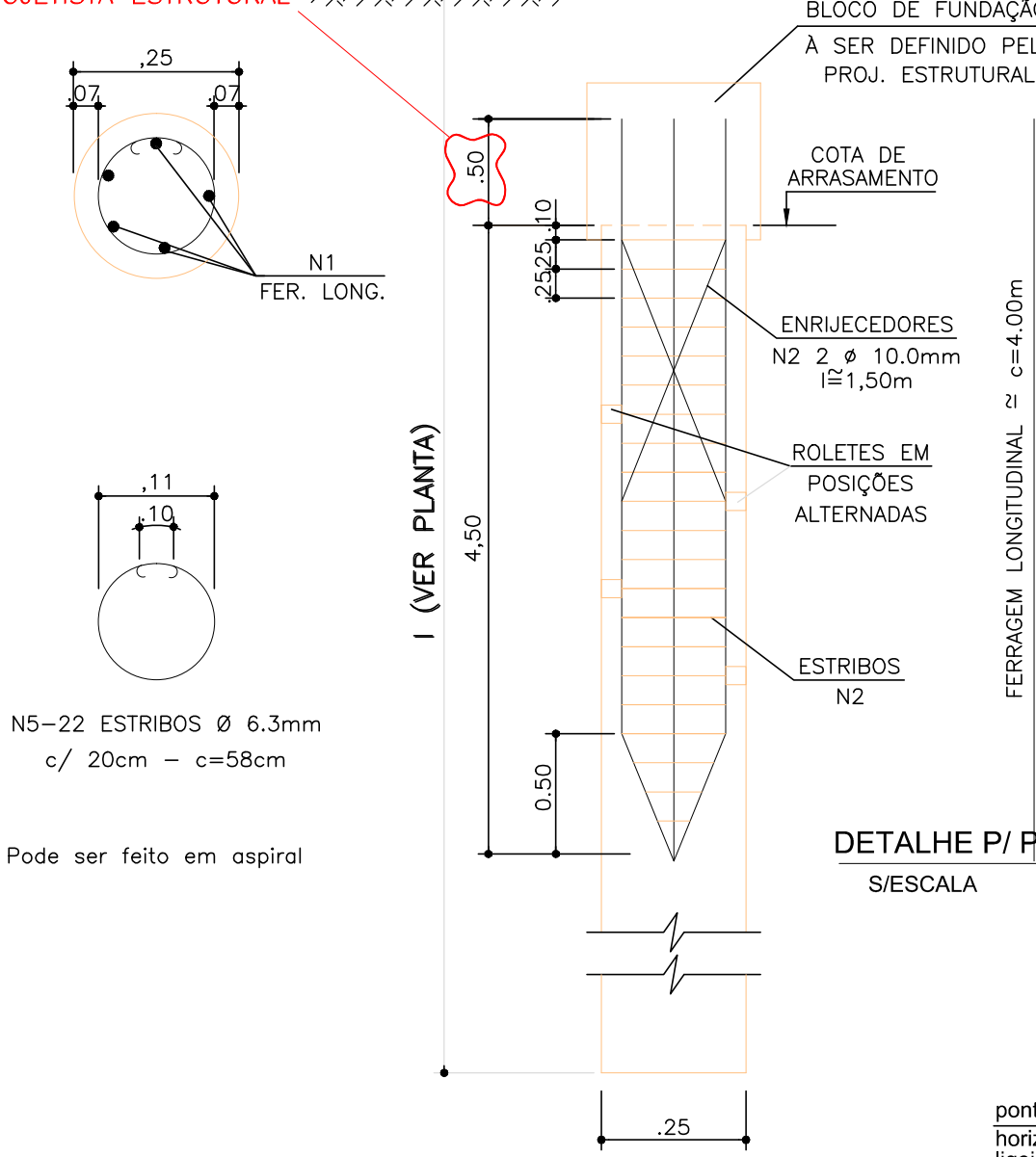
Legenda dos blocos

escala 1:25

N9-13 ESTRIBOS Ø 6.3mm
c/ 25cm - c=89cm
Pode ser feito em espiral

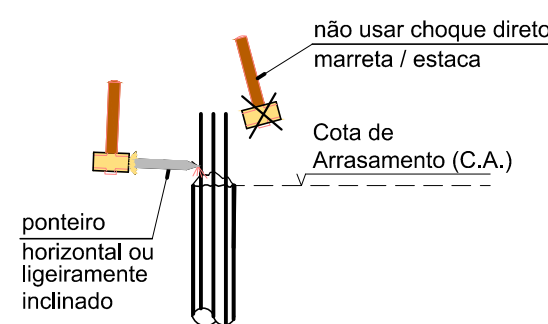
DETALHE PARA ARMAÇÃO DAS ESTACAS
TIPO HÉLICE CONTÍNUA 25 cm (14X)
PROFUNDIDADE MINIMA 5,00 METROS

CONFIRMAR COM
PROJETISTA ESTRUTURAL



DETALHE P/ PREPARO DA CABEÇA DAS ESTACAS

1/5 ESCALA



NOTAS

- CONFIRMAR MEDIDAS NO LOCAL
- MEDIDAS EM METRO, EXCETO ONDE INDICADO

Nome	Seção (cm)	X (cm)	Y (cm)	Carga Máx. (tf)	Carga Mín. (tf)	Pilar				Fundação				Bloco						
						Mx Máximo (kgf.m)	My Máximo (kgf.m)	Fx Máximo (tf)	Fy Máximo (tf)	Lado B (cm)	Lado H (cm)	h0 / ha (cm)	h1 / hb (cm)	ne	Estaca	ca (cm)	Base tub. (cm)			
E1	-	0.00	0.00	1.5	0.9	100	0	100	0	0.1	0.0	0.1	0.0	-	-	-	-	1	E25	0
E2	-	512.00	0.00	1.7	1.1	100	0	0	0	0.0	0.0	0.1	0.0	-	-	-	-	1	E25	0
E3	-	1024.00	0.00	1.6	1.0	100	0	100	0	0.1	0.0	0.1	0.0	-	-	-	-	1	E25	0
E4	-	1536.00	0.00	1.6	1.0	100	0	100	0	0.0	0.0	0.1	0.0	-	-	-	-	1	E25	0
E5	-	2048.00	0.00	1.7	1.1	100	0	100	0	0.1	0.0	0.1	0.0	-	-	-	-	1	E25	0
E6	-	2561.50	0.00	1.5	0.9	100	0	0	0	0.0	0.0	0.1	0.0	-	-	-	-	1	E25	0
E7	-	2561.50	480.56	1.6	1.0	100	0	100	0	0.1	0.0	0.0	0.0	-	-	-	-	1	E25	0
E8	-	2561.50	871.42	1.4	0.8	100	0	0	0	0.0	0.0	0.0	0.0	-	-	-	-	1	E25	0
E9	-	2048.00	871.42	1.7	1.1	0	0	100	0	0.1	0.0	0.1	0.0	-	-	-	-	1	E25	0
E10	-	1536.00	871.42	1.6	1.0	100	0	100	0	0.0	0.0	0.1	0.0	-	-	-	-	1	E25	0
E11	-	1024.00	871.42	1.6	1.0	100	0	100	0	0.1	0.0	0.1	0.0	-	-	-	-	1	E25	0
E12	-	512.00	871.42	1.7	1.1	0	0	0	0	0.0	0.0	0.1	0.0	-	-	-	-	1	E25	0
E13	-	0.00	871.42	1.4	0.8	100	0	100	0	0.1	0.0	0.0	0.0	-	-	-	-	1	E25	0
E14	-	7.36	465.56	1.6	1.0	100	0	100	0	0.0	0.0	0.0	0.0	-	-	-	-	1	E25	0
P1	19x30	1023.36	174.96	10.2	8.5	0	0	0	0	0.1	0.0	0.0	-0.9	60	60	50	55	1	HE 30	-90
P2	19x30	1327.39	169.45	4.3	3.6	0	0	0	0	0.0	-0.2	0.1	0.0	60	60	50	55	1	HE 30	-90
P3	19x30	1631.80	174.96	9.4	7.8	0	0	0	0	0.1	-0.2	0.0	-0.7	60	60	50	55	1	HE 30	-90
P4	19x30	1983.40	174.96	8.8	7.2	0	0	0	0	0.0	-0.3	0.0	-0.6	60	60	50	55	1	HE 30	-90
P5	19x30	2392.04	174.96	9.7	8.1	0	0	0	0	0.4	0.0	0.0	-0.6	60	60	50	55	1	HE 30	-90
P6	19x30	2392.04	465.56	6.3	5.2	0	0	0	0	0.5	0.0	0.3	0.0	60	60	50	55	1	HE 30	-90
P7	19x30	1983.05	465.56	4.7	3.8	0	0	0	0	0.0	-0.5	0.2	0.0	60	60	50	55	1	HE 30	-90
P8	19x30	2386.54	761.94	7.9	6.8	0	0	0	0	0.6	0.0	0.3	0.0	60	60	50	55	1	HE 30	-90
P9	19x30	1983.05	756.44	7.3	6.1	0	0	0	0	0.0	-0.4	0.5	0.0	60	60	50	55	1	HE 30	-90
P10	19x30	1631.80	756.44	7.7	6.4	0	0	0	0	0.1	-0.2	0.6	0.0	60	60	50	55	1	HE 30	-90
P11	19x30	1327.58	761.94	3.9	3.3	0	0	0	0	0.0	-0.2	0.0	0.0	60	60	50	55	1	HE 30	-90
P12	19x30	1023.36	756.44	8.3	7.0	0	0	0	0	0.1	0.0	0.7	0.0	60	60	50	55	1	HE 30	-90
P13	19x30	706.44	761.94	4.4	3.6	0	0	0	0	0.0	-0.2	0.0	0.0	60	60	50	55	1	HE 30	-90
P14	19x30	389.20	756.44	6.9	5.8	0	0	0	0	0.1	0.0	0.5	0.0	60	60	50	55	1	HE 30	-90
P15	19x30	109.47	756.44	5.5	4.7	0	0	0	0	0.0	-0.3	0.3	0.0	60	60	50	55	1	HE 30	-90
P16	19x30	109.47	465.56	4.2	3.6	0	0	0	0	0.0	-0.4	0.2	0.0	60	60	50	55	1	HE 30	-90
P17	19x30	389.61	465.56	6.2	4.9	0	0	0	0	0.4	0.0	0.3	0.0	60	60	50	55	1	HE 30	-90
P22	19x30	706.44	169.45	4.9	4.0	0	0	0	0	0.1	0.0	0.1	0.0	60	60	50	55	1	HE 30	-90
P23	19x30	389.20	174.96	8.3	6.9	0	0	0	0	0.2	0.0	0.0	-0.6	60	60	50	55	1	HE 30	-90
P24	19x30	109.47	174.96	7.1	6.0	0	0	0	0	0.0	-0.3	0.0	-0.3	60	60	50	55	1	HE 30	-90
P25	19x30	1631.80	465.56	5.9	4.7	0	0	0	0	0.1	0.0	0.3	0.0	60	60	50	55	1	HE 30	-90
P26	19x30	1023.35	465.56	7.3	5.7	0	0	0	0	0.1	0.0	0.4	0.0	60	60	50	55	1	HE 30	-90

Os esforços indicados nesta tabela são os valores máximos obtidos pela envoltória de todas as combinações definidas para as fundações. Para análises complementares, deve-se consultar o relatório de esforços na fundação, que apresenta os valores calculados para cada combinação.

Localização no eixo X	
Coordenadas (cm)	Nome
0.00	E13, E1
7.36	E14
109.47	P15, P16, P24
389.20	P23
389.61	P14, P17
512.00	E12, E2
706.44	P13, P22
1023.36	P26
1023.36	P12, P1
1024.00	E11, E3
1327.39	P2
1327.58	P11
1536.00	E10, E4
1631.80	P10, P25, P3
1983.05	P9, P7
1983.40	P4
2048.00	E9, E5
2386.54	P8
2392.04	P6, P5
2561.50	E8, E7, E6

Localização no eixo Y	
Coordenadas (cm)	Nome
871.42	E13, E12, E11, E10, E9, E8
761.94	P13, P11, P8
756.44	P15, P14, P12, P10, P9
480.56	E7
465.56	E14, P16, P17, P26, P25, P7, P6
174.96	P24, P23, P1, P3, P4, P5
169.45	P22, P2
0.00	E1, E2, E3, E4, E5, E6

construção e projeto:

REV. DESCRIÇÃO RESPONSÁVEL DATA

SÃO PAULO GOVERNO DO ESTADO
Secretaria de Saúde

GRUPO TÉCNICO DE EDIFICAÇÕES

PROJETO EXECUTIVO DE ESTRUTURA

H-016 01/10

Av. Dr. Enéas Carvalho de Aguiar, nº.188, 3º andar
São Paulo-SP Cep 05403-000
Tel. (11)3066 8420 Fax (11)3066 8482

Eng. YUKIO KITAMURA
Arq. CÂMLLO CHINGOTTE