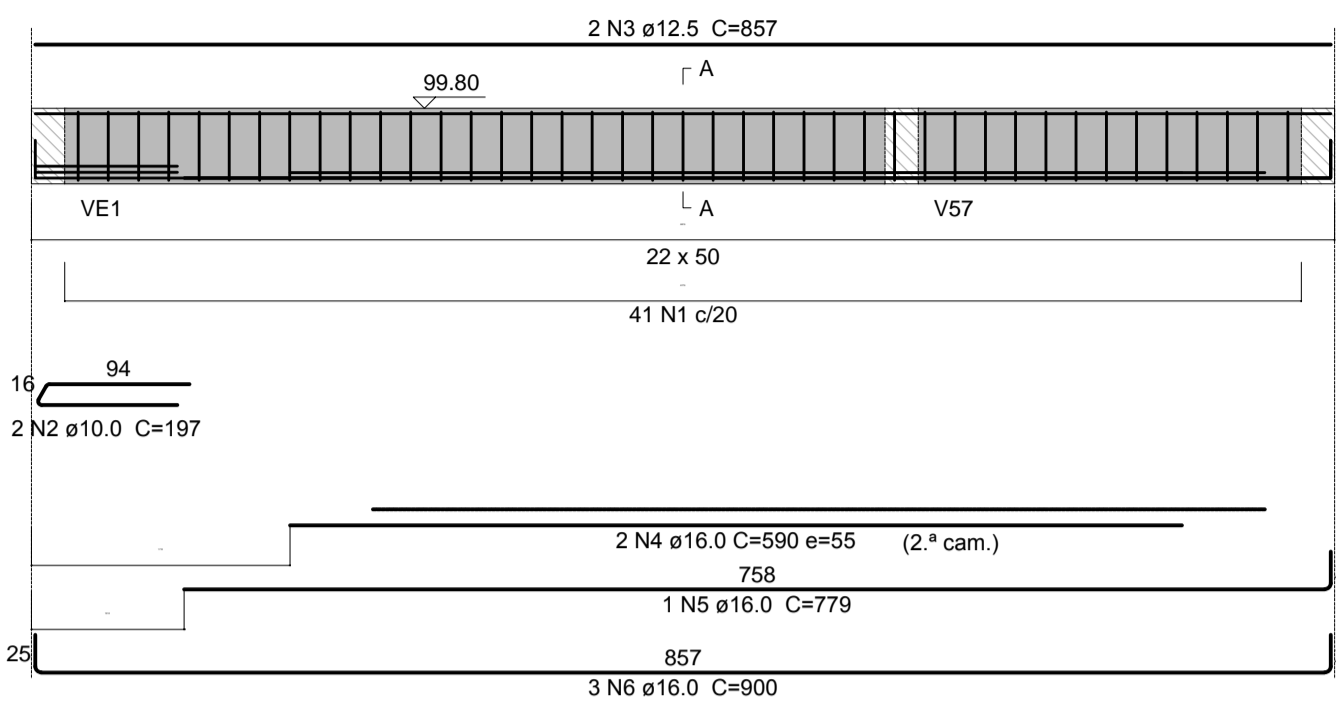
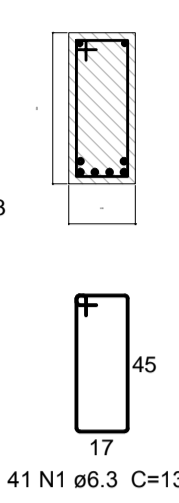


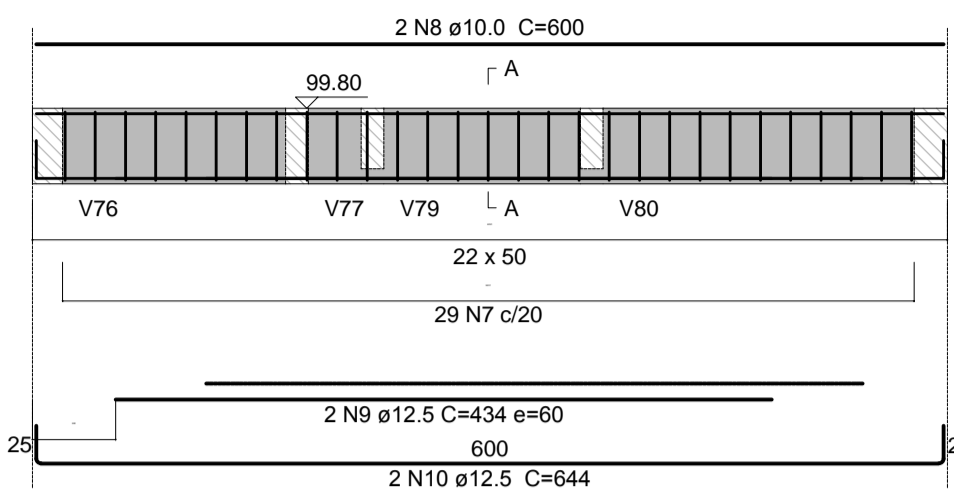
V40 (22 x 50)
ESC 1:50



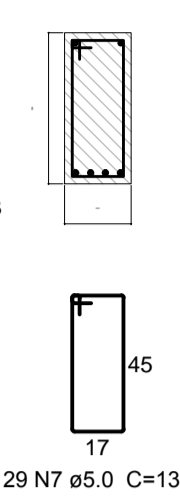
SEÇÃO A-A
ESC 1:25



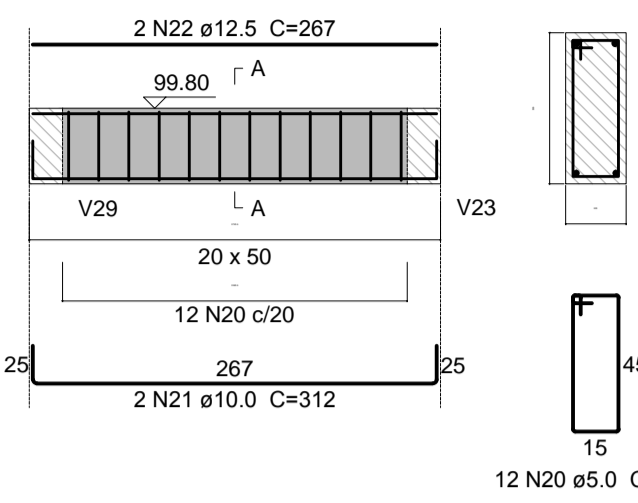
V41 (22 x 50)
ESC 1:50



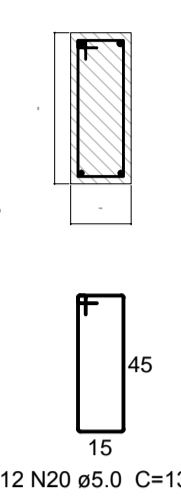
SEÇÃO A-A
ESC 1:25



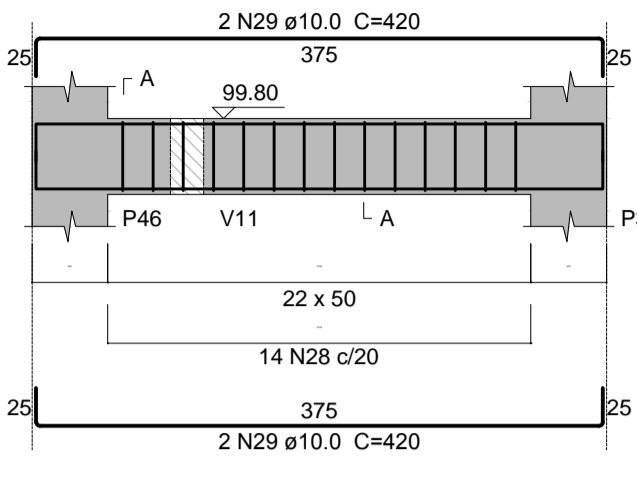
V44 (20 x 50)
ESC 1:50



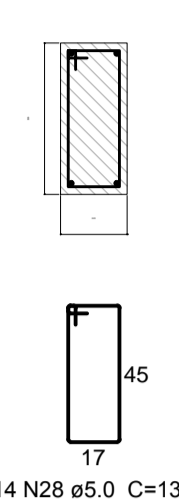
SEÇÃO A-A
ESC 1:25



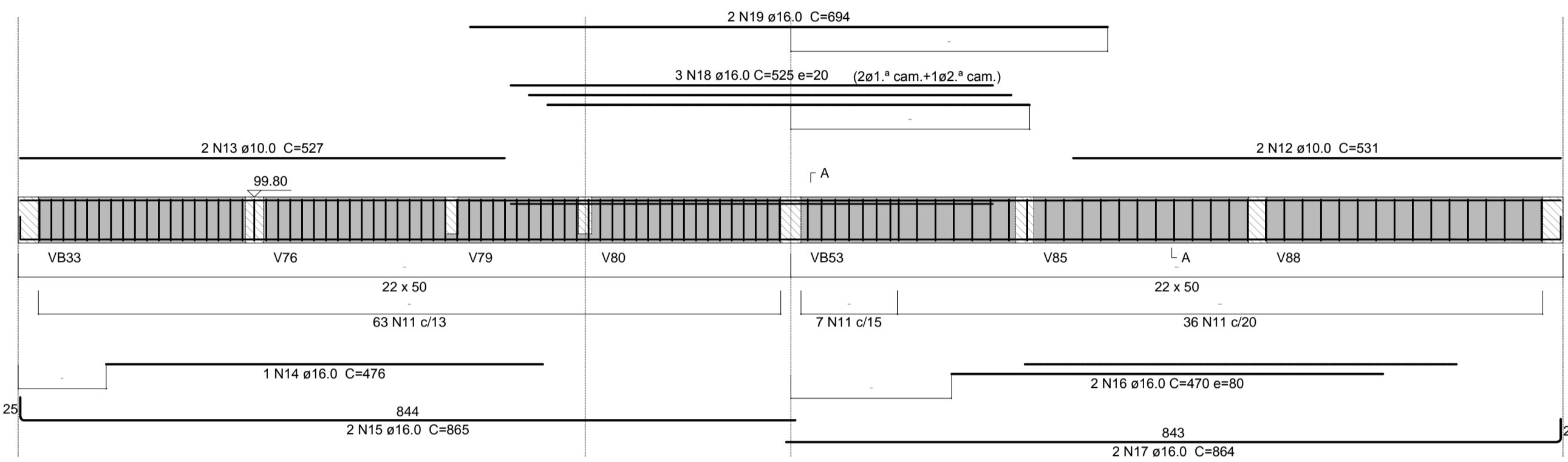
V46 (22 x 50)
ESC 1:50



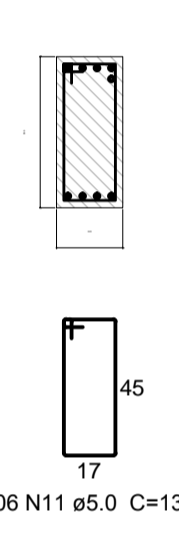
SEÇÃO A-A
ESC 1:25



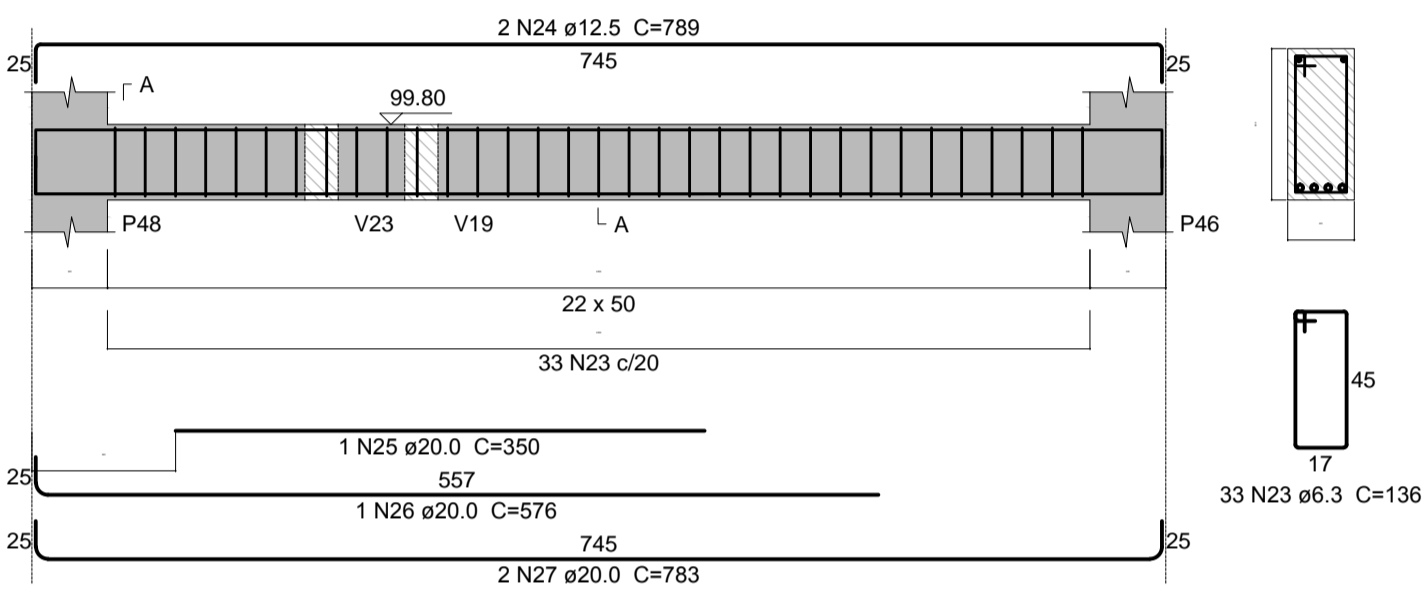
V43 (22 x 50)
ESC 1:50



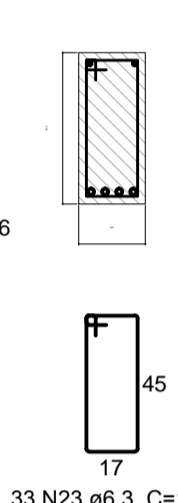
SEÇÃO A-A
ESC 1:25



V45 (22 x 50)
ESC 1:50



SEÇÃO A-A
ESC 1:25



Relação do aço

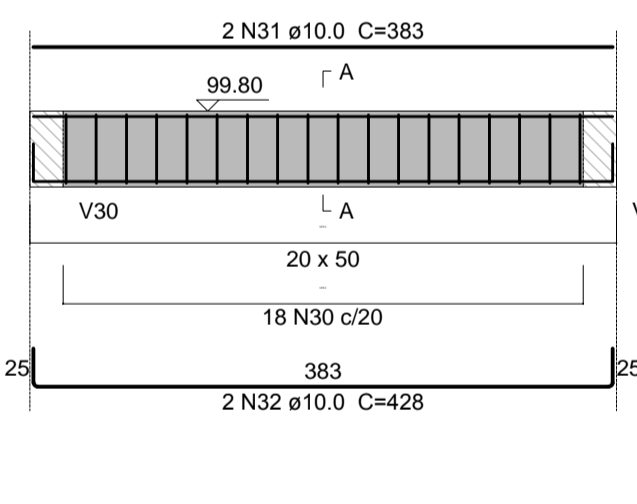
| ELEMENTO | AÇO | N | DIAM (mm) | QUANT | C.UNIT (cm) | C.TOTAL (cm) |
|----------|------|------|-----------|-------|-------------|--------------|
| V40 | CA50 | 1 | 6.3 | 41 | 136 | 5576 |
| | CA50 | 2 | 10.0 | 2 | 197 | 394 |
| | CA50 | 3 | 12.5 | 2 | 857 | 1714 |
| | CA50 | 4 | 16.0 | 2 | 590 | 1180 |
| | CA50 | 5 | 16.0 | 1 | 779 | 779 |
| V41 | CA60 | 7 | 5.0 | 29 | 136 | 3944 |
| | CA50 | 8 | 10.0 | 2 | 600 | 1200 |
| | CA50 | 9 | 12.5 | 2 | 434 | 868 |
| V43 | CA50 | 10 | 12.5 | 2 | 644 | 1288 |
| | CA60 | 11 | 5.0 | 106 | 136 | 14416 |
| | CA50 | 12 | 10.0 | 2 | 531 | 1062 |
| | CA50 | 13 | 10.0 | 2 | 527 | 1054 |
| | CA50 | 14 | 16.0 | 1 | 476 | 476 |
| | CA50 | 15 | 16.0 | 2 | 865 | 1730 |
| | CA50 | 16 | 16.0 | 2 | 470 | 940 |
| V44 | CA50 | 17 | 16.0 | 2 | 864 | 1728 |
| | CA50 | 18 | 16.0 | 3 | 525 | 1575 |
| | CA50 | 19 | 16.0 | 2 | 694 | 1388 |
| | CA60 | 20 | 5.0 | 12 | 132 | 1584 |
| | CA50 | 21 | 10.0 | 2 | 312 | 624 |
| | CA50 | 22 | 12.5 | 2 | 267 | 534 |
| | CA50 | 23 | 6.3 | 33 | 136 | 4488 |
| V45 | CA50 | 24 | 12.5 | 2 | 789 | 1578 |
| | CA50 | 25 | 20.0 | 1 | 350 | 350 |
| | CA50 | 26 | 20.0 | 1 | 576 | 576 |
| | CA50 | 27 | 20.0 | 2 | 783 | 1566 |
| | V46 | CA60 | 28 | 5.0 | 14 | 136 |
| CA50 | | 29 | 10.0 | 4 | 420 | 1680 |
| V47 | CA60 | 30 | 5.0 | 18 | 132 | 2376 |
| | CA50 | 31 | 10.0 | 2 | 383 | 766 |
| V48 | CA50 | 32 | 10.0 | 2 | 428 | 856 |
| | CA60 | 33 | 5.0 | 15 | 132 | 1980 |
| | CA50 | 34 | 10.0 | 2 | 313 | 626 |
| V49 | CA50 | 35 | 10.0 | 2 | 358 | 716 |
| | CA50 | 36 | 6.3 | 51 | 130 | 6630 |
| | CA50 | 37 | 16.0 | 1 | 798 | 798 |
| | CA50 | 38 | 16.0 | 2 | 1008 | 2016 |
| | CA50 | 39 | 20.0 | 1 | 600 | 600 |
| | CA50 | 40 | 20.0 | 1 | 847 | 847 |
| V50 | CA50 | 41 | 20.0 | 1 | 922 | 922 |
| | CA50 | 42 | 20.0 | 2 | 1003 | 2006 |
| | CA50 | 43 | 6.3 | 45 | 136 | 6120 |
| | CA50 | 44 | 20.0 | 2 | 708 | 1416 |
| | CA50 | 45 | 20.0 | 3 | 630 | 1890 |
| V51 | CA50 | 46 | 20.0 | 6 | 843 | 5058 |
| | CA60 | 47 | 5.0 | 15 | 132 | 1980 |
| V52 | CA50 | 48 | 12.5 | 4 | 420 | 1680 |
| | CA60 | 49 | 5.0 | 11 | 112 | 1232 |
| | CA50 | 50 | 10.0 | 2 | 242 | 484 |
| V54 | CA50 | 51 | 10.0 | 2 | 287 | 574 |
| | CA60 | 52 | 5.0 | 17 | 132 | 2244 |
| V55 | CA50 | 53 | 10.0 | 2 | 377 | 754 |
| | CA50 | 54 | 10.0 | 2 | 422 | 844 |

Resumo do aço

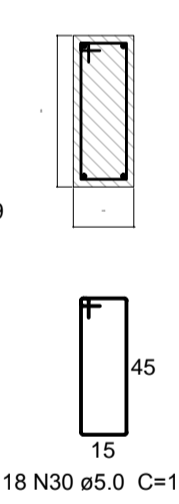
| AÇO | DIAM (mm) | C.TOTAL (m) | QUANT + 5% (Barras) | UNIT | PESO + 5% (kg) |
|-----------------|-----------|-------------|---------------------|------|----------------|
| CA50 | 6.3 | 228.2 | 20 | 12 m | 59 |
| | 10.0 | 116.4 | 11 | 12 m | 75 |
| | 12.5 | 76.7 | 7 | 12 m | 78 |
| | 16.0 | 153.1 | 14 | 12 m | 254 |
| | 20.0 | 152.4 | 14 | 12 m | 394 |
| CA60 | 5.0 | 316.6 | 28 | 12 m | 51 |
| PESO TOTAL (kg) | | | | | |
| CA50 | 860 | | | | |
| CA60 | 51 | | | | |

Volume de concreto (C-25) = 8.46 m³
Área de forma = 96.99 m²

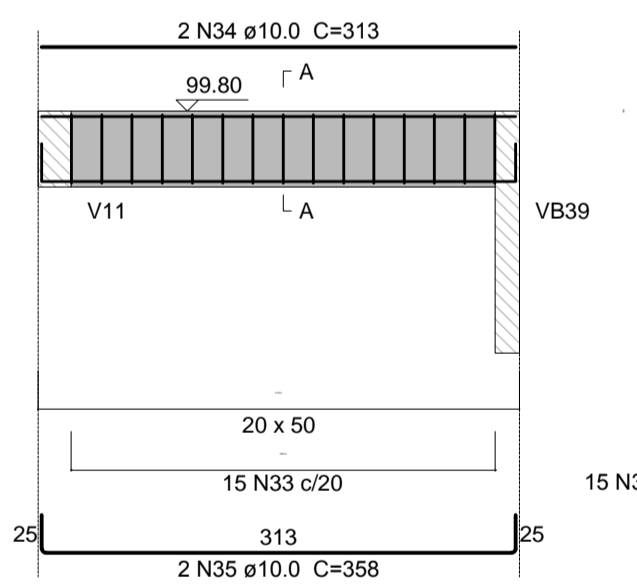
V47 (20 x 50)
ESC 1:50



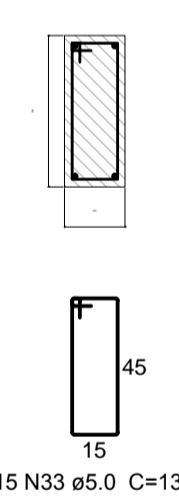
SEÇÃO A-A
ESC 1:25



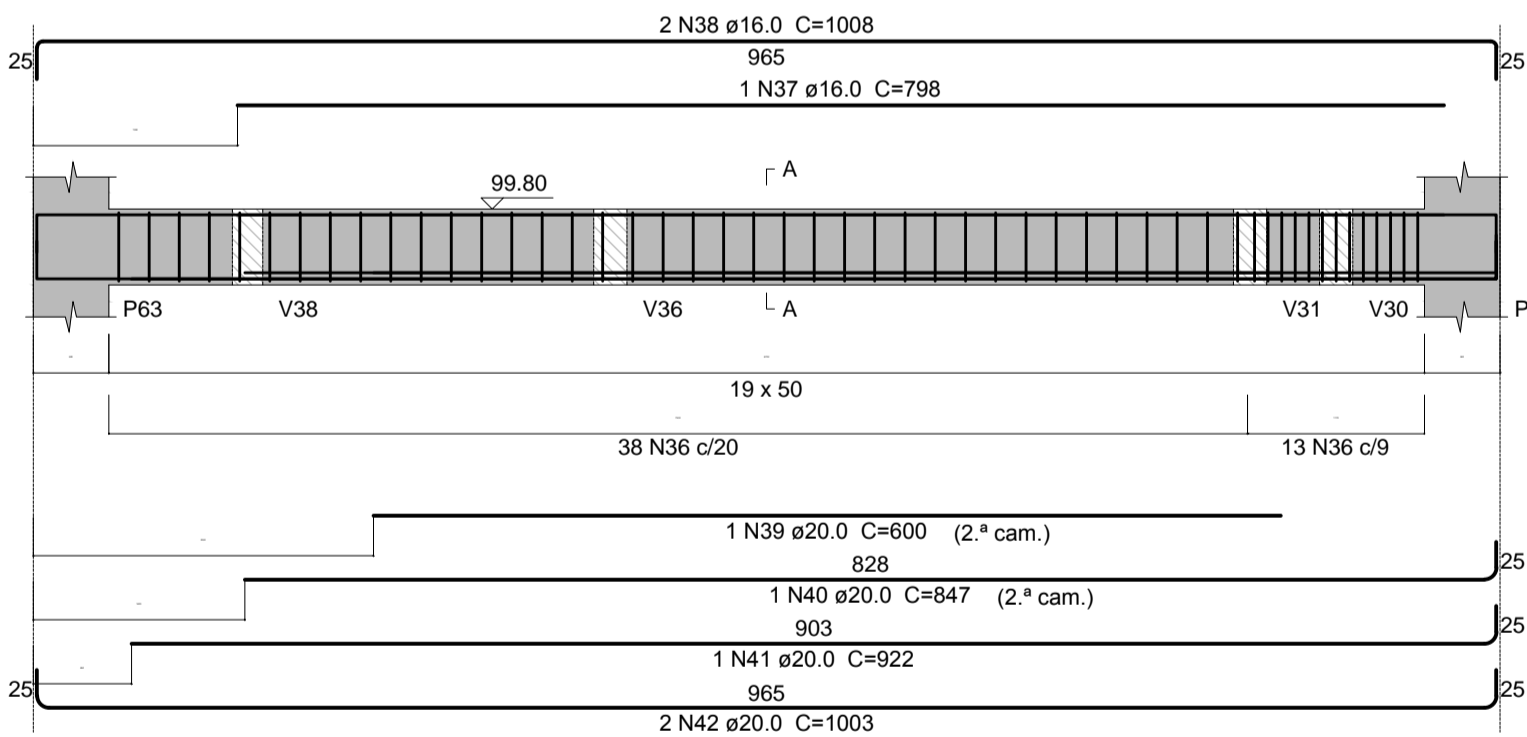
V48 (20 x 50)
ESC 1:50



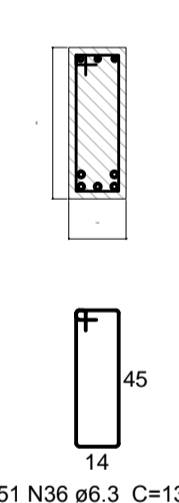
SEÇÃO A-A
ESC 1:25



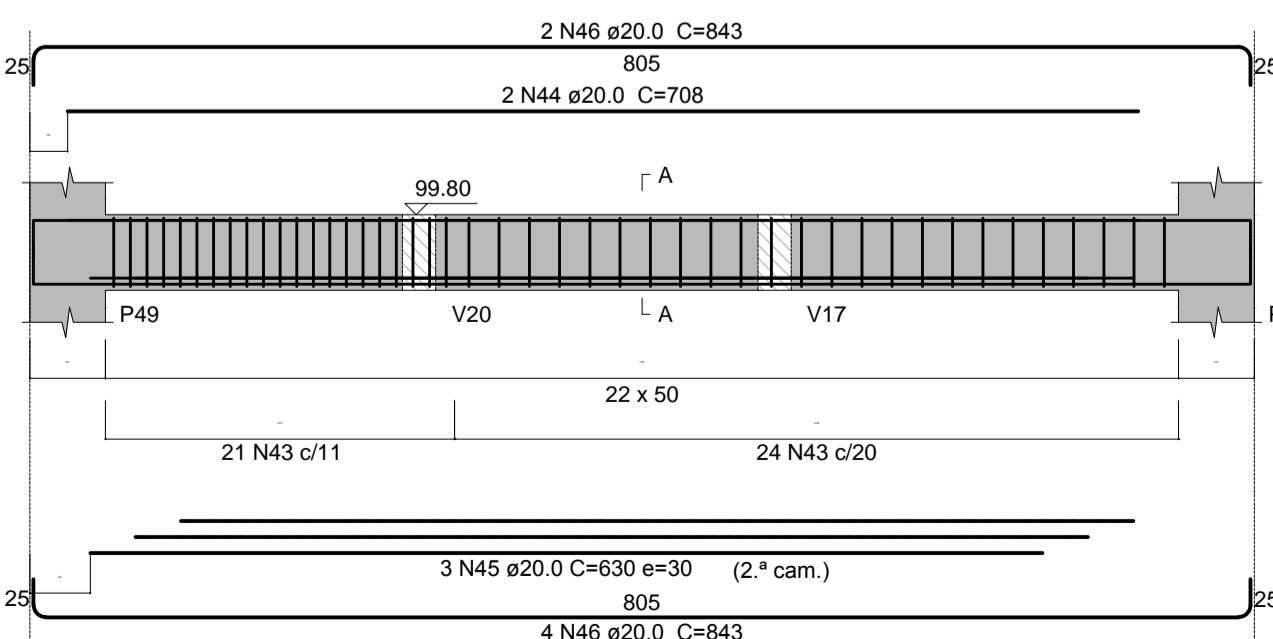
V49 (19 x 50)
ESC 1:50



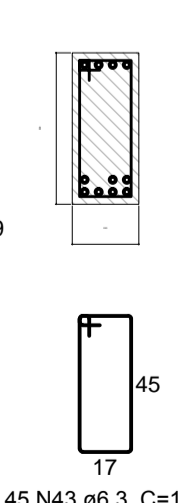
SEÇÃO A-A
ESC 1:25



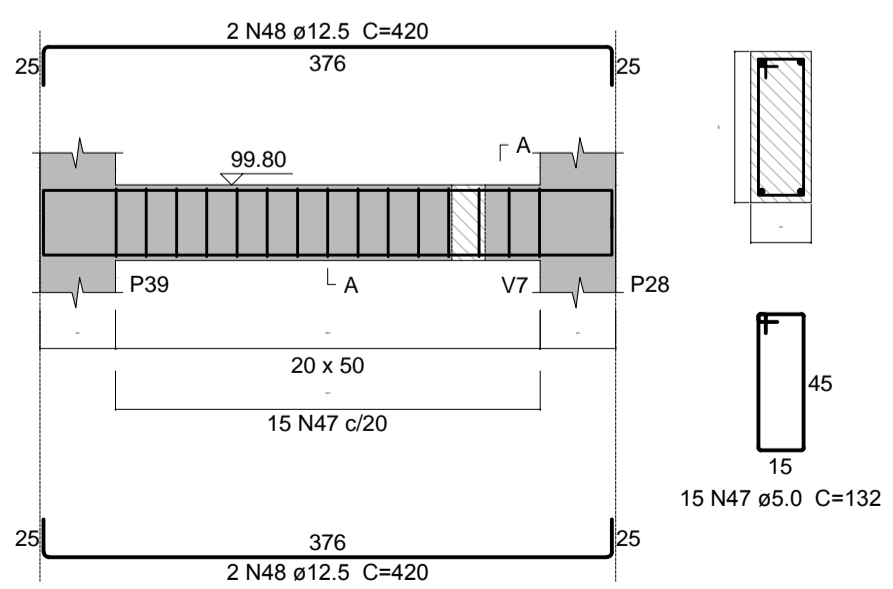
V50 (22 x 50)
ESC 1:50



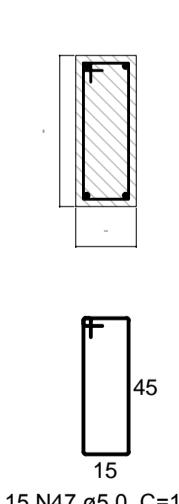
SEÇÃO A-A
ESC 1:25



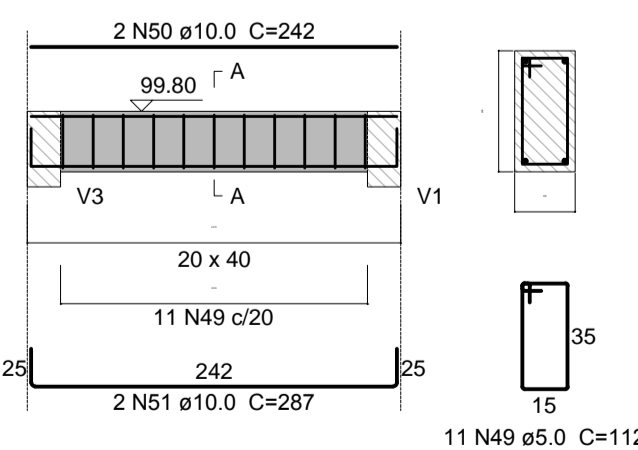
V51 (20 x 50)
ESC 1:50



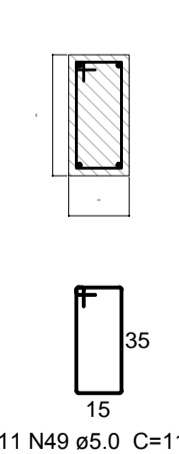
SEÇÃO A-A
ESC 1:25



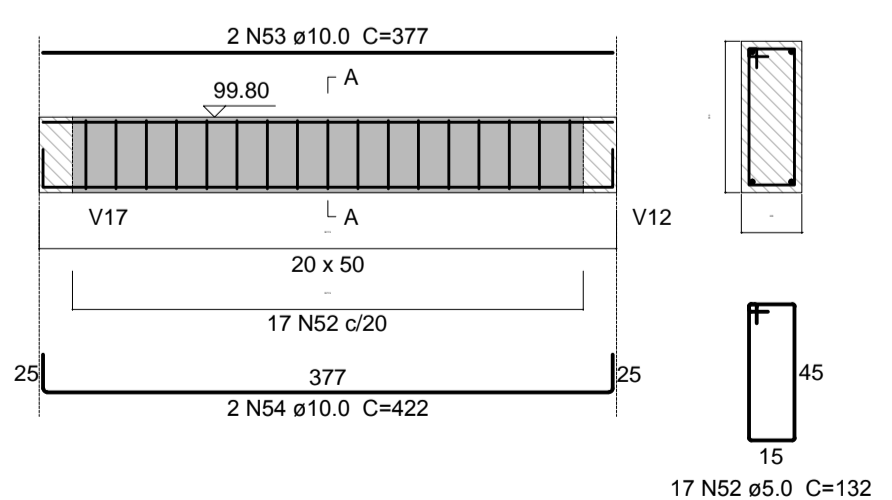
V52 (20 x 40)
ESC 1:50



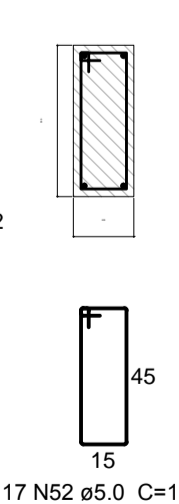
SEÇÃO A-A
ESC 1:25



V54 (20 x 50)
ESC 1:50



SEÇÃO A-A
ESC 1:25



00 EMISSÃO INICIAL
REV. DESCRIÇÃO
RESPONSÁVEL DATA

Secretaria de Estado da Saúde
GOVERNO DO ESTADO
SÃO PAULO

UNIDADE
HOSPITAL REGIONAL DR. LEOPOLDO BEVILACQUA
RUA DOS EXPEDICIONÁRIOS, 140 - PARIQUERA-AÇU - SP
BLOCO PRINCIPAL
ARMAÇÃO DAS VIGAS BALDRAMES - 4 / 7

PROJETO DE ESTRUTURAS
FOLHA
H-040
EST-05 00
REVISÃO
DATA
JAN/2018

Av. Dr. Enéas Carvalho de Aguiar, nº188, 3º andar
São Paulo-SP Cep 05403-000
Tel. (11)3066-8420 Fax (11)3066-8482

DIRETOR DO S.T.E.
Arg. ADHEMAR DIZIOLI FERNANDES
AUTORIZADO:
Arg. CAMILO CHINGOTTE

COORDENADOR DE PROJETOS
Arg. M. CRISTINA GOMES JOTTEN

TODOS OS DIREITOS RESERVADOS. PROIBIDA TODA A REPRODUÇÃO OU ALTERAÇÃO SEM PRÉVIA AUTORIZAÇÃO.